

Conduit Locknuts & Fixture Nuts

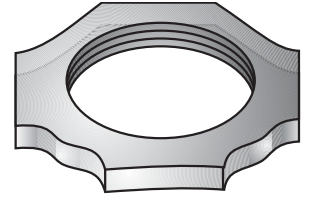
Threaded For Rigid Conduit & IMC

Type 1-38LOS

Oversize Locknut $\frac{3}{8}$ " covers $\frac{1}{2}$ " KO

Material/Finish: Steel/Zinc Plated

Trade Size (inches)	Catalog Number	K.O. Size	Threads Per Inch	Dimensions in Inches		
				Thkns.	Dia. Across Corners	Dia. Across Flats
$\frac{3}{8}$	1-38LOS	$\frac{3}{8}$ & $\frac{1}{2}$	18	$\frac{1}{8}$	$1\frac{1}{8}$	$1\frac{1}{16}$



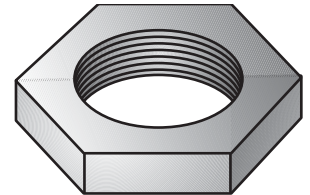
Type 1-38LOS

Type 1-18S

Fixture Nuts

Material/Finish:
Steel/Zinc Plated

Trade Size (inches)	Catalog Number	Threads Per Inch	Dimensions in Inches		
			Thkns.	Dia. Across Corners	Dia. Across Flats
$\frac{1}{8}$	1-18S	27	$\frac{1}{8}$	$\frac{5}{8}$	$\frac{9}{16}$
$\frac{1}{4}$	1-25S	18	$\frac{1}{8}$	$\frac{3}{4}$	$1\frac{1}{16}$



Type 1-18S