

# Conduit Elbows

## Type EL-9

### Female/Female

#### Use:

Provides a 90° change in direction in hazardous and ordinary locations where a short radius turn is needed.

#### Features:

- Female tapered threaded hubs (NPT) for rigid conduit and IMC.

#### Material/Finish:

Malleable Iron/Zinc Electroplated

#### Optional Finish:

Mechanical Galvanize. Add suffix "G" to standard catalog number. Contact your local representative for pricing and availability.

#### Third Party Certification:



UL Listed: 34997

1/2" - 1"

Class I, Div. 1, 2, Groups A, B, C, D

Class I, Zone 1, 2, Groups IIA, IIB, IIC

Class II, Div. 1, 2, Groups E, F, G

Class III

1 1/4" - 2"

Class I, Div. 1, 2, Groups C, D

Class I, Zone 1, 2, Groups IIA, IIB

Class II, Div. 1, 2, Groups E, F, G

Class III

Suitable for wet locations



CSA Certified: 009795

#### Applicable Third Party Standards:

UL Standards: 514B and 886

CSA Standard: C22.2 No. 30

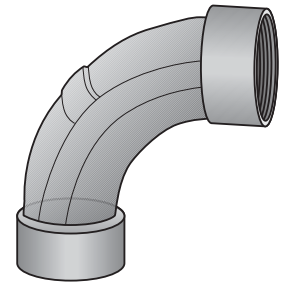
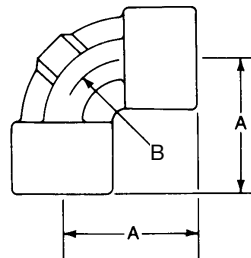
NEC Articles 500-503 & 505

Mil. Spec: Mil-F-28675

#### Suggested Specifications:

Where 90° female/female short conduit elbows are required, they shall be of malleable iron construction, UL Listed for use in wet and hazardous locations as defined in NEC articles 500 through 503 and 505. The conduit elbow fittings shall be O-Z/Gedney Type EL-9 Series.

Trade Size (inches)	Catalog Number	Dimensions in Inches	
		A	B
1/2	EL-950	1 1/2	3/4
3/4	EL-975	1 3/4	7/8
1	EL-9100	2	1 1/16
1 1/4	EL-9125	2 1/4	1 3/8
1 1/2	EL-9150	4	3
2	EL-9200	5	4



Type EL-9