

Conduit Outlet Bodies

For Rigid Conduit & IMC

Type OE

Use:

To provide access for pulling conductors, and change in direction in conduit runs. Compact design allows use in areas with limited space. Provide future access for maintenance and wiring changes.

Features:

- Compact design
- Precision ground flange
- Blind drilled and tapped screw holes
- Smooth integral hub bushings
- Threaded (NPT) for rigid conduit or IMC
- Five different hub configurations

Material/Finish:

Gray Iron/Zinc Electroplated with aluminum enamel

Third Party Certification:



UL Listed: E-30513
Class I, Div. 1, 2, Groups C, D
Class I, Zone 1, 2, Groups IIA, IIB
Class II, Div. 1, 2, Groups E, F, G
Class III



CSA Certified: 009795

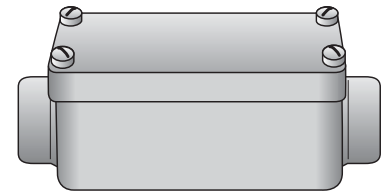
Applicable Third Party Standards:

UL Standard: 886
CSA Standard: C22.2 No.30
NEC Articles 500-503 & 505
Mil. Spec: Mil-F-28675
Fed. Spec: A-A-50563

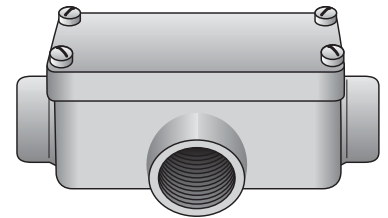
Dimensional Data:

See Page BA33

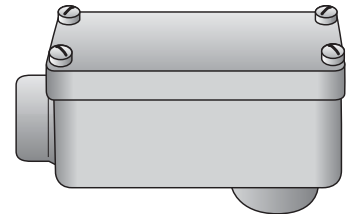
Hub Size	Catalog Number
½ ¾	OEC-50 OEC-75
½ ¾	OET-50 OET-75
½ ¾	OELB-50 OELB-75
½ ¾	OELL-50 OELL-75
½ ¾	OELR-50 OELR-75



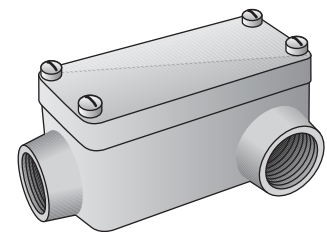
Type OEC



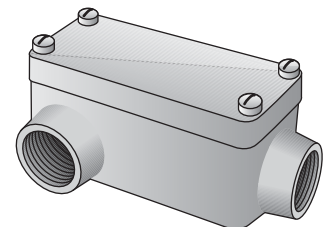
Type OET



Type OELB



Type OELL

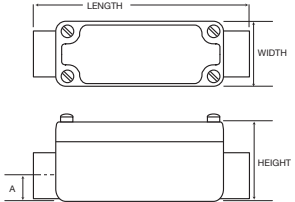


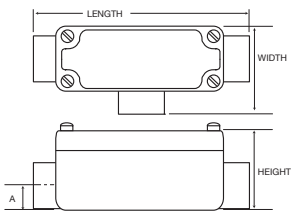
Type OELR

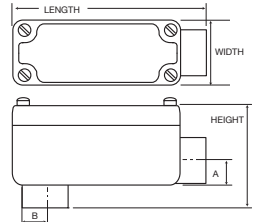
Conduit Outlet Bodies

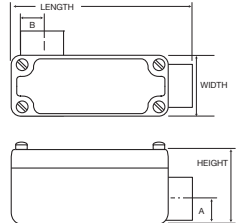
For Rigid Conduit & IMC

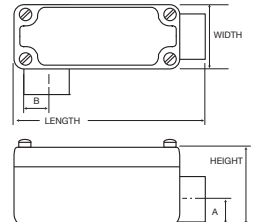
Dimension Data:

Type OEC		Dimensions in Inches						Vol. Cu. In.
		Catalog Number	Hub Size	Length	Width	Height	A	
		OEC-50	1/2	5 3/8	1 3/8	1 15/16	1 1/16	4.8
		OEC-75	3/4	5 1/2	2	2 3/16	1 3/16	7.5

Type OET		Dimensions in Inches						Vol. Cu. In.
		Catalog Number	Hub Size	Length	Width	Height	A	
		OET-50	1/2	5 3/8	2 3/8	1 15/16	1 1/16	4.8
		OET-75	3/4	5 1/2	2 3/16	2 3/16	1 3/16	7.5

Type OELB		Dimensions in Inches							Vol. Cu. In.
		Catalog Number	Hub Size	Length	Width	Height	A	B	
		OELB-50	1/2	4 3/4	1 5/8	2 11/16	1 1/16	7/8	4.8
		OELB-75	3/4	4 15/16	2	2 3/16	1 3/16	1 5/16	7.5

Type OELL		Dimensions in Inches							Vol. Cu. In.
		Catalog Number	Hub Size	Length	Width	Height	A	B	
		OELL-50	1/2	4 3/4	2 3/8	2 11/16	1 1/16	7/8	4.8
		OELL-75	3/4	4 15/16	2 13/16	2 13/16	1 3/16	1 5/16	7.5

Type OELR		Dimensions in Inches							Vol. Cu. In.
		Catalog Number	Hub Size	Length	Width	Height	A	B	
		OELR-50	1/2	4 3/4	1 3/8	2 11/16	1 1/16	7/8	4.8
		OELR-75	3/4	4 15/16	2 13/16	2 13/16	1 3/16	1 5/16	7.5