

# Spec 5™ Conduit Body, Cover & Gasket Assemblies

For Rigid Conduit & IMC

## Types LB, LL, LR, C, T

**Use:**

To provide access to conductors for pulling, splicing, maintenance and future changes/ upgrades. Allows connection of straight conduit runs, branch conduit runs and 90° bends.


**Features:**


- Tapered threaded hubs (NPT)
- Packaged complete under one Catalog Number
- Ready to use

**Material/Finish:**

Conduit body - Malleable Iron  
Zinc Electroplated with Aluminum Enamel  
Cover - Type BS Steel Zinc Electroplated  
Gasket - Type SGN Neoprene

**Third Party Certification:**

 UL Listed:  
E-18095  
Suitable for wet locations

 CSA Certified:  
LR-9795  
Suitable for wet locations.

**Applicable Third Party Standards:**

UL Standard: 514A  
CSA Standard: C22.2 No. 18  
Fed Spec: A-A-50563  
NEMA: FB-1, FB-2.10

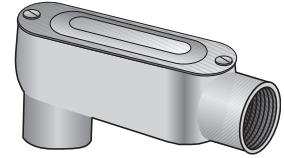
**Dimensional Data:**

See Pages AB6 - AB8.

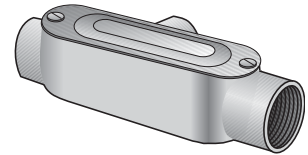
**Note:** For additional information, please refer to:

- Conduit Bodies on pages AB1 and AB2.
- Covers and Gaskets on page AB4.

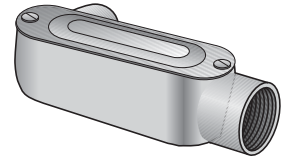
Trade Size (inches)	Catalog Number
1/2	LB-50CG
3/4	LB-75CG
1	LB-100CG
1 1/4	LB-125CG
1 1/2	LB-150CG
2	LB-200CG
1/2	T-50CG
3/4	T-75CG
1	T-100CG
1 1/4	T-125CG
1 1/2	T-150CG
2	T-200CG
1/2	LL-50CG
3/4	LL-75CG
1	LL-100CG
1 1/4	LL-125CG
1 1/2	LL-150CG
2	LL-200CG
1/2	LR-50CG
3/4	LR-75CG
1	LR-100CG
1 1/4	LR-125CG
1 1/2	LR-150CG
2	LR-200CG
1/2	C-50CG
3/4	C-75CG
1	C-100CG
1 1/4	C-125CG
1 1/2	C-150CG
2	C-200CG



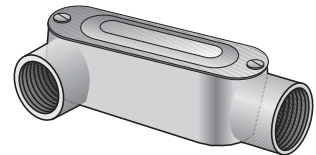
Type LB-CG



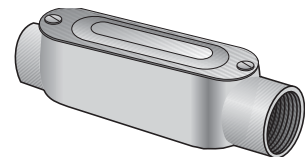
Type T-CG



Type LL-CG



Type LR-CG



Type C-CG