

Conduit Elbows

Type 8 Series

90° Short Conduit Elbow

45° Short Conduit Elbow

Use:

Provides a 90° or 45° change in direction in hazardous and ordinary locations where a short radius turn is needed.

Features:

- Threaded for rigid conduit and IMC
- Female - NPT
- Male - NPT
- Available with insulated throat

Material/Finish:

Malleable Iron/Zinc Electroplated

Optional Finish:

Mechanical Galvanize. Add suffix "G" to standard catalog number. Contact your local representative for pricing and availability.

Third Party Certification:



UL Listed: E-34997

Suitable for hazardous locations as follows:

1/2" - 1":

Class I, Div. 1, 2, Groups A, B, C, D
Class I, Zone 1, 2, Groups IIA, IIB, IIC
Class II, Div. 1, 2, Groups E, F, G
Class III

1 1/4" - 2":

Class I, Div. 1, 2, Groups C, D
Class I, Zone 1, 2, Groups IIA, IIB
Class II, Div. 1, 2, Groups E, F, G
Class III

Suitable for wet locations



CSA Certified: 9795

Applicable Third Party Standards:

UL Standards: 514B and 886

CSA Standard: C22.2 No. 30

NEC Articles 500-503 & 505

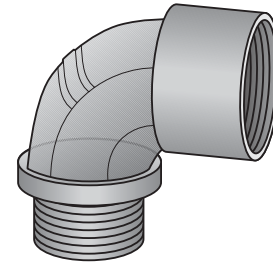
Mil. Spec: Mil-F-28675

Suggested Specifications:

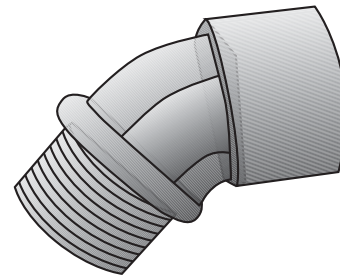
Where 90° male/female short conduit elbows are required, they shall be of malleable iron construction, UL Listed for use in wet and hazardous locations as defined in NEC articles 500 through 503 and 505. The conduit elbow fittings shall be O-Z/Gedney Type 8 Series.

Trade Size (inches)	90° Catalog Number	Insulated Throat Catalog Number	Dim. in Inches	
			A	B
1/2	8-50	8-50T	1 1/16	9/16
3/4	8-75	8-75T	1 1/8	5/8
1	8-100	8-100T	1 1/8	1 1/16
1 1/4	8-125	8-125T	2 1/4	3/4
1 1/2	8-150	8-150T	2 1/2	3/4
2	8-200	8-200T	3	3/4

Trade Size (inches)	45° Catalog Number	Insulated Throat Catalog Number	Dim. in Inches	
			A	B
1/2	8-450	8-450T	1 1/16	1/2
3/4	8-475	8-475T	1 1/8	9/16
1	8-4100	8-4100T	1 1/8	5/8
1 1/4	8-4125	8-4125T	1 3/4	5/8
1 1/2	8-4150	8-4150T	1 7/8	5/8
2	8-4200	8-4200T	2 1/4	1 1/16



Type 8 Series 90° Short



Type 8 Series 45° Short

