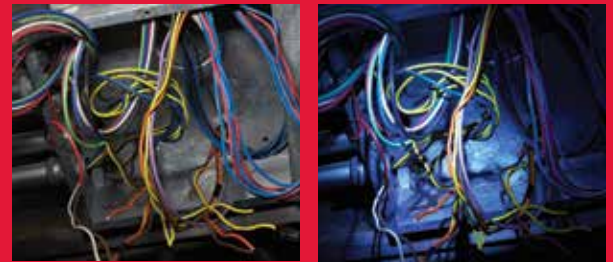


TRUEVIEW™

HIGH DEFINITION LIGHTING

BEST-IN-CLASS LIGHT QUALITY

- True representation of colour and detail
- Optimized colour temperature for workspaces
- Even beam pattern for reduced glare and shadows



TRUEVIEW™ **Other LED**

Each light within the Milwaukee® lighting family is made with the user in mind. Light quality is always important, especially on the jobsite where safety and accuracy rely on the ability to see in true colour and detail. The technology behind Milwaukee®'s TRUEVIEW™ High-Definition Lighting offers our users a higher level of visual accuracy, comfort and clarity. With high light quality that represents sunlight, even beam patterns for reduced glare and the ability to see accurate representations of colour and detail, Milwaukee®'s TRUEVIEW™ lighting family offers our users the best in a lighting solution: the ability to work in high definition.



NEW
MILWAUKEE®
LIGHTING SOLUTIONS

M12™ Lantern/Flood Light

2362-20

Specifications:

Light Type	LED
Lumens (4 Settings)	400 / 200 / 40 / Strobe
Hands Free	2 Hook Design Works as Handle and Hook
Beam Distance	23m
Length	11-5/8"
Weight	1.0 lbs



Battery and Charger Sold Separately



M12™ LED Stick Light

2351-20

Specifications:

Light Type	LED
Lumens	220
Hands-Free	Multi-Position Stainless Steel Hook
Length	9-1/4"
Weight	0.6 lbs



Battery and Charger Sold Separately

Related Accessory:
49-24-2351 – M12™ Stick Light Magnet
Compatible with Milwaukee® M12™ LED Stick Light (2351-20).
Holds light to metal surfaces for hands-free use.



M12™ LED Work Light

49-24-0146

Specifications:

Light Type	LED
Lumens	86
Hands-Free	Integrated Magnet
Head Rotation	90°



Battery and Charger Sold Separately

REDLITHIUM™ 2.0/XC4.0

- Up to 2X More Run-Time
- Up to 20% More Power
- Over 2X More Recharges

M12™ REDLITHIUM™ 2.0 Compact Battery Pack

48-11-2420

Specifications:

Amp Hours	2.0
Cell Chemistry	LITHIUM-ION



M12™ REDLITHIUM™ XC4.0 Extended Capacity Battery Pack

48-11-2440

Specifications:

Amp Hours	4.0
Cell Chemistry	LITHIUM-ION



REDLITHIUM™ RUN-TIME ADVANTAGE

REDLITHIUM™ XC4.0				
REDLITHIUM™ XC				
Standard High Capacity LITHIUM-ION				
REDLITHIUM™ 2.0				
REDLITHIUM™				
Standard Compact LITHIUM-ION				

M12™ REDLITHIUM™ Compact Battery Pack

48-11-2401

Specifications:

Amp Hours	1.5
Cell Chemistry	LITHIUM-ION
Charge Time	30 minutes



2-Pack Available

48-11-2411



M12™ REDLITHIUM™ XC Extended Capacity Battery Pack

48-11-2402

Specifications:

Amp Hours	3.0
Cell Chemistry	LITHIUM-ION
Charge Time	60 minutes



2-Pack Available

48-11-2412



M12™ Jobsite Radio

2590-20

Specifications:

Tuner	Digital Reception with Signal Processor
Modes	AM / FM / AUX
Weight	3.5 lbs
Auxiliary Input	1/8" Stereo Jack
Powered By	All M12™ Batteries / AC Adapter



Battery and Charger Sold Separately

Includes: (1) Auxiliary Input Cord, (1) AC Adapter, (2) AAA Batteries (for memory backup)

M12™ Jobsite Speaker

2592-20

Specifications:

Pairing	Bluetooth pairing upto 30ft away
2.1 Amp USB Port	Universal Charging for Smartphones, Tablets and Other Portable Electronic Devices
Weight	1.6 lbs
Auxiliary Input	1/8" Stereo Jack
Powered By	All M12™ Batteries



Batteries Sold Separately

Powers all Milwaukee® M12™ Heated Gear

M12™ Power Source

49-24-2310

Specifications:

On-Board Fuel Gauge	Yes
Powered By	All M12™ Batteries
2.1 Amp USB Port	Universal Charging for Smartphones, Tablets and Other Portable Electronic Devices



Batteries Sold Separately

Powers all Milwaukee® M12™ Heated Gear

M12™ LITHIUM-ION Battery Charger*

48-59-2401

Specifications:

Compatibility	All M12™ Batteries
Integrated Hang-Holes	Yes
On-Board Indicator Light	Yes
Cell Voltage Monitoring	Yes



M12™ AC/DC Wall & Vehicle Charger

2510-20

Specifications:

Compatibility	All M12™ Batteries
Integrated Hang-Holes	Yes
On-Board Indicator Light	Yes
Cell Voltage Monitoring	Yes



M12™ and M18™ Multi-Voltage Charger

48-59-1812

Specifications:

Compatibility	All M12™ and M18™ Batteries
Charge Sequence	Sequential (First In, First Charged)
Integrated Hang-Holes	Yes
On-Board Indicator Light	Yes
Cell Voltage Monitoring	Yes



Batteries Sold Separately