



Shell End Mill Arbors with NST/NMTB Shank

- Made of alloy forged steel for a long durable service life
- Hardened to RC 56-60 and ground to ensure maximum accuracy
- Shell end mill pilot T.I.R. <0.0004"
- Each set is provided with a wooden case

- Draw bar threads:
 NST/NMTB 30 1/2" - 13
 NST/NMTB 40 5/8" - 11
 NST/NMTB 50 1" - 8

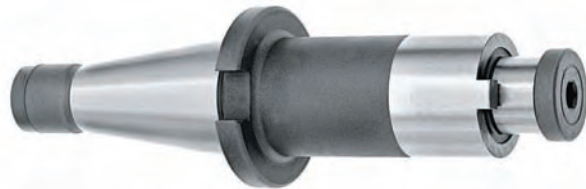
NST/NMTB Shank	Part Number	Arbor Dia	Gage Length	Wt lbs
30	7-060-005Q	1/2	.689	0.82
	7-060-010Q	3/4		0.95
	7-060-015Q	1	.929	1.26
	7-060-020Q	1-1/4		1.32
40	7-060-030Q	3/4	.689	1.96
	7-060-035Q	1		2.25
	7-060-040Q	1-1/4	.937	2.45
	7-060-045Q	1-1/2		2.76
	7-060-050Q	2		3.44
50	7-060-060Q	3/4	.752	6.1
	7-060-065Q	1		6.4
	7-060-070Q	1-1/4	1.000	6.5
	7-060-075Q	1-1/2		6.9
	7-060-080Q	2		7.4



Shell End Mill Arbors with 4" Extension

Type 7320

NST/NMTB Shank	Part Number	Arbor Dia	Wt lbs
40	7-075-002Q	3/4	3.5
	7-075-005Q	1	3.9
50	7-075-010Q	1	8.6
	7-075-015Q	1-1/4	10.6
	7-075-020Q	1-1/2	13.5



- Draw bar threads:
 NST/NMTB 40 5/8" - 11
 NST/NMTB 50 1" - 8