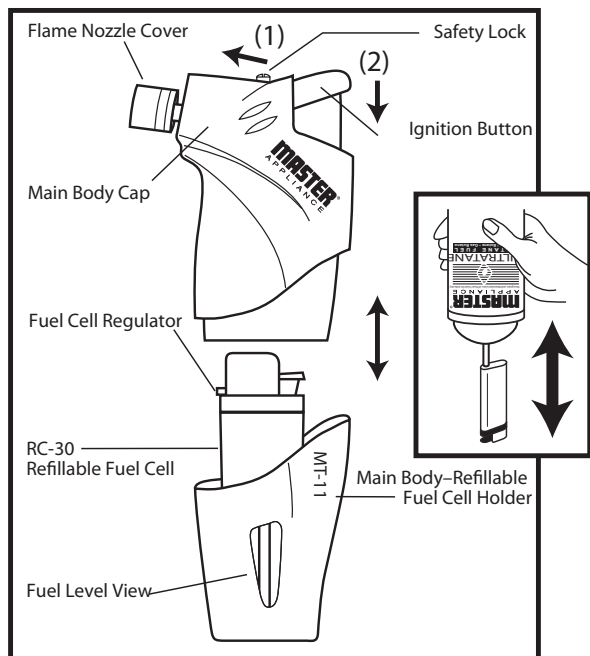


MICROTORCH MT-11

WITH "REFILLABLE" BUTANE FUEL CELL

INSTRUCTIONS



FEATURES:

- Built-in safety lock with improved easy to use self-ignition system
- Runs on Master Ultratane[®] Butane Fuel
- Flame temperature up to approximately 2500°F, 1300°C
- Wind-proof flame and water-resistant ignition
- Compact size – unit fits easily into tool kit or first aid/survival kit
- Child Resistant Ignition System
- Built-in fuel level viewing window

SAFETY & WARNINGS:

After filling fuel cell, please verify that valve has seated properly by visual inspection. Consult factory if problem exists. Read and follow instructions before using. Keep away from children. After filling: fuel cell contains gas under pressure. Do not use near open flames, heaters or combustibles. Store properly when not in use. Always make sure Microtorch is cool before removing fuel cell. Remove fuel cell before storage. Do not store fuel cell above 104°F/40°C. CAUTION: Flame appears invisible in sunlight and could cause severe injury if not used with extreme caution.

WARNING: This product, when used for soldering and similar applications, produces chemicals known to the State of California to cause cancer and birth defects or other reproductive harm.

WARNING: Department of Transportation Hazardous Materials Regulations forbid the carriage of butane or other flammable gas products on passenger aircraft. Do not pack this item or any other flammable gas item, in any checked or carry-on baggage.

Contains flammable gas under pressure. Do not use near sparks or open flame. Do not puncture or incinerate container or store at temperatures above 120°F. Keep out of reach of children.

MSDS Sheet available upon request or see our website for your convenience.

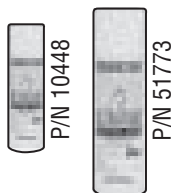
HOW TO USE THE MT-11:

Remove main body cap, then place the refillable fuel cell into the holder. Replace the body cap tightly. (Refer to diagram.) To ignite, Push Safety Lock toward Flame Nozzle. Place thumb on Ignition button and apply downward pressure. Your MT-11 is now ignited and ready to use. Note: If no flame appears, adjust the regulator on the fuel cell and activate the ignition button again. As the gas in the fuel cell is consumed, the regulator may need to be adjusted to ensure a proper flame. When the ignition button is released, there will be a short delay before the flame is completely extinguished and the Safety Lock will move to locked position. When the MT-11 is not in use, remove the fuel cell.

TO FILL/REFILL FUEL CELL:

Use only Master Ultratane[®] Butane fuel to fill fuel cell. Remove fuel cell from Microtorch or package. Hold fuel cell firmly with refill valve pointing up. Place nozzle of butane canister down onto refill valve and press butane canister down and up in short durations until fuel cell is filled. A pumping action is required when filling fuel cell. It typically requires two or three quick pumps to fill fuel cell. If you do not follow proper filling instructions, the valve may stick open, causing butane to leak.

USE ONLY MASTER ULTRATANE[®] BUTANE FUEL



MASTER APPLIANCE CORP.
 2420 - 18th Street, Racine, WI 53403 U.S.A.
 PHONE: 262-633-7791 FAX: 262-633-9745
 Visit our website www.masterappliance.com

SPECIFICATIONS:

SPECIFICATIONS:	
SIZE	1.0" (L) x 4.3" (H) x 2.5" (W) 25 mm x 110 mm x 65 mm
WEIGHT	2.1 oz / 60 g (empty)
FUEL	Butane Master Ultratane
NONSTOP RUN TIME	Approx. 20 minutes
FLAME TEMP.	Approx. 2500°F, 1300°C (blue flame)
FUEL CAPACITY	5.3 cc