

FEATURES & SPECIFICATIONS

INTENDED USE — Square straight aluminum general purpose pole for up to 35 foot mounting heights.

CONSTRUCTION — Shaft: Made from extruded 6063-T6 or 6061-T6 aluminum alloy, square tube is uniform in cross-section down length of shaft with no taper.

Hand hole: Reinforced rectangular hand hole is located 18" above base, 4" poles have 2" x 4" hand hole; 5" and 6" poles have 2.5" x 4" hand hole). Hand-hole cover plate made from aluminum alloy.

Hardware: Stainless steel

Top cap: Removable top cap provided with drill-mount poles.

Bolt covers: Nut cover discs provided. Optional cast aluminum base cover available.

FINISH — Must specify finish.

GROUNDING — Provision located inside hand hole rim. Grounding hardware is not included (provided by others).

ANCHOR BOLTS — Fabricated from carbon steel bar with minimum-yield strength of 55,000 psi. Upper portion of anchor bolt is galvanized per ASTM A-153. Each anchor bolt is furnished with two hex nuts and two flat washers.

Catalog Number
Notes
Type



Anchor Base Poles

SSA

SQUARE STRAIGHT ALUMINUM

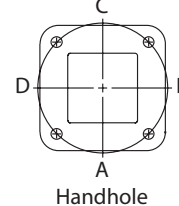
ORDERING INFORMATION Lead times will vary depending on options selected. Consult with your sales representative. **Example: SSA 20 4C DM19 BA**

SSA Series	Nominal fixture mounting height	Nominal shaft base size/wall thickness	Mounting ¹	Options	Finish ¹⁰
SSA	8 – 35 feet (See back page.)	(See back page.)	Tenon mounting PT Open top T20 2-3/8" O.D. (2" NPS) T25 2-7/8" O.D. (2-1/2" NPS) T30 3-1/2" O.D. (3" NPS) ² T35 4" O.D. (3-1/2" NPS) ² Drill mounting³ DM19 1 at 90° DM28 2 at 180° DM28PL 2 at 180° with one side plugged DM29 2 at 90° DM39 3 at 90° DM49 4 at 90° CSX/DSX/AERIS™/OMERO™ Drill mounting³ DM19AS 1 at 90° DM28AS 2 at 180° DM29AS 2 at 90° DM39AS 3 at 90° DM49AS 4 at 90° AERIS™ Suspend drill mounting^{3,4} DMxxAST_ OMERO™ Suspend drill mounting^{3,4} DMxxMRT_	Shipped installed L/AB Less anchor bolts FBC Full base cover VD Vibration damper TP Tamper proof H1-18Axx Horizontal arm bracket (1 fixture) ^{5,6} FDLxx Festoon outlet less electrical ⁵ CPL12xx 1/2" coupling ⁵ CPL34xx 3/4" coupling ⁵ CPL1xx 1" coupling ⁵ NPL12xx 1/2" threaded nipple ⁵ NPL34xx 3/4" threaded nipple ⁵ NPL1xx 1" threaded nipple ⁵ EHHxx Extra handhole ^{5,7} MAEX Match existing ⁸ USPOM United States point of manufacture ⁹	Standard colors DDB Dark bronze DWH White DBL Black DMB Medium bronze DNA Natural aluminum BA Brushed aluminum Classic colors DSS Sandstone DGC Charcoal gray DTG Tennis green DBR Bright red DSB Steel blue Class 1 architectural anodized ABL Black ADB Dark bronze ANA Natural Architectural colors (powder finish)¹⁰

NOTES

- When ordering tenon mounting and drill mounting for the same pole, follow this example: DM28/T20. The combination includes a required extra handhole.
- 3-1/2" and 4" tenons available on 5" and 6" shafts only.
- The drilling template to be used for a particular luminaire depends on the luminaire that is used. Refer to the Technical Data Section of the Outdoor Binder for Drilling Templates.
- Insert "1" or "2" to designate fixture size; e.g. DM19AST2.
- Specify location and orientation when ordering option. For 1st "x": Specify the height in feet above base of pole. Example: 5ft = 5 and 20ft = 20
For 2nd "x": Specify orientation from handhole (A,B,C,D) Refer to the Handhole Orientation diagram on this page.
- Horizontal arm is 18" x 2-3/8" O.D. tenon standard.
- Combination of tenon-top and drill mount includes extra handhole.
- Must add original order number
- Use when mill certifications are required.
- Finish must be specified. Additional colors available; see www.lithonia.com/archcolors or Architectural Colors brochure (Form No. 794.3).

HANDHOLE ORIENTATION

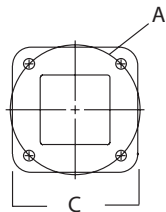
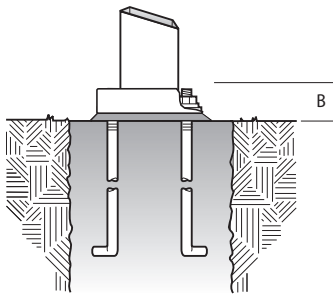


IMPORTANT INSTALLATION NOTES:

- Do not** erect poles without having fixtures installed.
- Factory-supplied templates must be used when setting anchor bolts. Lithonia Lighting will not accept claim for incorrect anchorage placement due to failure to use factory template.
- If poles are stored outside, all protective wrapping must be removed immediately upon delivery to prevent finish damage.
- Lithonia Lighting is not responsible for the foundation design.

SSA Square Straight Aluminum Poles

TECHNICAL INFORMATION										
Catalog Number	Nominal mount ht. (ft)	Pole Shaft Size (in x ft)	Wall Thick (in)	EPA (ft2) with 1.3 gust			Max.	Bolt Circle (in)	Bolt Size (in. x in. x in.)	Approximate ship (lbs.)
				80 mph	90 mph	100 mph				
SSA 8 4C	8	4.0 x 8.0	0.125	16.5	12.6	9.9	300	8.5-9.625	3/4 x 18 x 3	32
SSA 10 4C	10	4.0 x 10.0	0.125	11.5	8.6	6.5	230	8.5-9.625	3/4 x 18 x 3	37
SSA 12 4C	12	4.0 x 12.0	0.125	12.4	9.2	6.9	160	8.5-9.625	3/4 x 18 x 3	40
SSA 14 4C	14	4.0 x 14.0	0.125	9.3	6.7	4.8	120	8.5-9.625	3/4 x 18 x 3	50
SSA 15 4C	15	4.0 x 15.0	0.125	8	5.6	3.9	100	8.5-9.625	3/4 x 18 x 3	52
SSA 16 4C	16	4.0 x 16.0	0.125	6.9	4.7	3.1	90	8.5-9.625	3/4 x 18 x 3	54
SSA 16 4G	16	4.0 x 16.0	0.188	11.8	8.5	6.2	130	8.5-9.625	3/4 x 30 x 3	74
SSA 16 5G	16	5.0 x 16.0	0.188	15	11.1	7.5	280	10.5-11.5	3/4 x 30 x 3	83
SSA 18 4C	18	4.0 x 18.0	0.125	4.9	3	1.7	70	8.5-9.625	3/4 x 18 x 3	57
SSA 18 4G	18	4.0 x 18.0	0.188	9.2	6.4	4.4	100	8.5-9.625	3/4 x 30 x 3	80
SSA 18 5G	18	5.0 x 18.0	0.188	16.8	12.2	8.9	230	10.5-11.5	3/4 x 30 x 3	91
SSA 20 4C	20	4.0 x 20.0	0.125	3.3	1.7	0.5	40	8.5-9.625	3/4 x 18 x 3	62
SSA 20 4G	20	4.0 x 20.0	0.188	7	4.6	2.9	80	8.5-9.625	3/4 x 30 x 3	85
SSA 20 5G	20	5.0 x 20.0	0.188	13.6	9.5	6.6	180	10.5-11.5	3/4 x 30 x 3	107
SSA 20 6G	20	6.0 x 20.0	0.188	22	15.9	11.6	230	12-13	1 x 36 x 4	155
SSA 20 6J	20	6.0 x 20.0	0.25	30.4	22.6	17	300	12-13	1 x 36 x 4	202
SSA 25 5G	25	5.0 x 25.0	0.188	7.2	4.2	2	110	10.5-11.5	3/4 x 30 x 3	130
SSA 25 6G	25	6.0 x 25.0	0.188	13.2	8.6	5.4	180	12-13	1 x 36 x 4	180
SSA 25 6J	25	6.0 x 25.0	0.25	19.7	13.8	9.5	250	12-13	1 x 36 x 4	224
SSA 30 6G	30	6.0 x 30.0	0.188	7	3.4	0.8	130	12-13	1 x 36 x 4	210
SSA 30 6J	30	6.0 x 30.0	0.25	12.2	7.5	4.1	170	12-13	1 x 36 x 4	258
SSA 32 6J	32	6.0 x 32.0	0.25	9.7	5.4	2.3	160	12-13	1 x 36 x 4	272
SSA 35 6J	35	6.0 x 35.0	0.25	6.4	2.6	--	200	12-13	1 x 36 x 4	294
SSA 35 7J	35	6.75 x 35.0	0.25	7.6	3.1	--	150	14.625	1 x 36 x 4	290



POLE DATA					
Shaft base size	Bolt circle A	Bolt projection B	Base square C	Template description	Anchor bolt description
4"C	8.5" - 9.625"	3.125"	9.938"	ABTEMPLATE PJ50045	AB18-0
4"G	8.5" - 9.625"	3.125"	9.938"	ABTEMPLATE PJ50045	AB30-0
5"	10.5" - 11.5"	3.25"	11.563"	ABTEMPLATE PJ50046	AB30-0
6"	12" - 13"	4"	12.25"	ABTEMPLATE PJ50044	AB36-0
7"	14.625"	4.125"	15"	ABTEMPLATE PJ50130	AB36-0

IMPORTANT:

- These specifications are intended for general purposes only. Lithonia reserves the right to change material or design, without prior notice, in a continuing effort to upgrade its products.



POLE-SSA