



Wire Grips

Get the Job Done — Efficiently and Economically

Easy to Use

- Versatility—All models are rated for a variety of wire sizes and types, so fewer grip changes are required.
- No Lock-Ups—Grips open easily and release instantly to quickly insert or remove wire.
- Large Handle Eye Opening—Accepts standard hooks and easily attaches to tackle blocks.
- Choice of Design—Spring-loaded or non-spring-loaded models available.

Rugged and Portable

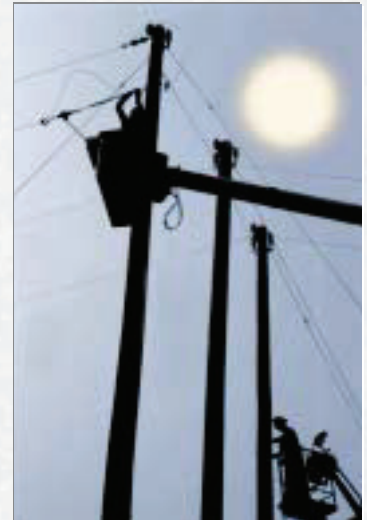
- Forged Steel Construction—Durable yet lightweight.
- Yellow Chromate Finish—Protects components from rust and corrosion.

Hot Line Models

- Spring-Loaded Gate—Standard on all hot line models. Lineman can use a holding stick to open the gate and place the grip on the wire. When released, the gate closes over the wire and prevents the grip from falling off the wire.
- Locking Mechanism—Notched handle on spring-loaded models locks grip in open position for placement on or removal from wire, then releases instantly.

Jaw Options

- Replacement Jaw—Machined with large, aggressive teeth. Available on 5000 and 10,000 lb. models—suitable for applications requiring exclusive use on EHS cable or guy strand.



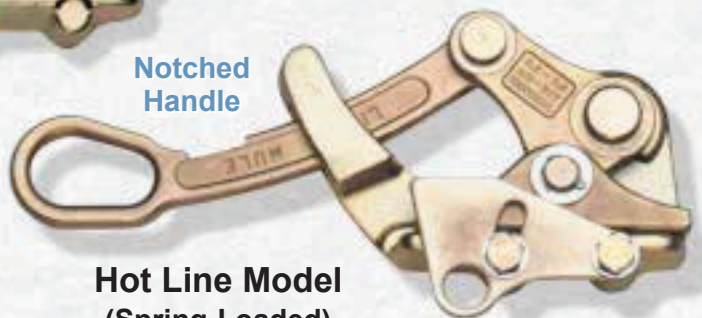
Large Eye Opening



Standard Model (Spring-Loaded)

Riveted Construction

Notched Handle



Hot Line Model (Spring-Loaded)

Gate Plate



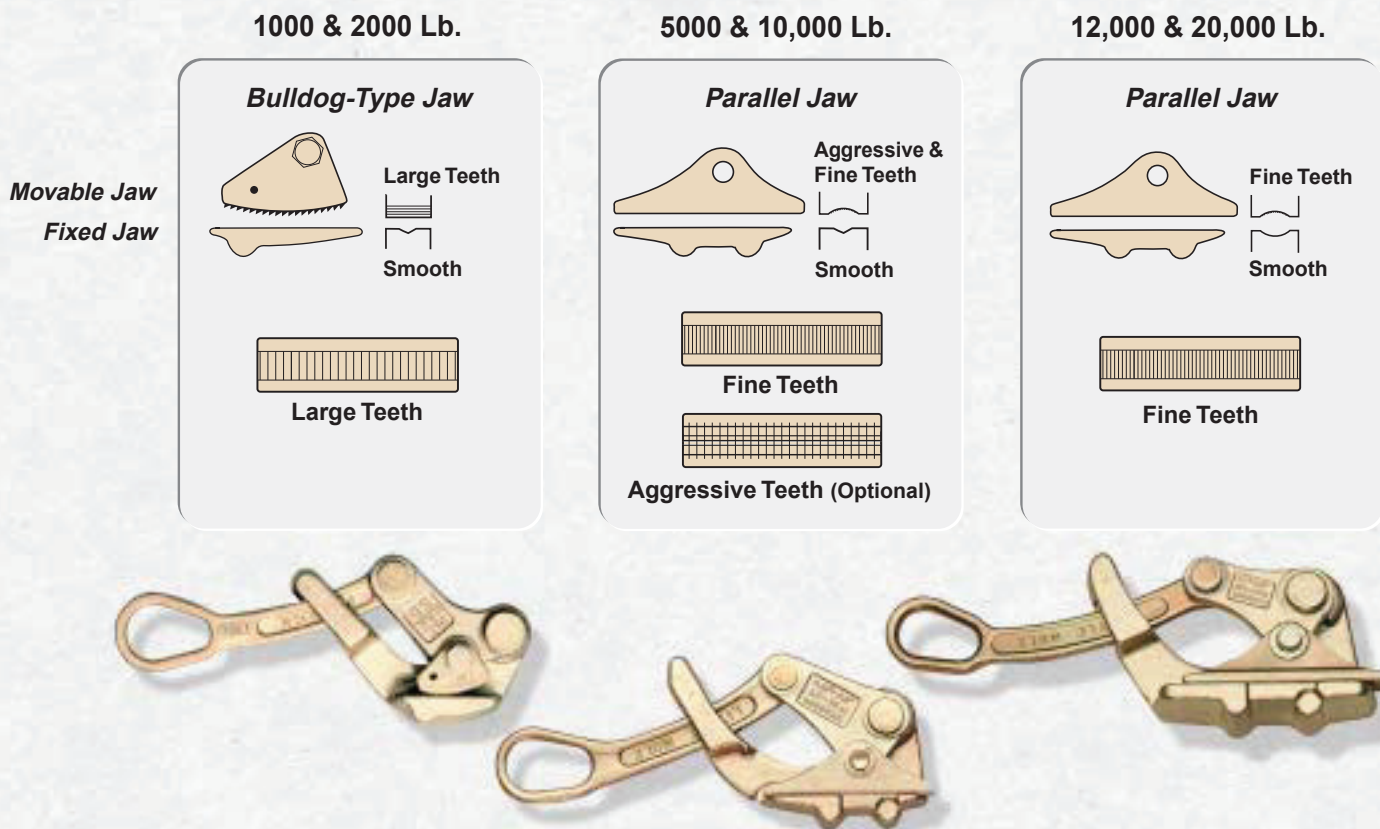
Hot Line Model (Non-Spring-Loaded)

Gate Plate

WARNING

Overloading and Improper Use Can Result in Injury. See Warning on Back Cover.

Jaw and Teeth Configurations



SPECIFICATIONS

Standard and Hot Line Models • 1000 - 20,000 Lbs.

Model Number	Type	Capacity (Lbs.)	Net Weight (Lbs.)	Wire Size				Handle Eye Opening (In.)
				Minimum		Maximum		
				Size (In.)	Gauge	Size (In.)	Gauge	
* LMG1000	Standard Grip Spring Loaded	1000	1/2	.04	18AWG	.394	1/0AWG	.625 dia.
* LMG2000		2000	1	.109	8AWG	.594	4/0AWG	1 x 1 1/2
LMG4500		5000	3 1/4	.18	6AWG	.60	4/0AWG	1 1/4 x 1 3/4
LMG4600		10000	4 1/2	.30	1AWG	.80	450MCM	1 1/4 x 1 3/4
LMG4800		12000	8	.70	397MCM	1.25	1130MCM	1 1/4 x 1 3/4
LMG4700		20000	21	.70	397MCM	1.25	1130MCM	2 1/2 x 3 1/2
LMG4501	Hot Line Grip Spring Loaded Notched Handle	5000	3 1/4	.18	6AWG	.60	4/0AWG	1 1/4 x 1 3/4
LMG4601		10000	4 1/2	.30	1AWG	.80	450MCM	1 1/4 x 1 3/4
LMG4801		12000	8	.70	397MCM	1.25	1130MCM	1 1/4 x 1 3/4
LMG4701		20000	21	.70	397MCM	1.25	1130MCM	2 1/2 x 3 1/2
LMG4502	Hot Line Grip No Spring No Notch	5000	3 1/4	.18	6AWG	.60	4/0AWG	1 1/4 x 1 3/4
LMG4602		10000	4 1/2	.30	1AWG	.80	450MCM	1 1/4 x 1 3/4
LMG4802		12000	8	.70	397MCM	1.25	1130MCM	1 1/4 x 1 3/4
LMG4702		20000	21	.70	397MCM	1.25	1130MCM	2 1/2 x 3 1/2

* Note: 1000 and 2000 Lb. Models Have Bulldog-Type Jaw. All Other Models Have Parallel Jaw.

Get a GRIP!