



LED Post Top Omnidirectional Corn Lamps

10 to 118 Watts – 120-277VAC – 5000K White – E26 & E39 Base – UL



FEATURES

- 5 Year LEDtronics Limited Warranty
- Direct Retrofit into E26 & E39 Base Fixtures
- Energy Savings of up to 85%
- Lumen Maintenance over 70% @ 50,000+ Hours
- Solid State – High Shock/Vibration Resistant
- Even, Omnidirectional Lighting
- Wide Oper. Temp. Range: -40°F to ~+113°F
- Safe to Use in Enclosed Luminaires
- UL/cUL Listed (E322319)
- No UV/IR Radiation
- RoHS Compliant – No Toxic Metals

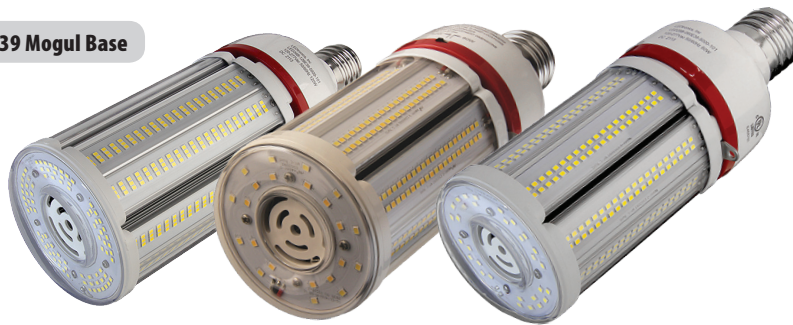
APPLICATIONS

- Street Lighting
- Outdoor Parking Areas Lighting
- Driveway & Walkway Lighting
- Security Lighting
- Parks / Playgrounds
- Rail Road Station Platforms
- Pendant Lighting
- Globe Lighting
- Garden Lighting
- Bollard Lighting



Over 35 Years of LEDtronics Design, Engineering & Manufacturing Experience

E39 Mogul Base



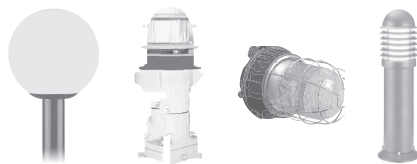
CABLE ENCLOSED



Input Voltage 120~277VAC (Tested @ 120VAC)
Beam Angle 360° Omnidirectional
Dimmability Not Dimmable
Housing Polycarbonate / White
Base E39 Mogul Screw
Operating Temp. -40°F ~+113°F / -40°C ~+45°C
UL/cUL Listing E322319

	LED19B-027E39-5000-101	LED28B-060E39-5000-101	LED36B-120E39-5000-101
Color Temp.	5000K	5000K	5000K
Emitted Color	Pure White	Pure White	Pure White
Input Power	26.65 Watts	56.98 Watts	118 Watts
Input Current	0.253A	0.510A	0.98A
Power Factor	0.8770	0.8812	1.0
Total Lumens	3481 lm	7516.24 lm	18612 lm
Efficacy	130.62 lm/W	131.91 lm/W	158 lm/W
Max. Candela	542 cd	1109 cd	2016 cd
CRI	82.5	82.5	82.5
Net Weight	0.88 lb / 400 g	0.88 lb / 400 g	3.73 lb / 1.69 kg

SUGGESTED APPLICATIONS



AVAILABLE OPTIONS

- Made in USA Available for ARRA Compliance
- Other Colors & White Color Temperatures
- Other Voltages

LEDTRONICS[®]
 America's Premium Brand LED Company™



© 2022 LEDtronics, Inc.



23105 Kashiwa Court, Torrance, CA 90505
 Phone: (800) 579.4875 / (310) 534.1505
 Fax: (310) 534.1424
 E-mail: info@ledtronics.com
 Website: ledtronics.com

To order LEDtronics products, contact the Distributor or Sales Representative in your area.

Visit our website to find your local Distributor or Representative from our worldwide network:

LEDtronics.com

WWW.LEDTRONICS.COM

LOG 856 / Rev 07-2022

Check LEDTRONICS.COM for latest data. Printed material may be outdated.

LED Post Top Omnidirectional Corn Lamps – E26 Base

E26 Medium Screw Base

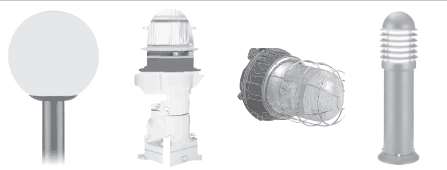


Input Voltage 120~277VAC (Tested @ 120VAC)
Beam Angle 360° Omnidirectional
Housing Polycarbonate / White
Base E26 Edison Medium Screw
Operating Temp. -40°F ~+113°F / -40°C ~+45°C
UL/cUL Listing E322319



	LED19B-010E26-5000-101	LED19B-018E26-5000-101
Color Temp.	5000K	5000K
Emitted Color	Pure White	Pure White
Input Power	10.5 Watts	18 Watts
Input Current	0.088A	0.167A
Power Factor	0.99	0.92
Total Lumens	1740 lm	2765 lm
Efficacy	166 lm/W	150 lm/W
Max. Candela	197 cd	376 cd
CRI	>80	>80
Dimmability	Not Dimmable	Not Dimmable
Dimensions	L6.56 x W02.37 inch L167 x W060 mm	L6.37 x W02.36 inch L162 x W060 mm
Net Weight	0.65 lb / 300 g	0.64 lb / 290.3 g

SUGGESTED APPLICATIONS



CABLE ENCLOSED

