

**Milwaukee**<sup>®</sup>



**165' LASER LINE DETECTOR**



# FASTEST POINT TO POINT ALIGNMENT



**165' Laser Line Detector**  
**48-35-1211**

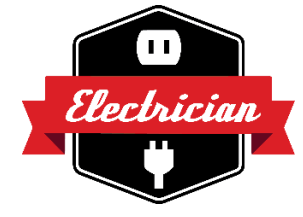
**PRE-ORDERS: OPEN NOW | SHIPPING: AUGUST 16<sup>th</sup>, 2021**

### WHAT IS A LINE LASER DETECTOR?

**Line Laser Detectors/Receivers help users find the laser line when it is not visible to the human eye. This frequently happens when working outdoors and the line is washed out by direct sunlight. This can also happen when working indoors near high levels of ambient light.**



### PRIMARY DETECTOR USERS



### APPLICATION RANGE

**EXTERIOR LAYOUT APPLICATIONS**



**SHORT RANGE GRADE APPLICATIONS**



**ONE PERSON LASER ALIGNMENT**



**EXTENDING LASER RANGE**



**DETECTORS ARE USED ACROSS TRADES TO ENHANCE LASER FUNCTIONALITY**

### CURRENT ISSUES



Difficulty seeing the LCD screen or hearing the audio indication when working at a distance



### MILWAUKEE SOLUTION



**BRIGHT LEDs FOR LONGER DISTANCE ALIGNMENT**



No magnets, or only one-sided magnets

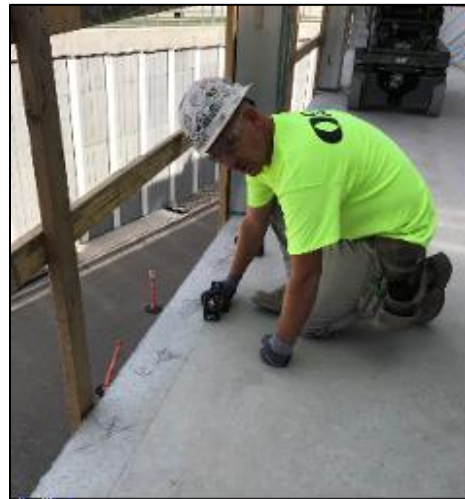


**TWO MAGNETIC SIDES FOR MORE VERSATILE PLACEMENT**

### CURRENT ISSUES



Difficulty aligning points at distance – two-person job



Unable to see the laser line when working outdoors



### MILWAUKEE SOLUTION



HIGH VISIBILITY LED & AUDIO FEEDBACK FOR ONE PERSON LASER SET-UP



SENSOR ARRAY FOR OUTDOOR LAYOUT APPLICATIONS





Nothing but **HEAVY DUTY.**

# PROGRAM OVERVIEW

Pre-Order Date: **07/01/21**

Show Online: **07/06/21**

Launch Ship Date: **08/16/21**



**LONG DISTANCE LED FEEDBACK**



**ADAPTABLE PLACEMENT**

**TWO MAGNETIC SIDES AND CLAMP**



**ADJUSTABLE AUDIO**

**High, Low, Off**

- **LONG DISTANCE ALIGNMENT – LED FEEDBACK**  
Accurate alignment up-to 165'
- **ADAPTABLE PLACEMENT – TWO MAGNETIC SIDES**  
Two magnetic sides and clamp allow users to set-up anywhere
- **ADJUSTABLE AUDIO – HIGH, LOW, OFF**  
Adjustable audio conforms to your needs
- **IP54**  
For jobsite durability
- **3-SIDED LED FEEDBACK**  
To easily read position from any side
- **MATERIAL CLAMP**  
For easy attachment to grade rods and lumber
- **FINE & COARSE ACCURACY SETTINGS**  
Select fine or coarse based on the requirements of the applications  
1/16<sup>th</sup> & 1/8<sup>th</sup>







# 165' LASER LINE DETECTOR

## COMPETITIVE LANDSCAPE



Feature	Benefit	Milwaukee 48-35-1211	PLS SLD GREEN	DeWalt DW0892G	Bosch LR8
		\$149.00	\$175.00	\$120.99	\$99.99
FRONT LED INDICATORS	LONGER DISTANCE ALIGNMENT	LCD display & LED Indicators	LCD display	LCD display	LCD display
TWO MAGNETIC SIDES	EASY CONNECTION TO CEILING GRID AND STEEL STUDS	Yes	No	No	No
ADJUSTABLE AUDIO	ADJUST THE VOLUME DEPENDENT ON THE ENVIRONMENT	Yes	Yes	Yes	Yes
RANGE	EXTENDS THE WORKING RANGE OF YOUR LASER	165'	195'	165'	165'
ADJUSTABLE ACCURACY	ADJUST ACCURACY BASED ON THE APPLICATION	Fine & Coarse	Fine & Coarse	Fine & Coarse	Fine & Coarse

### Will the 48-35-1211 work with all Milwaukee Lasers?

The 165' Laser Detector will work with all Milwaukee Line and Plane Lasers. It will not work with the 3510-21 REDLITHIUM™ USB 3 Point Laser.

### Does the 48-35-1211 work with Red Lasers

No.

### Do competitive lasers work with the Milwaukee Detector?

The Milwaukee Laser Detector is not designed to work with competitive lasers.

### Will the 48-35-1211 work with Rotary Lasers?

No. The 48-35-1211 will only work with Line and Plane Lasers.

### Do Milwaukee Lasers need to be in a detector mode to work?

No. All Milwaukee Line and Plane Lasers are always detector compatible.

