

LIQUID PAINT MARKERS

VERSATILE AND RELIABLE

For over 78 years, Markal® has been the trusted leader in industrial marking solutions because of our commitment to developing new and innovative products for use in some of the world's toughest environments. Ideal for use in the automotive industry, construction, welding, and metal production and fabrication, liquid paint markers are one of the most versatile and relied upon industrial marking tools across the world. These permanent and temporary liquid paint markers offer real paint in multiple tip sizes and colors, including a range of certified colors for nuclear and other corrosion resistant applications.

	VALVE ACTION®	CERTIFIED VALVE ACTION	PRO-LINE® HP	PRO-LINE WP	PRO-LINE XT	PRO-WASH®	PRO-LINE FINE/MICRO	PRO-MAX®	STYLMARK®	BALL PAINT MARKER®
PERMANENT										
Metals										
Clean, Dry	●	●	●	●	●		●	●	●	●
Rough					●				●	●
Rusty					●				●	●
Oily			●							
Wet				●						
Low Corrosion	●	●	●	●	●					●
Nuclear & Military Specifications		●								
Plastics										
Clean, Dry	●	●	●	●	●		●	●	●	●
Rough					●				●	●
Oily			●							
Wet				●						
Rubber										
Clean, Dry	●		●	●	●		●	●	●	●
Rough					●				●	●
Oily			●							
Wet				●					●	●
Glass, Ceramic										
Clean, Dry	●		●	●	●		●	●	●	●
Rough					●				●	●
Wet				●					●	●
Brick, Stone										
Clean, Dry	●		●	●	●		●	●	●	●
Rough					●				●	●
Wet				●					●	●
Cloth, Fabric										
Clean, Dry	●						●	●	●	●
Painted Surface										
Clean, Dry	●		●	●	●		●	●		
Rough					●					
Oily			●							
Wet				●						
Tile, Polished Stone										
Clean, Dry	●		●	●	●		●	●		
Wet				●						
REMOVABLE										
Non-porous Surfaces										
Clean, Dry							●			

● Preferred Selection ● Secondary Selection

Valve Action®

Valve Action is a fast-drying liquid paint marker that provides long-lasting, wear- and weather-resistant marks that are safe for almost any surface. As the most versatile liquid paint marker in the world, the xylene-free paint reduces user health risks and is available in 18 bold and fluorescent colors for accurate mark identification.

Features & Benefits

- 14 standard and 4 fluorescent colors for improved mark identification, quality control, and parts inspection
- Durable metal barrel and clip-cap reduce breakage and store easily in pocket
- Marking range: -50°F to 150°F (-46°C to 66°C)
- Fast-drying, permanent paint for immediate handling, reduces work downtime
- Xylene-free paint reduces user health risks and eliminates California Proposition 65, EPA HAPS and SARA 313 concerns in the U.S.A.
- Dura-Nib medium bullet tip resists wear to provide long marking life

Industry Uses

Industrial manufacturing
Automotive and other transportation
Automotive assembly
Metal fabrication
Construction
Welding
Shipping supply
Textile
Aviation and aerospace

Surface Uses

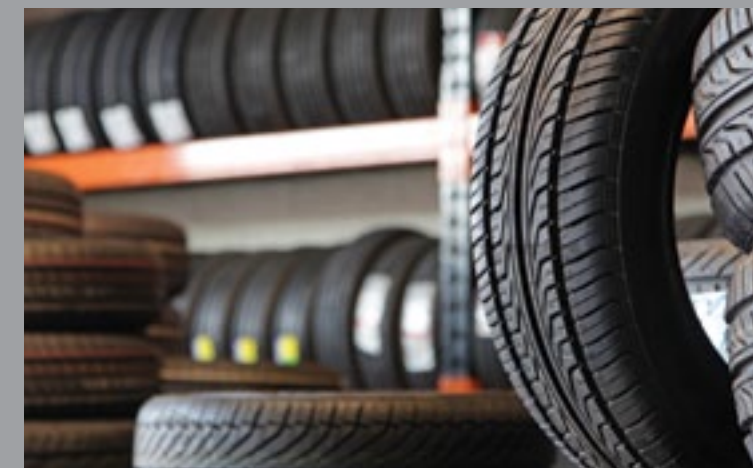
Steel and iron
Plastic
Glass
Pipes and tubes
Rubber and tires
Cloth, fabric (textiles)

Details 48 Case

Mark Size 1/8" (3mm)

96809	●	Brown*
96817	●	Purple*
96820	●	White*
96821	●	Yellow*
96822	●	Red*
96823	●	Black*
96824	●	Orange*
96825	●	Blue*
96826	●	Green*
96827	●	Gold*
96828	●	Light Green*
96830	●	Pink*
96832	○	Aluminum*
96835	●	Light Blue*
97050	●	Fluorescent Yellow
97051	●	Fluorescent Green
97052	●	Fluorescent Orange
97053	●	Fluorescent Pink

* Indicates that this marker color is low in chlorides, halogens, and sulfurs for low corrosion marking requirements.





Stylmark®



Markal® Stylmark is a metal-ball tip marker for marking most surfaces. The aluminum squeeze tube and thick paint makes it suitable for rough, vertical and overhead surfaces with excellent adhesion on oily and wet surfaces. Xylene-free paint reduces user health risks.

Details 48 Case

- 1/8" (3mm)
 96652 ● White*
 96653 ● Yellow
 96654 ● Red
 96655 ● Black
 96657 ● Blue
 96658 ● Green

Features & Benefits

- Durable steel ball tip marks with indelible paint on smooth or rough surfaces
- Steel ball tip is resistant to very rough surfaces for long marking life
- 6 bold, bright paint colors are weather-, water-, and UV-resistant
- Unique paint designed to not drip on vertical or overhead surfaces

- Marking range -4°F to 158°F (-20°C to 70°C)
- Mark temperature resistance: 392°F (200°C)
- Made in EU

Industry Uses

- Steel mills and warehouses
- Forge and casting foundries
- Ship building and repair
- Metal fabrication
- Metal production
- Construction
- Tire
- Welding

Surface Uses

- Steel and iron
- Concrete, stone
- Asphalt
- Masonry
- Plastic
- Rubber and tires
- Cloth, fabric (textiles)

BALL PAINT MARKER®



Markal BALL PAINT MARKER is a liquid paint marker using a durable metal-ball tip for writing on hard surfaces. Ideal for identifying fabricated steel and other rough surfaces that are stored in harsh environments, the squeeze bottle meters paint in a thick or thin line for long-lasting marks.

Details 48 Case

- Mark Size 1/8" (3mm)
 84620 ● White*
 84621 ● Yellow*
 84622 ● Red*
 84623 ● Black*
 84624 ● Orange
 84625 ● Blue
 84626 ● Green

Features & Benefits

- Durable metal-ball tip resists wear and clogging for long-marking life on rough surfaces
- Non-drip paint formula allows for easy jobsite marking
- Industrial paint withstands harsh environments and weather conditions

- Plastic cap keeps tip clean between jobs
- Marking range -50°F to 150°F (-46°C to 66°C)

Industry Uses

- Steel mills and warehouses
- Forge and casting foundries
- Ship building and repair
- Metal fabrication
- Construction
- Metal production
- Aviation and aerospace

Surface Uses

- Steel and iron
- Pipes and tubes
- Concrete, stone
- Asphalt



* Indicates that this marker color is low in chlorides, halogens, and sulfurs for low corrosion marking requirements.

markal.com



Marker Merchandisers

Perfect for showroom counters or on the shop floor, our most popular markers are available in additional unique packaging options.

Details 1 Case

- Clip Strip Valve Action®**
 96800S ● White/1 Case 24 Markers
 96801S ● Yellow/1 Case 24 Markers

- Cylinder Display Valve Action**
 96080 ○ Assorted 10 ea.
 Black, White and Yellow
 1 Case 30 Markers

- Box Display Valve Action**
 96810 ● White/1 Case 48 Markers
 96811 ● Yellow/1 Case 48 Markers
 96819 ○ Assorted 8 ea.
 White and Yellow - 4 ea. Black and Red/
 /1 Case 24 Markers



markal.com

