

JUNO**TRAC-MASTER®**

Avant Garde

**DIE CAST GIMBAL RING
PAR LAMPHOLDERS****T1020, T1030 and T1038**

Project: _____

Fixture Type: _____

Location: _____

Contact/Phone: _____

PRODUCT DESCRIPTION

The Die Cast Gimbal Ring fixture series offers premium construction features and extensive lamp flexibility. The narrow, arched yoke minimizes the fixture mass and gives it a fresh, modern appearance. It is designed to accommodate halogen PAR lamps as well as the latest technology LED lamps. Its robust design is mostly open, allowing air circulation which enables LED lamps to operate as cool as possible. Two versions are available for each size: an E26 medium screw base version and a GU24 twist & lock version, enabling this series to use practically any style of PAR lamp and comply with the strictest of energy codes. The E26 versions have a high wattage and low wattage labeling option to further facilitate energy code compliance. The Die Cast Gimbal Ring fixture series has a front-loading design making lamp changes a breeze. Each fixture possesses a tri-lobe locking knob to prevent the fixture from "drooping" over time due to lamp weight and to enable the fixture aiming to be locked in place, even during lamp changes.

**PRODUCT SPECIFICATIONS**

Construction Die cast aluminum housing and die-formed steel yoke • Tri-lobe aiming lock knob to secure fixture aiming.

Adapter Copper alloy contacts provide precise spring action - no arcing and will not take a set • True, positive electrical ground • On/off switch included • Patented embossed polarity arrows on bottom of adapter • Spring-loaded positive latch with embossed polarity arrows secures trac light to trac • "Pull-up" contact to up position for two-circuit application.

Aiming 90° vertical aiming capability and 358° rotation.

Labels UL and C-UL Listed • E26 versions have choice of wattage rating labels to facilitate energy code compliance.

Product specifications subject to change without notice.

High Wattage PAR20 E26 Medium Base Lamp

Lamp 50W max. PAR20 lamp.

Socket E26 medium base porcelain with nickel plated copper screw shell.

Catalog Number	Socket Type	Finish	Lamp
T1020E-BL	E26 Medium Base	Black	50W max. PAR20
T1020E-SL	E26 Medium Base	Silver	50W max. PAR20
T1020E-WH	E26 Medium Base	White	50W max. PAR20

Low Wattage PAR20 E26 Medium Base Lamp

Lamp 10W max. PAR20 lamp.

Socket E26 medium base porcelain with nickel plated copper screw shell.

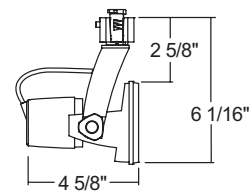
Catalog Number	Socket Type	Finish	Lamp
T1020E-10W-BL	E26 Medium Base	Black	10W max. PAR20
T1020E-10W-SL	E26 Medium Base	Silver	10W max. PAR20
T1020E-10W-WH	E26 Medium Base	White	10W max. PAR20

Low Wattage PAR20 GU24 Twist & Lock Base

Lamp 10W max. PAR20 lamp.

Socket GU24 twist & lock.

Catalog Number	Socket Type	Finish	Lamp
T1020G-BL	GU24 Twist & Lock Base	Black	10W max. PAR20
T1020G-SL	GU24 Twist & Lock Base	Silver	10W max. PAR20
T1020G-WH	GU24 Twist & Lock Base	White	10W max. PAR20

DIMENSIONS

TRAC-MASTER®

Avant Garde

DIE CAST GIMBAL RING PAR LAMP HOLDERS**T1020, T1030 and T1038****High Wattage PAR30L E26 Medium Base Lamp****Lamp** 75W max. PAR30L lamp.**Socket** E26 medium base porcelain with nickel plated copper screw shell.

Catalog Number	Socket Type	Finish	Lamp
T1030E-BL	E26 Medium Base	Black	75W max. PAR30L
T1030E-SL	E26 Medium Base	Silver	75W max. PAR30L
T1030E-WH	E26 Medium Base	White	75W max. PAR30L

Low Wattage PAR30L E26 Medium Base Lamp**Lamp** 18W max. PAR30L lamp.**Socket** E26 medium base porcelain with nickel plated copper screw shell.

Catalog Number	Socket Type	Finish	Lamp
T1030E-18W-BL	E26 Medium Base	Black	18W max. PAR30L
T1030E-18W-SL	E26 Medium Base	Silver	18W max. PAR30L
T1030E-18W-WH	E26 Medium Base	White	18W max. PAR30L

Low Wattage PAR30L GU24 Twist & Lock Base**Lamp** 18W max. PAR30L lamp.**Socket** GU24 twist & lock.

Catalog Number	Socket Type	Finish	Lamp
T1030G-BL	GU24 Twist & Lock Base	Black	18W max. PAR30L
T1030G-SL	GU24 Twist & Lock Base	Silver	18W max. PAR30L
T1030G-WH	GU24 Twist & Lock Base	White	18W max. PAR30L

High Wattage PAR38 E26 Medium Base Lamp**Lamp** 150W max. PAR38 lamp.**Socket** E26 medium base porcelain with nickel plated copper screw shell.

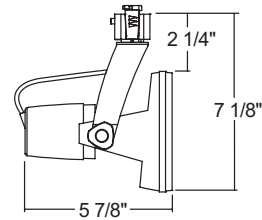
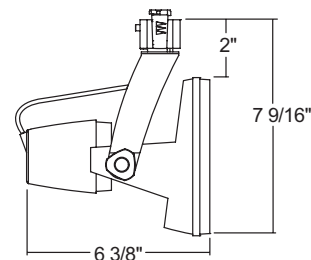
Catalog Number	Socket Type	Finish	Lamp
T1038E-BL	E26 Medium Base	Black	150W max. PAR38
T1038E-SL	E26 Medium Base	Silver	150W max. PAR38
T1038E-WH	E26 Medium Base	White	150W max. PAR38

Low Wattage PAR38 E26 Medium Base Lamp**Lamp** 25W max. PAR38 lamp.**Socket** E26 medium base porcelain with nickel plated copper screw shell.

Catalog Number	Socket Type	Finish	Lamp
T1038E-25W-BL	E26 Medium Base	Black	25W max. PAR38
T1038E-25W-SL	E26 Medium Base	Silver	25W max. PAR38
T1038E-25W-WH	E26 Medium Base	White	25W max. PAR38

Low Wattage PAR38 GU24 Twist & Lock Base**Lamp** 25W max. PAR38 lamp.**Socket** GU24 twist & lock.

Catalog Number	Socket Type	Finish	Lamp
T1038G-BL	GU24 Twist & Lock Base	Black	25W max. PAR38
T1038G-SL	GU24 Twist & Lock Base	Silver	25W max. PAR38
T1038G-WH	GU24 Twist & Lock Base	White	25W max. PAR38

DIMENSIONS**DIMENSIONS**

1300 S. Wolf Road • Des Plaines, IL 60018 • Phone (847) 827-9880 • Fax (847) 827-2925
 220 Chrysler Drive • Brampton, Ontario • Canada L6S 6B6 • Phone (905) 792-7335 • Fax (905) 792-0064
 Visit us at www.junolightinggroup.com

Printed in U.S.A. ©2014 Juno Lighting, LLC.