



# TRAC-LITES

## LOW VOLTAGE CLASSICS

### R701, R702, R731 and R740

Project: \_\_\_\_\_

Fixture Type: \_\_\_\_\_

Location: \_\_\_\_\_

Contact/Phone: \_\_\_\_\_

#### PRODUCT DESCRIPTION

**Socket** Ceramic Bi-Pin.

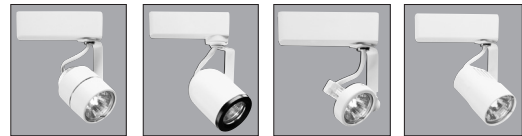
**Transformer** 50VA 12V electronic transformer with circuit protection.

**Aiming** 90° vertical aiming capability and 358° rotation.

**Adapter** Copper alloy contacts provide precise spring action • True, positive electrical ground • Spring-loaded locking latch with embossed polarity arrows secures trac light to trac • Compatible with both Trac-Lites and Trac-Master Trac • "Pull-up" contact to up position for use on Trac-Master two-circuit trac.

**Labels** UL/CUL listed.

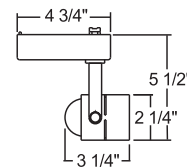
Product specifications subject to change without notice.



#### Low Voltage MR16 Cylinder

**Construction** Polycarbonate transformer housing with a painted formed steel lamp housing.

Catalog Number	Finish	Lamp
R701WH	White	12V, 20-50W MR16
R701BL	Black	12V, 20-50W MR16



#### ACCESSORIES

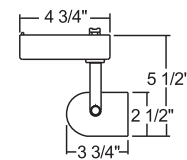
Cat. No.	Description	Cat. No.	Description	Cat. No.	Description
T741-6	Color Filters/Lenses	T7477	Prismatic Spread Lens	T7478	Linear Spread Lens
T7401-18	Dichroic Lenses	T7420	Diffuse Spread Lens	T7421	Uniformity Lens
T7422	UV Filter Lens	T7459BL	Hexcell Louver		

See specification sheet D1.2.2 for details.

#### Low Voltage MR16 Roundback

**Construction** Polycarbonate transformer housing with a painted formed steel lamp housing.

Catalog Number	Finish	Lamp
R702WH	White	12V, 20-50W MR16
R702BL	Black	12V, 20-50W MR16
R702BZ	Painted Bronze	12V, 20-50W MR16



#### ACCESSORIES

Cat. No.	Description	Cat. No.	Description	Cat. No.	Description
T551-5	Color Filters	T557	Prismatic Spread Lens	T559	Linear Spread Lens
T5501-18	Dichroic Lenses	T5520	Diffuse Spread Lens	T5521	Uniformity Lens
T5522	UV Filter Lens	T5559BL	Hexcell Louver		

See specification sheet D1.2.2 for details.

# TRAC-LITES

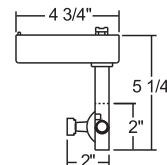
## LOW VOLTAGE CLASSICS

### R701, R702, R731 and R740

#### Low Voltage MR16 Gimbal Ring

**Construction** Polycarbonate transformer housing with a painted formed steel lamp housing.

Catalog Number	Finish	Lamp
<b>R731WH</b>	White	12V, 20-50W MR16
<b>R731BL</b>	Black	12V, 20-50W MR16
<b>R731SL</b>	Silver	12V, 20-50W MR16
<b>R731BZ</b>	Painted Bronze	12V, 20-50W MR16



#### ACCESSORIES

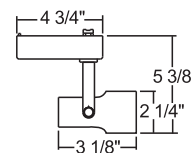
Cat. No.	Description	Cat. No.	Description	Cat. No.	Description
<b>T741-6</b>	Color Filters/Lenses	<b>T7477</b>	Prismatic Spread Lens	<b>T7478</b>	Linear Spread Lens
<b>T7401-18</b>	Dichroic Lenses	<b>T7420</b>	Diffuse Spread Lens	<b>T7421</b>	Uniformity Lens
<b>T7422</b>	UV Filter Lens	<b>T7459BL</b>	Hexcell Louver		

See specification sheet D1.2.2 for details.

#### Low Voltage MR16 Pinchback

**Construction** Polycarbonate transformer housing with a painted die-cast aluminum lamp housing.

Catalog Number	Finish	Lamp
<b>R740WH</b>	White	12V, 20-50W MR16
<b>R740BL</b>	Black	12V, 20-50W MR16
<b>R740BZ</b>	Painted Bronze	12V, 20-50W MR16



#### ACCESSORIES

Cat. No.	Description	Cat. No.	Description	Cat. No.	Description
<b>T741-6</b>	Color Filters/Lenses	<b>T7477</b>	Prismatic Spread Lens	<b>T7478</b>	Linear Spread Lens
<b>T7401-18</b>	Dichroic Lenses	<b>T7420</b>	Diffuse Spread Lens	<b>T7421</b>	Uniformity Lens
<b>T7422</b>	UV Filter Lens	<b>T7459BL</b>	Hexcell Louver		

See specification sheet D1.2.2 for details.



1300 S. Wolf Road • Des Plaines, IL 60018 • Phone (847) 827-9880 • Fax (847) 827-2925  
 220 Chrysler Drive • Brampton, Ontario • Canada L6S 6B6 • Phone (905) 792-7335 • Fax (905) 792-0064  
 Visit us at [www.junolightinggroup.com](http://www.junolightinggroup.com)

Printed in U.S.A. ©2011 Juno Lighting, LLC.