

4" IC-Rated Junction Box Downlight

New construction solution for shallow plenum and fire-rated ceilings

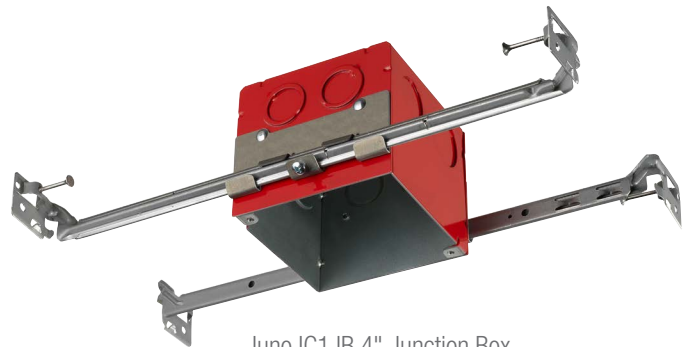


Juno® 4" IC-Rated Junction Box Downlight

The Juno® 4" junction box housing provides a variety of solutions in one small box. This versatile, IC-rated housing utilizes existing Juno downlight and adjustable LED trims, and surface mount fixtures. New construction installation is quick, easy and even ideal in shallow plenum applications. Additionally, a maximum 2-hour fire-rated ceiling assembly can be maintained when installed according to the International Building Code, Section 714. For a one-stop solution on your next new construction project, the Juno IC1JB has you covered!

Features include:

- 4" IC-rated Air-Loc junction box housing can be completed covered with insulation
- Patented Real Nail® 3 bar hangers: telescoping system with pre-installed removable bugle-headed nail for easy repositioning of housing in joist construction
- **Compatible with:**
 - Juno Basics Series™ 4" Downlight LED (4RLD Series) Trims
 - Juno Basics Series™ 4" Adjustable LED (4RLA Series) Trims
 - Juno Basics Series™ 6" Surface Mount Downlights (6RLS Series)
 - Juno SlimForm™ (JSF and JSFSQ Series)



Juno IC1JB 4" Junction Box Housings are an ideal low-profile, downlighting solution when used with compatible LED trims and surface mount fixtures.



Included Hardware:
For use with RLD & RLA trims

Ordering Information

Catalog Number	Description	CI Code
IC1JB	4" IC New Construction Junction Box	*250MY8

Accessories

Catalog Number	Description
JSFMTGPLT 4X4	Juno SlimForm™ Mounting Plate. Required mounting plate to make Juno SlimForm fixtures (JSF and JFSQ) compatible with IC1JB.



Juno® 4" Junction Box Downlight Installation

Whether you need a downlight, adjustable gimbal or surface mount fixture, the IC1JB housing is easy to install in just a few simple steps. Up to a maximum 2-hour fire-rated ceiling assembly can be achieved when installed per International Building Code, Section 714.

Required ceiling cut-out is 4-1/4" square and installs into ceilings up to 1-1/4" thick*. The following is an installation example utilizing the housing and retrofit trim with the supplied mounting hardware.

For your safety, refer to the IC1JB installation instruction sheet for complete installation details.



Extend the bar hangers to fit between the ceiling joist and remove the appropriate knock-out(s).



Make electrical connections using stripped supply wires with quick connectors or cap with wire nuts (LED source dependent). Then, secure the mounting bracket to the junction box using the flat head screws provided.

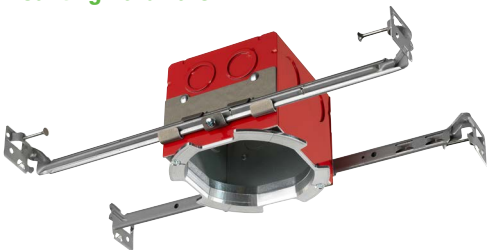


Place provided trim ring around LED retrofit trim and plug the connector provided on the LED trim into the mating connector in the junction box housing.

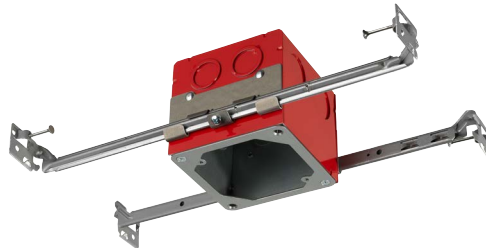


Insert the trim into the housing using push in friction springs and turn power on to the fixture.

Mounting Hardware



IC1JB housing with supplied mounting hardware (compatible with RLD & RLA trims)



IC1JB housing with mounting plate for Juno SlimForm installations (**JSFMTGPLT 4X4** required for JSF/JSFSQ fixtures)

* For thicker ceilings, use a standard #8-32 flat head screw per required length.

Juno® IC1JB Housing Compatible LED Trims and Surface Mount Fixtures

One box... a variety of options. For a full fixture solution, simply add one of the LED options below.



Compatible LED Series

Ordering Information

4RLD

Series	Generation	Lenses	Color Temperature	CRI	Voltage	Driver	Trim Finish
4RLD 4" Juno Basics Retrofit Downlight	G3 Generation 3	06LM 600 Nominal Lumens	27K 2700K	90CRI 90+ CRI	120 120V	FRPC Forward/ Reverse Phase	WWH White
		09LM 900 Nominal Lumens	30K 3000K				
			35K 3500K				

4RLA

Series	Generation	Lenses	Color Temperature	CRI	Distribution	Voltage	Driver	Trim Finish
4RLA 4" Juno Basics Retrofit Adjustable	G2 Generation 2	06LM 600 Nominal Lumens	27K 2700K	90CRI 90+ CRI	NFL Narrow Flood	120 120V	FRPC Forward/ Reverse Phase	WH White
			30K 3000K		WFL Wide Flood			

6RLS

Series	Generation	Lenses	Color Temperature	CRI	Voltage	Driver	Trim Finish
6RLS 6" Juno Basics Retrofit Surface Mount	G2 Generation 2	07LM 700 Nominal Lumens	27K 2700K	90CRI 90+ CRI	120 120V	FRPC Forward/ Reverse Phase	WH White
		10LM 1000 Nominal Lumens	30K 3000K				

Juno SlimForm™ (JSF/JSFSQ)

Example: JSFSQ 5IN 07LM 27K 90CRI 120 FRPC WH, JSF 11IN 13LM 30K 90CRI MVOLT ZT WH

Series	Size/Lumens	CCT	CRI	Voltage/Driver	Finish	Options
JSF Juno SlimForm™ LED Series, Round	7IN 10LM 7" Housing, 1000 Lumens	27K 2700K	90CRI 90+ CRI	120 FRPC 120V (Forward phase/ ELV Dimmable)	WH White	EL ^{1,2} Integral Battery Back-up
	11IN 13LM 11" Housing, 1300 Lumens	30K 3000K				
	13IN 18LM 13" Housing, 1800 Lumens	35K 3500K				
	40K 4000K					
JSFSQ Juno SlimForm™ LED Series, Square	5IN 07LM 5" Housing, 700 Lumens			MVOLT ZT Universal 120-277V (0-10V Dimmable)		EBX ¹ Empty Back Box
	7IN 10LM 7" Housing, 1000 Lumens					
	12IN 13LM 12" Housing, 1300 Lumens					
	14IN 18LM 14" Housing, 1800 Lumens					

¹ Available with 11IN, 12IN, 13IN and 14IN models only.

² Available with MVOLT ZT option only.

Note: The JSFMTGPLT 4X4 Mounting Plate is required to install Juno SlimForm™ fixtures onto IC1JB housings. Decorative trims and shrouds are also available. See IC1JB for Juno Slimform specifications for further details.

