

## BBP®11 1" Small Core Label Rolls:

### Wire & Cable Materials

- B-472 Flame Retardant Polyimide Material** - Polyimide material specifically designed to self-extinguish and prevent flames from propagating.
- B-437 Topcoated Polyvinylfluoride Material** - White or yellow polyvinylfluoride labels with a matte finish used most frequently in wire and cable identification applications where self-extinguishing features are required. This material utilizes a permanent acrylic adhesive and has excellent resistance to water, oil and other common fluids.
- B-498 Repositionable Vinyl Cloth Material** - Repositionable vinyl cloth label for wire, cable, and component marking. Adhesive and cloth backing offers excellent holding power, while easily being repositioned and removed.
- B-499 Nylon Cloth Material** - Nylon cloth with permanent adhesive allows labeling in environments with heat, cold, oil and dirt. Ideal for wire and cable marking, electronic component marking, laboratory vial identification, and general labeling

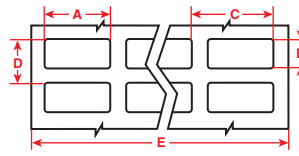


Figure 1

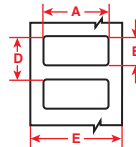


Figure 2

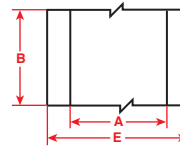


Figure 3



Diagram	Part Number	B-#	Material	Color	Label Width A Inch (mm)	Label Height B Inch (mm)	Horiz. Repeat C Inch (mm)	Vert. Repeat D Inch (mm)	Web Width E Inch (mm)	Labels Per Row	Labels Per Pkg	Rec. Ribbon
<b>B-472 Flame Retardant Polyimide Wire Wraps</b>												
Fig. 3	THT-105-472-SC	B-472	Polyimide	White	1.500 (38.1)	300 ft. (91.4 m)	-	-	1.750 (44.45)	1	1 roll cont.	R4313
Fig. 3	THT-105-472-YL-SC	B-472	Polyimide	Yellow	1.500 (38.1)	300 ft. (91.4 m)	-	-	1.750 (44.45)	1	1 roll cont.	R4313
Fig. 3	THT-21-472-SC	B-472	Polyimide	White	3.000 (76.2)	300 ft. (91.4 m)	-	-	3.200 (81.28)	1	1 roll cont.	R4313
Fig. 3	THT-21-472-YL-SC	B-472	Polyimide	Yellow	3.000 (76.2)	300 ft. (91.4 m)	-	-	3.200 (81.28)	1	1 roll cont.	R4313
<b>B-437 Topcoated Polyvinylfluoride Material</b>												
Fig. 3	THT-105-437-SC	B-472	Polyimide	White	1.500 (38.1)	300 ft. (91.44 m)	-	-	1.750 (44.45)	1	1 roll cont.	R4313
Fig. 3	THT-105-437-YL-SC	B-472	Polyimide	Yellow	1.500 (38.1)	300 ft. (91.44 m)	-	-	1.750 (44.45)	1	1 roll cont.	R4313
Fig. 3	THT-21-437-SC	B-472	Polyimide	White	3.000 (76.2)	300 ft. (91.44 m)	-	-	3.200 (81.28)	1	1 roll cont.	R4300
Fig. 3	THT-21-437-YL-SC	B-472	Polyimide	Yellow	3.000 (76.2)	300 ft. (91.44 m)	-	-	3.200 (81.28)	1	1 roll cont.	R4313
<b>B-498 Vinyl Cloth Material</b>												
Fig. 1	THT-90-498-2.5-SC	B-498	Vinyl Cloth	White	0.250 (6.4)	1.437 (36.5)	0.350 (8.9)	1.562 (39.7)	2.200 (55.9)	6	2,500	R6313
Fig. 3	THT-92-498-SC	B-498	Vinyl Cloth	White	0.375 (9.5)	165 ft. (50.8 m)	-	-	1.000 (25.4)	1	1 Cont.	R6313
Fig. 1	THT-68-498-5-SC	B-498	Vinyl Cloth	White	0.500 (12.7)	0.750 (19.1)	0.600 (15.2)	0.850 (21.6)	2.500 (63.5)	4	5,000	R6313
Fig. 1	THT-14-498-5-SC	B-498	Vinyl Cloth	White	0.650 (16.5)	0.200 (5.1)	0.700 (17.8)	0.300 (7.6)	2.950 (74.9)	4	5,000	R6313
Fig. 1	THT-1-498-5-SC	B-498	Vinyl Cloth	White	0.750 (19.1)	0.250 (6.4)	0.800 (20.3)	0.350 (8.9)	3.350 (85.1)	4	5,000	R6313
Fig. 1	THT-91-498-2.5-SC	B-498	Vinyl Cloth	White	0.750 (19.1)	0.937 (23.8)	0.875 (22.2)	1.062 (27.0)	3.500 (88.9)	4	2,500	R6313
Fig. 1	THT-165-498-2.5-SC	B-498	Vinyl Cloth	White	0.800 (20.3)	1.437 (36.5)	0.900 (22.9)	1.562 (39.7)	3.700 (94.0)	4	2,500	R6313
Fig. 1	THT-95-498-2.5-SC	B-498	Vinyl Cloth	White	0.800 (20.3)	1.437 (36.5)	0.900 (22.9)	1.562 (39.7)	2.800 (71.1)	3	2,500	R6313
Fig. 1	THT-88-498-2.5-SC	B-498	Vinyl Cloth	White	1.000 (25.4)	0.750 (19.1)	1.100 (27.9)	0.875 (22.2)	2.300 (58.4)	2	2,500	R6313
Fig. 2	THT-199-498-3-SC	B-498	Vinyl Cloth	White	1.050 (26.7)	0.250 (6.4)	-	0.350 (8.9)	1.250 (31.8)	1	3,000	R6313
Fig. 2	THT-17-498-1.5-SC	B-498	Vinyl Cloth	White	2.000 (50.8)	1.000 (25.4)	-	1.125 (28.6)	2.200 (55.9)	1	1,500	R6313
<b>B-499 Nylon Cloth Material</b>												
Fig. 2	THT-125-499-1.5-SC	B-499	Nylon Cloth	White	0.900 (22.9)	0.500 (12.7)	-	0.600 (15.2)	1.100 (27.9)	1	1,500	R4913
Fig. 1	THT-152-499-1.5-SC	B-499	Nylon Cloth	White	1.000 (25.4)	0.375 (9.5)	1.100 (27.9)	0.475 (12.)	2.300 (58.4)	2	1,500	R4913
Fig. 2	THT-136-499-1.5-SC	B-499	Nylon Cloth	White	1.500 (38.1)	0.750 (19.1)	-	0.875 (22.2)	1.750 (44.45)	1	1,500	R4913
Fig. 2	THT-151-499-1.5-SC	B-499	Nylon Cloth	White	2.000 (50.8)	0.250 (6.4)	-	0.350 (8.9)	2.200 (55.9)	1	1,500	R4913
Fig. 2	THT-137-499-1.5-SC	B-499	Nylon Cloth	White	2.000 (50.8)	1.000 (25.4)	-	1.125 (28.6)	2.200 (55.9)	1	1,500	R4913