

Random Orbital Systems



3M™ Abrasive Discs for Random Orbital Sanding

3M™ Stikit™ and PSA Discs are designed to handle a wide range of sanding and finishing needs. These discs have a pressure sensitive adhesive coating on the back side for easy application and clean removal.

Scotch-Brite™ Random Orbital (RO) Discs are engineered to give you a faster-cutting, longer-lasting and more consistent alternative to paper and cloth-back coated abrasives on applications like prepping bare metal for painting. These innovative discs are constructed especially for random orbital sanders, using a non-woven nylon web embedded with premium ceramic grain. The result is a longer-lasting disc that offers a quicker initial cut than most coated abrasives designed for random orbital sanders — plus a more consistent finish from beginning to end.

3M™ and Scotch-Brite™ Disc Selection Guide

| Product | Anti-Loading | Backing | Performance | Application | | Metal Type | | | | | | |
|-------------------------|--------------|-----------------|-------------|-------------|-----------|-----------------|----------|--------------|----------|--------------|----------------------------|---|
| | | | | Blending | Finishing | Stainless Steel | Aluminum | Carbon Steel | Titanium | Nickel Alloy | Non-Ferrous (Brass Bronze) | |
| NX | Yes | C & D wt. Paper | Good | ■ | ■ | ■ | ■ | ■ | | | | |
| 341D | — | X wt. Cloth | Good | ■ | ■ | | ■ | ■ | | | | ■ |
| 236U | Yes | C wt. Paper | Better | □ | □ | | □ | □ | | | | |
| 426U | Yes | A wt. Paper | Better | | □ | □ | □ | □ | | | | |
| 363I | — | F wt. Paper | Better | □ | □ | | □ | □ | | | | |
| 202DZ | — | J wt. Cloth | Better | □ | □ | | □ | | | | | □ |
| 348D | — | X wt. Cloth | Better | □ | | | □ | □ | | | | |
| 735U | Yes | C wt. Paper | Best | ■ | ■ | | ■ | ■ | | | | |
| 763U | — | F wt. Paper | Best | ■ | ■ | ■ | ■ | ■ | | | | |
| 777F | — | Y wt. Cloth | Best | ■ | ■ | ■ | | ■ | ■ | ■ | | |
| 900DZ | — | J wt. Cloth | Best | ■ | ■ | | ■ | | | | | |
| Scotch-Brite™ RO | — | Nylon | Best | ■ | ■ | ■ | ■ | ■ | ■ | ■ | | ■ |

3M™ PSA Discs

3M™ PSA Cloth Disc 348D

- Aluminum oxide on an X wt. cloth backing
- Heavy-duty, cloth-backed discs for more aggressive applications
- Provides excellent adhesion while removing easily



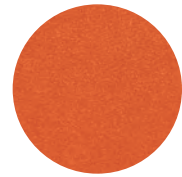
| UPC | Diameter | Grade | Min./Case |
|----------------------|----------|-------|-----------|
| Cloth Backing | | | |
| 051144-20913-2 | 2" | 36 | 50/200 |
| 051144-20911-8 | 2" | 50 | 50/200 |
| 051144-20910-1 | 2" | 60 | 50/200 |
| 051144-20909-5 | 2" | 80 | 50/200 |
| 051144-20908-8 | 2" | P100 | 50/200 |
| 051144-20907-1 | 2" | P120 | 50/200 |
| 051144-01335-7 | 3" | 40 | 50/200 |
| 051144-01334-0 | 3" | 50 | 50/200 |
| 051144-01333-3 | 3" | 60 | 50/200 |
| 051144-01332-6 | 3" | 80 | 50/200 |
| 051144-01331-9 | 3" | P100 | 50/200 |
| 051144-01330-2 | 3" | P120 | 50/200 |
| 051144-20891-3 | 5" | 36 | 50/250 |
| 051144-20890-6 | 5" | 40 | 50/250 |
| 051144-20889-0 | 5" | 50 | 50/250 |
| 051144-20888-3 | 5" | 60 | 50/250 |
| 051144-20887-6 | 5" | 80 | 50/250 |
| 051144-20886-9 | 5" | P100 | 50/250 |
| 051144-20885-2 | 5" | P120 | 50/250 |
| 051144-20884-5 | 5" | P150 | 50/250 |
| 051144-20883-8 | 5" | P180 | 50/250 |
| 051144-20881-4 | 5" | P240 | 50/250 |
| 051144-21639-0 | 6" | 36 | 50/250 |
| 051144-21731-1 | 6" | 40 | 50/250 |
| 051144-20879-1 | 6" | 50 | 50/250 |
| 051144-20878-4 | 6" | 60 | 50/250 |
| 051144-20877-7 | 6" | 80 | 50/250 |
| 051144-20876-0 | 6" | P100 | 50/250 |
| 051144-21497-6 | 6" | P120 | 50/250 |
| 051144-20874-6 | 8" | 36 | 50/250 |
| 051144-20873-9 | 8" | 40 | 50/250 |
| 051144-20871-5 | 8" | 60 | 50/250 |
| 051144-20870-8 | 8" | 80 | 50/250 |
| 051144-20868-5 | 8" | P120 | 50/250 |

3M™ PSA Cloth Disc 348D (cont.)

| UPC | Diameter | Grade | Min./Case |
|----------------|----------|-------|-----------|
| 051144-88906-8 | 12" | 36 | 10 |
| 051144-88905-1 | 12" | 40 | 10 |
| 051144-88904-4 | 12" | 50 | 10 |
| 051144-88903-7 | 12" | 60 | 10 |
| 051144-88902-0 | 12" | 80 | 10 |
| 051144-88901-3 | 12" | P100 | 10 |
| 051144-88890-0 | 16" | 36 | 10 |
| 051144-88889-4 | 16" | 40 | 10 |
| 051144-88887-0 | 16" | 60 | 10 |
| 051144-88886-3 | 16" | 80 | 10 |
| 051144-88882-5 | 18" | 36 | 10 |
| 051144-88880-1 | 18" | 60 | 10 |
| 051144-88878-8 | 20" | 36 | 10 |
| 051144-88877-1 | 20" | 40 | 10 |
| 051144-88876-4 | 20" | 50 | 10 |
| 051144-88875-7 | 20" | 60 | 10 |
| 051144-88874-0 | 20" | 80 | 10 |
| 051144-20802-9 | 24" | 36 | 10 |
| 051144-20801-2 | 24" | 40 | 10 |
| 051144-20798-5 | 24" | 80 | 10 |

3M™ PSA Disc 777F

- 3M ceramic aluminum oxide blend abrasive grain on a polyester cloth backing
- Heavy-duty YF wt. backing provides great strength and flexibility
- Provides long life and fast cut on multiple surfaces
- Includes a grinding aid for cooler running



| UPC | Diameter | Grade | Qty./Case |
|----------------------|----------|-------|-----------|
| Cloth Backing | | | |
| 051144-88869-6 | 12" | 36 | 10 |
| 051144-88873-3 | 12" | 40 | 10 |
| 051144-88872-6 | 12" | 50 | 10 |
| 051144-88871-9 | 12" | 60 | 10 |
| 051144-88870-2 | 12" | 80 | 10 |