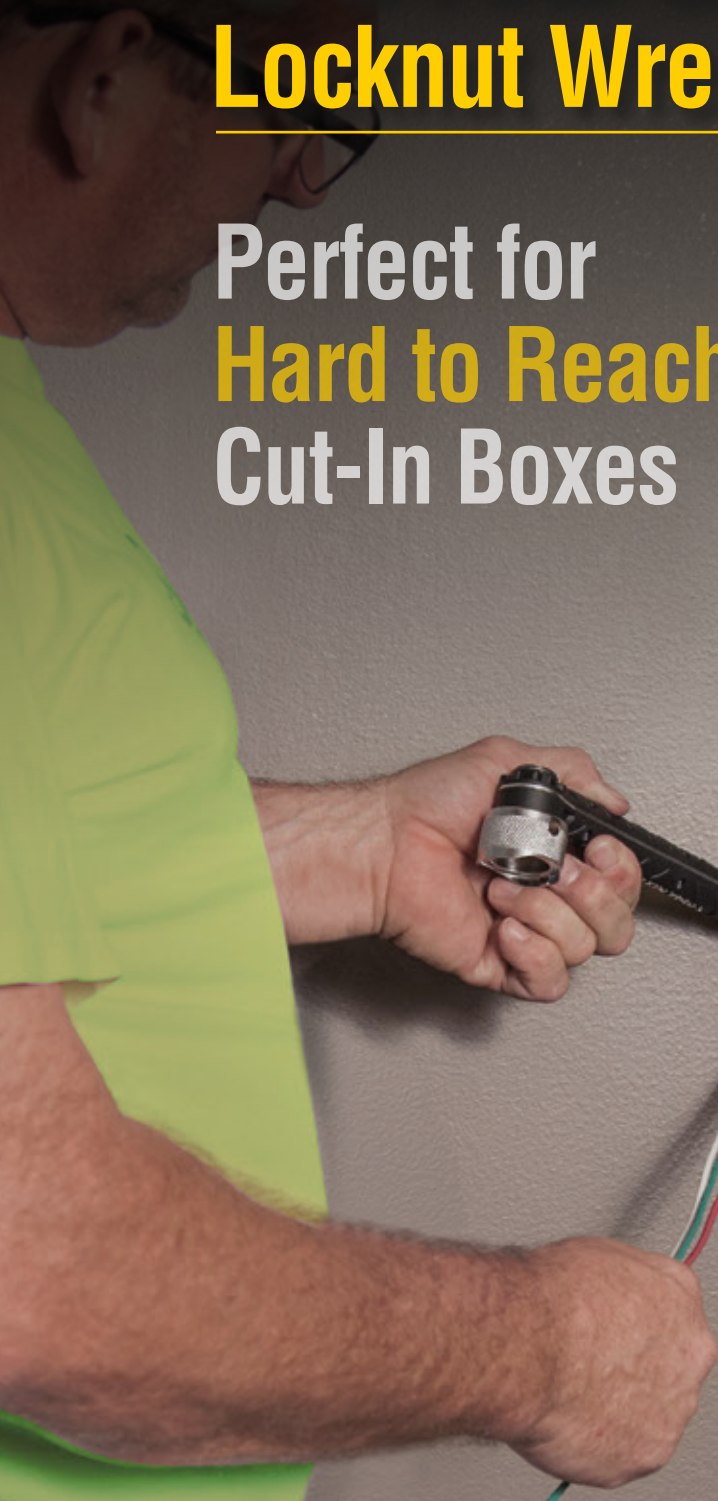


CONDUIT Locknut Wrench

Perfect for
Hard to Reach
Cut-In Boxes



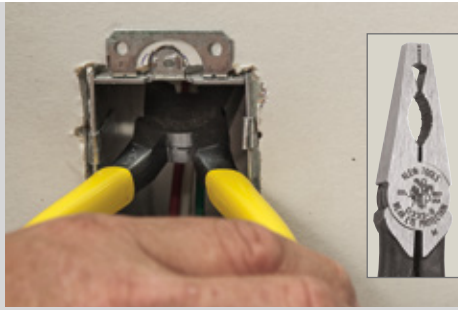
**KLEIN
TOOLS** 
For Professionals... Since 1857™

PROBLEM:

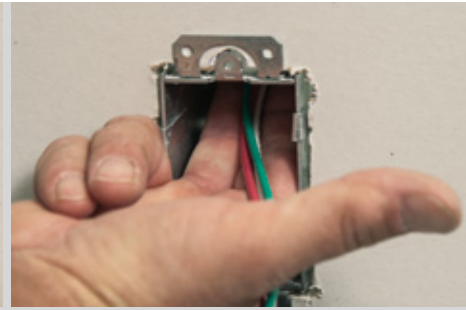
Many cut-in boxes are hard to reach. Traditional methods to tighten or loosen don't always work.



Screwdriver and hammer occupy both hands



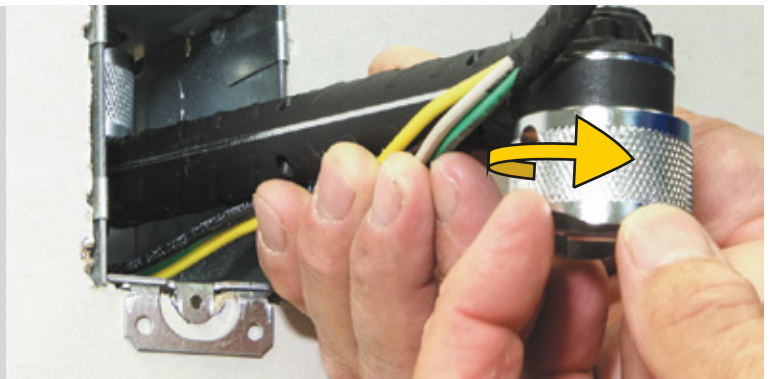
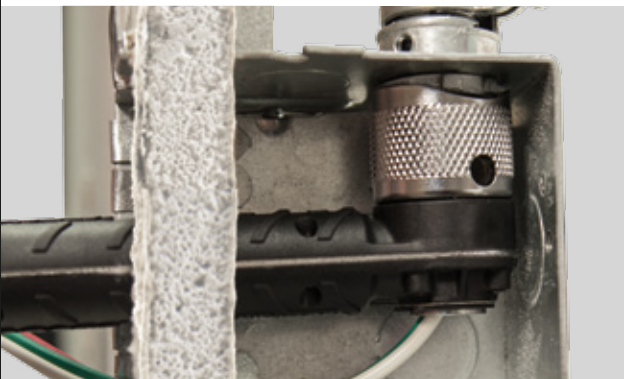
Limited lateral movement (using D338-8)



Boxes too deep for fingers

SOLUTION:

Turn a complicated operation into an easy two hand task.



Eliminates need for lateral tool movement

Cat. No.	UPC 0-92644+	Description
56999	56999-9	Conduit Locknut Wrench



KLEIN TOOLS
EST. 1857
For Professionals... Since 1857™

See our complete line of Wire Pulling & Conduit Tools
www.kleintools.com



© 2015 Klein Tools, Inc.
Lincolnshire, IL 60069
96402 Rev. 10/15 A