

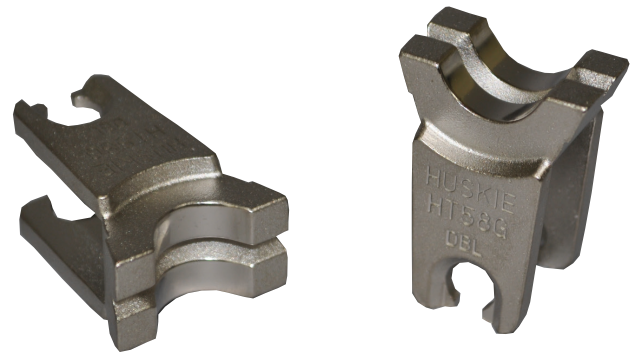


# HT58-SERIES

Equivalent to Burndy "W" Type Dies for 4-6 Ton Tools

HUSKIE	BURNDY Equivalent	HUSKIE	BURNDY Equivalent
HT58AE	W-K840	HT58DE	W-236
HT58BX	W-161	HT58DG	W-238
HT58BZ	W-162	HT58DH	W-239
HT58CB	W-163	HT58DK	W-241
HT58CD	W-164	HT58DM	W-243
HT58CE	W-165	HT58DP	W-245
HT58CF	W-166	HT58DT	W-247
HT58CG	W-167	HT58DV	W-248
HT58CM	W-171	HT58DW	W-249
HT58G	W-BG	HT58DY	W-251
HT58J	W-C	HT58KA	W-687
HT58AK	W-O	HT58KH	W-702
HT58CUT	CUTTER	HT58AF	W-L
		HT58K	WKK

HUSKIE	BURNDY Equivalent
HT58AW	W-2CRT
HT58AU	W-4CRT
HT58AT	W-5CRT
HT58AY	W-25RT
HT58AZ	W-26RT
HT58BA	W-27RT
HT58BC	W-28RT
HT58BE	W-29RT
HT58BF	W-30RT
HT58BJ	W-31RT
HT58BK	W-32RT
HT58BL	W-34RT



## Features

- Fits All Existing Tools Accepting "W" Type Dies
- Marked with Huskie and Equivalent Burndy "W" Die Number
- Nickel Plated

Huskie 6 Ton Die	Burndy 6 Ton Die	Nicopress
HT58BX	W-161	J
HT58BZ	W-162	M & P
HT58CB	W-1171	T
HT58CM	W-163	X

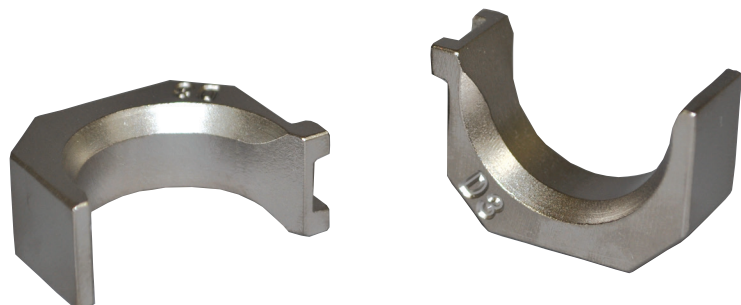
HUSKIE	CSA Equivalent
HT58PA	CSA-20
HT58PB	CSA-22
HT58PC	CSA-24

# HT-SERIES

Equivalent to Kearney "O" Type Dies for 4-6 Ton Tools

HUSKIE	KEARNEY Equivalent	HUSKIE	KEARNEY Equivalent
HT-B	B	HT-510	510 (HEX)
HT-D	D	HT-635	635 (HEX)
HT-D3	D3	HT-747	747 (HEX)
HT-J	J	HT-316	3/16
HT-K	K	HT-14	1/4
HT-O	O	HT-516	5/16
HT-P	P	HT-38	3/8
HT-T	T	HT-12	1/2
HT-737	737	HT-916	9/16
HT-781	781	HT-1932	19/32
HT-840	840	HT-58-1	5/8-1
HT-845	845	HT-1116	11/16

HUSKIE	CSA Equivalent
HTCSA-20	CSA-20
HTCSA-22	CSA-22
HTCSA-24	CSA-24



## Features

- Fits All Existing Tools Accepting "O" Type Dies
- Stamped with Kearney Die Size
- Nickel Plated