

# Product data sheet

Specifications

SQUARE D

Green Premium™



Safety switch, heavy duty, fusible, 60A, 4 wire, 3 pole, 1 neutral, 50hp, 600VAC/DC, NEMA 3R, bolt on hub provision

H362NRB

! Discontinued

! Discontinued on: Jan 31, 2024

Product availability: Stock - Normally stocked in distribution facility

## Main

Product	Single Throw Safety Switch
Duty Rating	Heavy duty
Device Application	Heavy application
Disconnect Type	Fusible disconnect
Factory Installed Neutral	Neutral (factory installed)
Phase	3 phase
Number Of Poles	3
Current Rating	60 A
Voltage Rating	600 V AC/DC
Enclosure Rating	NEMA 3R galvanized steel
Motor Power Hp	15 hp at 480 V AC 50-60 Hz for 3 phase motors 30 hp at 480 V AC 50-60 Hz for 3 phase motors 15 hp at 600 V AC 50-60 Hz for 3 phase motors 50 hp at 600 V AC 50-60 Hz for 3 phase motors 30 hp at 600 V DC

## Complementary

Short-Circuit Current	10 kA for H or K 200 kA for R or J
Fuse Type	H or K R or J
Mounting Type	Surface
Electrical Connection	Lugs
Wiring Configuration	4-wire (3PH + N)
Wire Size	AWG 14...AWG 3 copper AWG 12...AWG 3 aluminium
Tightening Torque	50 lbf.in (5.65 N.m) (AWG 3) 45 lbf.in (5.08 N.m) (AWG 6...AWG 4) 40 lbf.in (4.52 N.m) 0.01 in <sup>2</sup> (8.367 mm <sup>2</sup> ) (AWG 8) 50 lbf.in (5.65 N.m) 0.00...0.01 in <sup>2</sup> (2.06...5.261 mm <sup>2</sup> ) (AWG 14...AWG 10)
Depth	6.38 in (162.05 mm)
Width	10.5 in (266.70 mm)
Height	17.5 in (444.50 mm)

Price is "List Price" and may be subject to a trade discount – check with your local distributor or retailer for actual price.

---

Net Weight	17.64 lb(US) (8 kg)
------------	---------------------

## Environment

---

Certifications	UL listed file E2875
----------------	----------------------

## Ordering and shipping details

---

Category	US10DE100009
----------	--------------

---

Discount Schedule	0DE1
-------------------	------

---

Gtin	785901122494
------	--------------

---

Returnability	Yes
---------------	-----

---

Country Of Origin	US
-------------------	----

## Packing Units

---

Unit Type Of Package 1	PCE
------------------------	-----

---

Number Of Units In Package 1	1
------------------------------	---

---

Package 1 Height	7.50 in (19.05 cm)
------------------	--------------------

---

Package 1 Width	10.70 in (27.178 cm)
-----------------	----------------------

---

Package 1 Length	20.00 in (50.8 cm)
------------------	--------------------

---

Package 1 Weight	15.35 lb(US) (6.963 kg)
------------------	-------------------------

---

Unit Type Of Package 2	PAL
------------------------	-----

---

Number Of Units In Package 2	40
------------------------------	----

---

Package 2 Height	39.50 in (100.33 cm)
------------------	----------------------

---

Package 2 Width	40.00 in (101.6 cm)
-----------------	---------------------

---

Package 2 Length	48.00 in (121.92 cm)
------------------	----------------------

---

Package 2 Weight	674.00 lb(US) (305.721 kg)
------------------	----------------------------

## Contractual warranty

---

Warranty	18 months
----------	-----------

## Sustainability

**Green Premium™ label** is Schneider Electric's commitment to delivering products with best-in-class environmental performance. Green Premium promises compliance with the latest regulations, transparency on environmental impacts, as well as circular and low-CO<sub>2</sub> products.

**Guide to assessing product sustainability** is a white paper that clarifies global eco-label standards and how to interpret environmental declarations.

[Learn more about Green Premium >](#)

[Guide to assess a product's sustainability >](#)



Transparency RoHS/REACH

## Well-being performance

Mercury Free

Rohs Exemption Information Yes

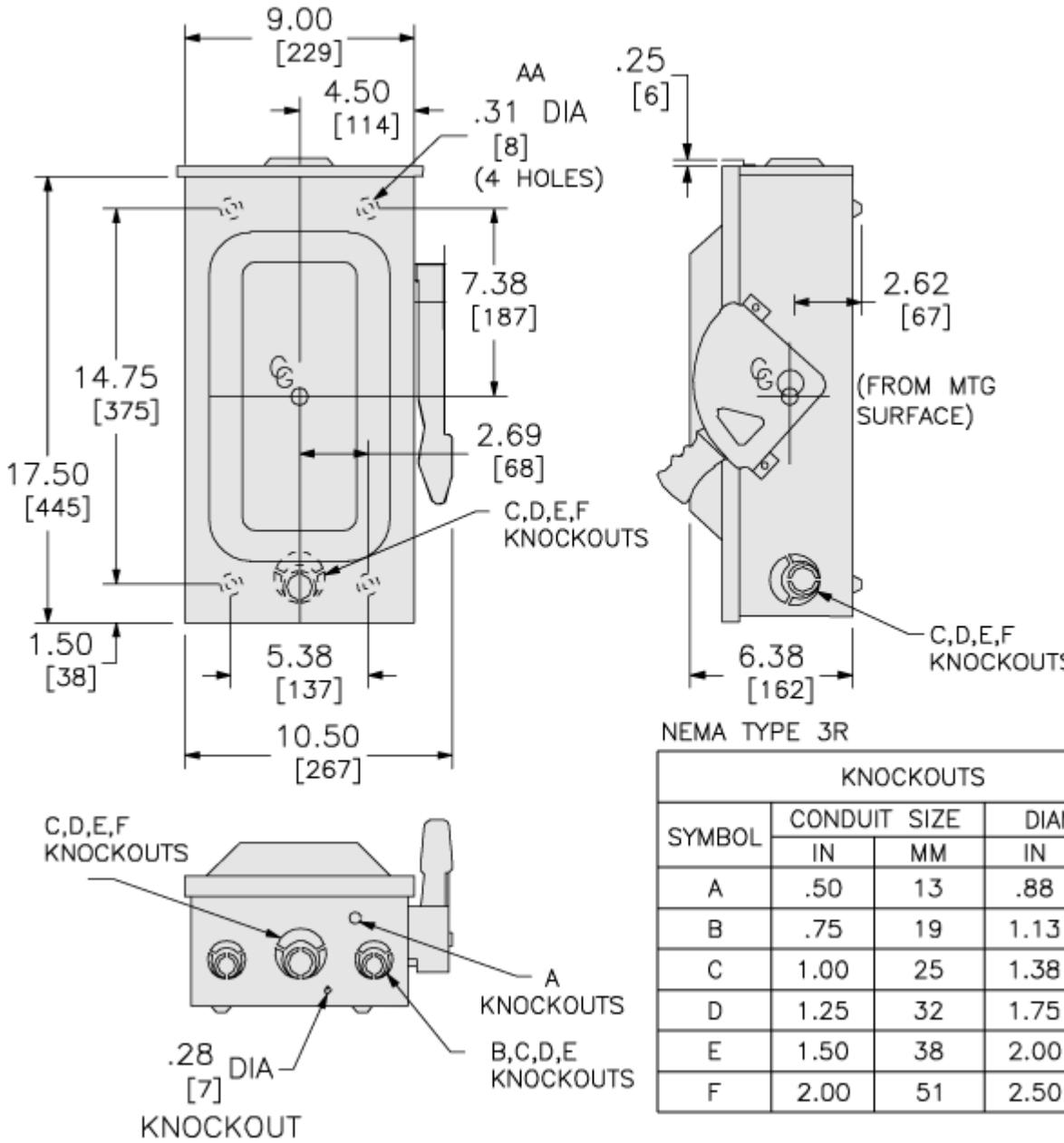
Pvc Free

## Certifications & Standards

Reach Regulation	<a href="#">REACH Declaration</a>
Eu Rohs Directive	Compliant with Exemptions
China Rohs Regulation	<a href="#">China RoHS declaration</a> Product out of China RoHS scope. Substance declaration for your information.
Environmental Disclosure	<a href="#">Product Environmental Profile</a>
Circularity Profile	No need of specific recycling operations
California Proposition 65	WARNING: This product can expose you to chemicals including: Lead and lead compounds, which is known to the State of California to cause cancer and birth defects or other reproductive harm. For more information go to <a href="http://www.P65Warnings.ca.gov">www.P65Warnings.ca.gov</a>

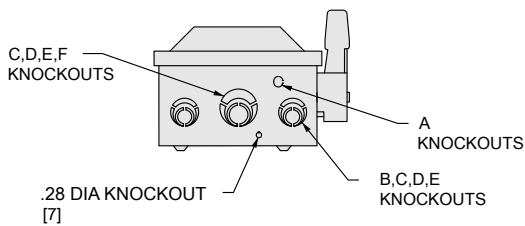
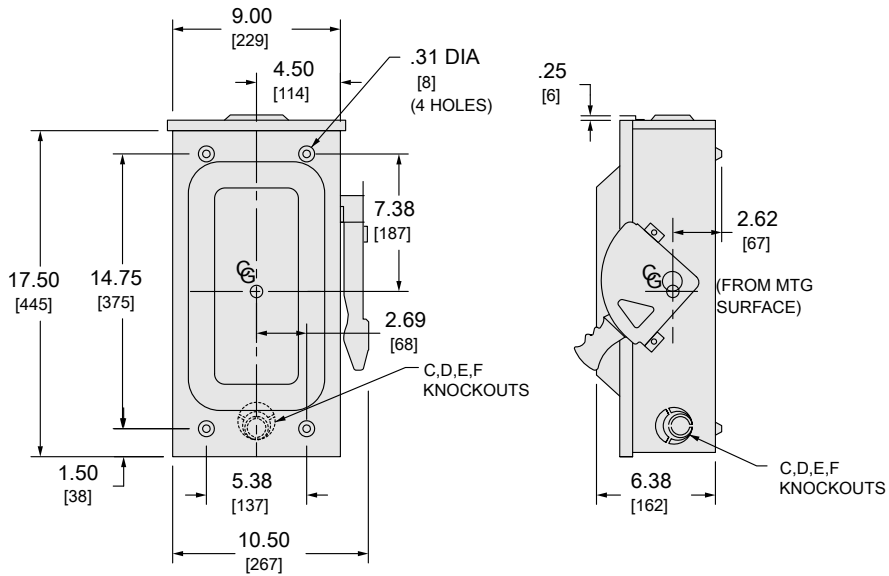
Dimensions Drawings

Approximate Dimensions



Technical illustration

Dimensions



in.  
[mm]

NEMA TYPE 3R

H362RB  
H362NRB  
HU362RB

SYMBOL	CONDUIT SIZE		DIAMETER	
	IN	MM	IN	MM
A	.50	13	.88	22
B	.75	19	1.13	29
C	1.00	25	1.38	35
D	1.25	32	1.75	45
E	1.50	38	2.00	51
F	2.00	51	2.50	64

NEMA TYPE 3R SWITCHES HAVE PROVISIONS FOR MAXIMUM 2.50/[64] BOLT-ON B-HUB.

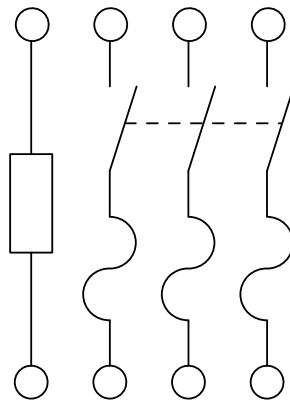
WHEN MOUNTING THESE SWITCHES, ALLOW 4.00/[102] MIN. CLEARANCE BETWEEN ENCLOSURES FOR OPENING OF SIDE HINGED DOOR.

ALL DIMENSIONS ARE APPROXIMATE.  
REFER TO TECHNICAL DRAWINGS AND DOCUMENTATION

Technical illustration

Wiring diagram

FUSIBLE



H362N  
H362NRB