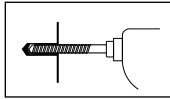
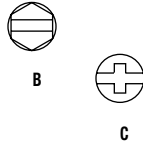
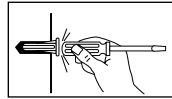


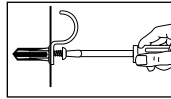
Plastic Conical Anchors



1. Drill hole full length of anchor or 1/8" deeper.



2. Tap anchor into hole flush with surface.



3. Insert screw through fixture into plastic plug and tighten.

- Light-duty, multi-size anchor for use in concrete, block, tile and brick.
- Use with sheet metal, wood and lag screws.
- Has collar for hollow materials.
- Moisture and chemical resistant, for indoor/outdoor use.
- Anchor kits include 100 anchors, 100 screws and one masonry bit.

ANCHORS ONLY

| CAT./ UPC NO. | USE WITH SCREW SIZES | REQUIRED HOLE SIZE | QTY. PER BOX | WEIGHT | |
|------------------|-------------------------|-----------------------|-----------------|--------|----|
| | | | | LBS. | kg |
| 84003 | #6 - #8 | 3/16" | 100 | .2 | .1 |
| 84006 | #10, #12 | 1/4" | 100 | .2 | .1 |

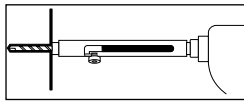
ANCHOR KITS

| CAT./ UPC NO. | ANCHOR SIZE | SCREW | | BIT SIZE | WEIGHT | |
|------------------|----------------|----------|------|-------------|--------|----|
| | | SIZE | TYPE | | LBS. | kg |
| 84009 | #6, #8 | #8 x 1" | C | 3/16" | .8 | .4 |
| 84012 | #10, #12 | #10 x 1" | C | 1/4" | 1 | .5 |
| 84015 | #10, #12 | #12 x 1" | C | 1/4" | 1.4 | .6 |
| 84019 | #10, #12 | #10 x 1" | B | 1/4" | 1.1 | .5 |

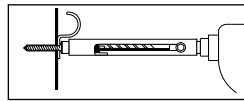
Masonry Screw Anchors



Masonry Screw Anchors must be used with Greenlee masonry screw drill bits, numbers 84484 and 84487, which are a special size to insure secure thread engagement. Standard masonry bit size holes will not provide proper contact with screw threads and may cause masonry anchor screws to pull out.



1. Use set Tool with bit in drilling position to drill hole in surface.



2. Retract bit, insert masonry screw into socket head of tool and drive screw into hole.

- A safe, secure, steel fastener that taps concrete and eliminates the need for concrete inserts with their alignment problems.
- Use with Greenlee masonry drill set tool.
- Use in concrete, block and brick.
- Quick and easy two-step installation, saves time.
- Made in USA.

MASONRY SCREW ANCHORS – EACH BOX OF 100 INCLUDES 1 BIT

| CAT./ UPC NO. | SIZE | MATERIAL CONCRETE 3000 PSI | | QTY. PER BOX | WT. | |
|------------------|---------------|----------------------------|--------------|-----------------|------|-----|
| | | MIN. EMBEDMENT | PULLOUT LBS. | | LBS. | kg |
| 84469 | 1/4" x 1" | 3/4" | 1180 | 100 | 1.2 | .5 |
| 84472 | 1/4" x 1-1/4" | 3/4" | 1180 | 100 | 1.4 | .6 |
| 84475 | 1/4" x 1-1/2" | 1-1/4" | 1800 | 100 | 1.6 | .7 |
| 84478 | 1/4" x 2" | 1-1/4" | 1800 | 100 | 1.8 | .8 |
| 84481 | 1/4" x 2-1/2" | 1-1/4" | 1800 | 100 | 2.1 | 1.0 |

INSTALLATION TOOLS

| CAT./ UPC NO. | DESCRIPTION | QTY. PER BOX | WT. | |
|------------------|--|--------------------|------|----|
| | | | LBS. | kg |
| 84466 | Masonry Screw Drill Set Tool with 84484 Bit | 1 | .4 | .2 |
| 84484 | 3-1/2" Masonry Screw Drill Bit – for use with 1" to 1-1/2" long screws | 1 | | |

NOTE: For use in lightweight, hollow core concrete block, minimum embedment 1-3/8", pullout 715 lbs. Due to the variance in make-up of cement block, values will vary. It is suggested that the anchor be tested in specific material being used before installing fixtures.

MASONRY SCREW DRILL SET KIT

| CAT./ UPC NO. | DESCRIPTION | MATERIAL CONCRETE 3000 PSI | | QTY. PER BOX | WT. | |
|------------------|---|----------------------------|--------------|--------------------|------|----|
| | | MIN. EMBEDMENT | PULLOUT LBS. | | LBS. | kg |
| 84463 | Masonry Screw Drill Set Kit Includes: | 3/4" | 1180 | 1 | 1.6 | .7 |
| 84469 | 50 – 1/4" x 1" Masonry Screws | | | | | |
| 84472 | 50 – 1/4" x 1-1/4" Masonry Screws | | | | | |
| 84466 | 1 – Masonry Screw Drill Set Tool with 84484 Bit | | | | | |

Small Jobs – Use special Greenlee masonry screw drill bit for holes. Screw can be installed with 5/16" wrench, nut driver or socket with ratchet.

Large Jobs – Use the special Greenlee Masonry Screw Drill Set Tool in kit with 3/8" or larger electric drill for drilling holes and screw installation.