



# SPECIALTY TOOLS Alnico Magnets



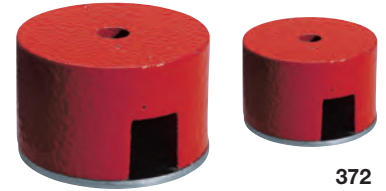
Aluminum, nickel and cobalt alloy make General's Alnico line of magnets strong and permanent. The strong magnetic pull of the Alnico Magnets make it perfect for lifting, holding, sorting, clamping or

retrieving steel or iron parts. Alnico Magnets will retain their magnetic force indefinitely. Removable keepers insure long life and optimum performance.

## BUTTON TYPE ALNICO MAGNETS

- Button shaped magnet has almost unlimited applications
- Retrieves screws and steel parts
- Center hole on top of magnet for easy fastening

UPC	NO.	DIA.	HT.	PULL	CORED HOLE
42073 2	<b>372A</b>	1/2"	3/8"	1-1/2 lbs.	1/8"
42076 3	<b>372B</b>	3/4"	1/2"	4 lbs.	1/8"
42079 4	<b>372C</b>	1"	5/8"	6-1/2 lbs.	3/16"
42082 4	<b>372D</b>	1-1/4"	3/4"	14 lbs.	3/16"
42085 5	<b>372E</b>	1-1/2"	7/8"	18-1/2 lbs.	1/4"

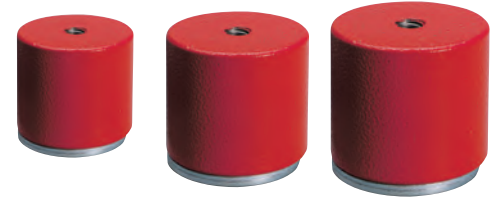


372

## POT TYPE ALNICO MAGNETS

- Unique combination of strong magnet with insulating ring gives this magnet the superior holding power of larger magnets
- 1/4" diameter x 20 threads-per-inch hole for attaching to fixtures and machines

UPC	NO.	DIA.	PULL	WT.	HT.
42093 0	<b>374A</b>	11/16"	6 lbs.	6 oz.	5/8"
42096 1	<b>374B</b>	13/16"	10 lbs.	6 oz.	3/4"
42102 9	<b>374C</b>	1-1/16"	18 lbs.	12 oz.	1"
42105 0	<b>374D</b>	1-3/8"	35 lbs.	24 oz.	1-3/16"

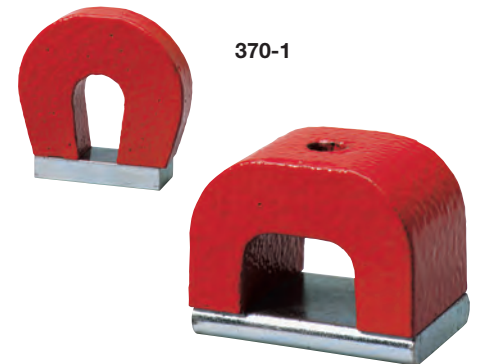


374

## POWER ALNICO MAGNETS

- Strong magnetic pull for lifting, holding, sorting, clamping or retrieving steel or iron parts
- Hole in top of magnet for attaching conveyors, racks, and welding jigs

UPC	NO.	SIZE OZ.	APPROX. PULL LBS.	WIDTH IN.	HT. IN.	DEPTH IN.	POLE WIDTH IN.	OPENING BETWEEN POLES, IN.	CORED HOLE	OZ. WEIGHT EACH WITH KEEPER
42041 1	<b>370-1</b>	.8	8	1-1/8"	1"	5/16"	5/16"	1/4"	—	1
42044 2	<b>370-2</b>	2	13	1-1/8"	3/4"	3/4"	1/4"	9/16"	3/16"	3
42050 3	<b>370-4</b>	4	22	1-1/2"	1"	1"	5/16"	3/4"	3/16"	5
42053 4	<b>370-6</b>	6	30	1-3/4"	1-1/8"	1-1/8"	5/16"	7/8"	3/16"	8
42056 5	<b>370-8</b>	8	32	2-3/16"	1-13/16"	15/16"	1/2"	1-3/16"	3/16"	10
42061 9	<b>370-12</b>	12	42	2-5/8"	2-1/4"	15/16"	5/8"	1-3/8"	3/16"	15
42064 0	<b>370-16</b>	16	50	3"	2-1/2"	15/16"	3/4"	1-1/2"	3/16"	20
42067 1	<b>370-24</b>	24	70	2-1/2"	1-13/16"	1-7/8"	5/8"	1-3/8"	1/4"	28



370-1

370-2

## MAGNETIC ADJUSTABLE WELDING LINKS AND WELDING MAGNET

Aluminum, nickel and cobalt give General's adjustable welding blocks and welding magnet enough magnetic muscle to hold steel plates in position over a lifetime of high-heat operations

### WELDING MAGNET

- Welding, brazing, soldering
- Eliminates need for clamps or temporary fasteners

- Alnico magnets retain force indefinitely
- The welding magnet has the ability to hold steel plates at different angles - 90°, 75°, 45°, 60° and 30°

UPC	NO.	THICKNESS	PULL LBS.	WT. OZ.
42122 7	<b>377</b>	.468	50.0	9.0



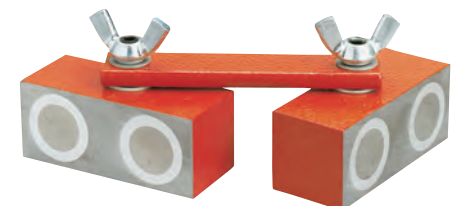
377

### MAGNETIC ADJUSTABLE WELDING LINK

- Welding, brazing, soldering
- Eliminates need for clamps or temporary fasteners

- Alnico magnets retain force indefinitely
- Wing nuts simplify angle adjustments

UPC	NO.	SIZE OF BLOCK	PULL PER BLOCK
42226 2	<b>375</b>	2.4" x 1" x 1"	25 lbs.



375