

---

# 9935 LogWare II – Temperature Calibration Software

---

## Highlights

### Turn any Fluke Calibration multi-channel thermometer readout into a real-time data logger with LogWare II.

- Collects real-time data using Fluke Calibration multi-channel readouts
- Calculates statistics and displays customizable graphs
- Allows user-selected start times, stop times and sample intervals
- Provides user-defined alarms that trip customizable alarm events
- Downloads data from thermometer's logs and memory using serial or IR port
- Includes tools to read/write probe coefficients and other thermometer settings

## Description

LogWare II lets you acquire data to your PC graphically and store it to text files. It also performs statistical functions automatically on each data set.

LogWare II was designed specifically for temperature data acquisition, although it can also collect resistance, voltage, ratio or other data as well. Set high and low alarm conditions, program a delayed start time, store a data log for a fixed number of readings or length of time, program the acquisition interval from 1 second to 60 hours, and let the software record the data you need the way you need it.

During a log session you can view the data for any or all data sets in a time/value trend graph while the data points are stored to files on your PC. Output the graph to your printer, view the test points from a spreadsheet, or review the pertinent log statistics once your log is completed. With LogWare II you can collect and view data from up to 96 probes simultaneously.

Store readings from your freezers, ovens, chambers, and anywhere else you need to record temperature, bring it back to your PC (through a standard serial cable or infrared dongle), and LogWare II will separate each log session into individual data sets. You don't have to load the text files into your spreadsheet and try to figure out which data points went with which log session. LogWare II does all that for you.

LogWare II also gives you the ability to make configuration changes to your readout. Program your probe coefficients, write calibration data to your meter, set password-protected parameters, and access other tools specific to your readout all from your PC.

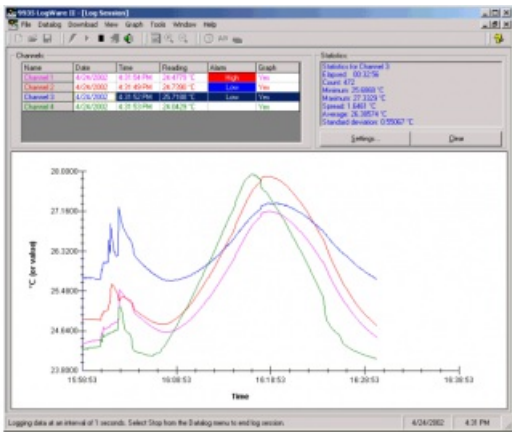
Get the most out of your readout with LogWare II.

## Models and Accessories

Model Name	Description
9935-S	LogWare II, Multi Channel, Single User
9935-M	LogWare II, Multi Channel, Multi User

### Accessories common to all models:

Accessory	Description
2383	USB to RS-232 Adapter



- 
- 
- 

©1995-2015 Fluke Corporation

Source URL: <http://us.flukecal.com/products/calibration-software/temperature-calibration-software/9935-logware-ii-%E2%80%93-temperature-calibra>