

▶ Model 350TR

Vibratone® Horns

Designed for routine signaling



Model 350 Vibratone® Horn produces a loud tone by the electro-mechanical vibration of a diaphragm. Its compact size, loud output and heavy-duty construction makes the 350 ideal for industrial and institutional signaling applications. It's popularly used for general alarming, start and dismissal noticing, coded paging and process control in noisy areas.

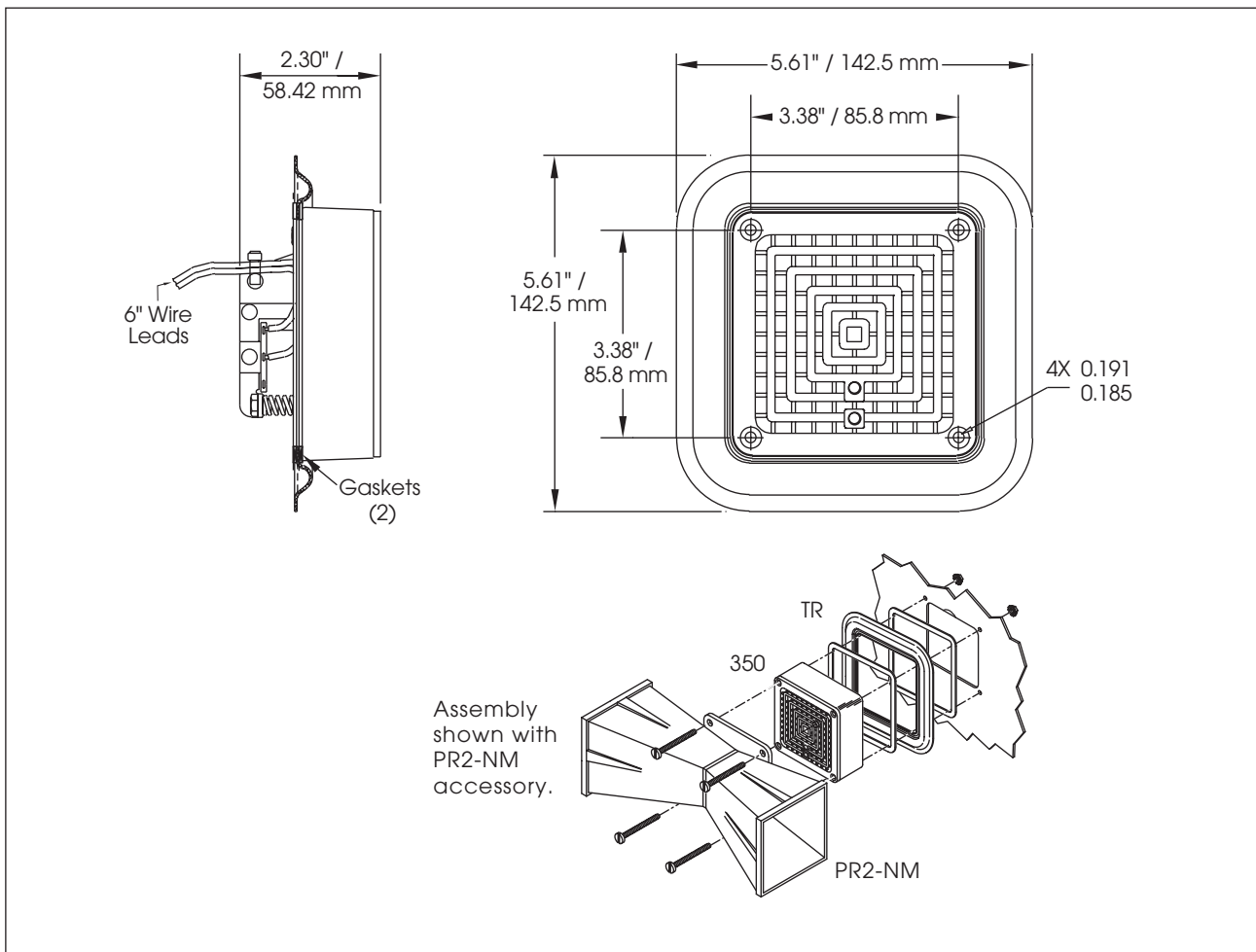
The 350TR offers the benefits of quick and simple surface mount installation as each horn is supplied with a gasketed trim ring. The 350TR is enclosed in a zinc die-cast housing and sealed with grey powder-coat paint with a stainless steel diaphragm.

F E A T U R E S

- Model 350TR – 24VAC and 120VAC
- Effective range of 200 feet
- User supplied coded or sustained tones
- Type 4X and Type 12 enclosure
- Model 350TR produces 100dBA at 10' (110dBA at 1m)
- UL and cUL Listed, CSA Certified and FM Approved

MODEL	VOLTAGE	OPERATING CURRENT	DECIBELS	
			@ 10'	1 M
350TR-024	24VAC 50/60Hz	0.90 amps	100	110
350TR-120	120VAC 50/60Hz	0.18 amps	100	110

Vibratone® Horns (350TR)



SPECIFICATIONS

Operating Temperature:	-65°F to 150°F	-54°C to 66°C
Net Weight:	1.7 lbs.	0.77 kg
Shipping Weight:	1.8 lbs.	0.81 kg
Height:	5.6"	142.2 mm
Width:	5.6"	142.2 mm
Depth:	2.5"	64.0 mm

REPLACEMENT PARTS

Description

Volume Control Kit
Coil, 120VAC
Coil, 240VAC

Part Number

K8435663B
KFC1516C
KFC1506C

HOW TO ORDER

350TR - **024**

TYPE
350TR

VOLTAGE
024 (24VAC)
120 (120VAC)

- Specify model number and voltage
- Specify Accessories:

PR2-NM – Non-metallic double projector directs sounds to both sides when attached to 350/450E models; ideal for use in hallways; 4" H x 11-1/2" W x 4" D; shipping weight 1 lb (0.45kg)

