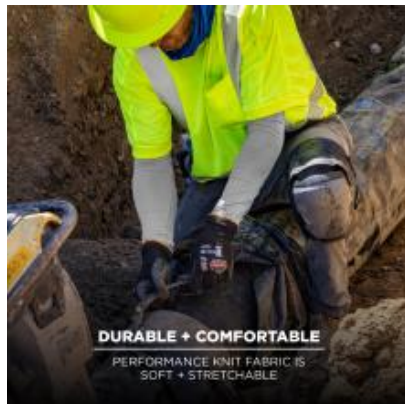




A KLEIN TOOLS COMPANY  
WWW.ERGODYNE.COM



## Chill-Its 6690 Cooling Arm Sleeves - Performance Knit (Pair)

### FEATURES

- PERFORMANCE KNIT FABRIC - Soft, durable, stretchable fabric for comfort
- INSTANT COOLING RELIEF - When wet, cooling is immediate and can last for hours
- MOISTURE-WICKING - When dry, will absorb sweat and wick moisture away
- SUN PROTECTION - UPF 50+ protection from harmful UV rays

### SPECIFICATIONS

<b>CLOSURE</b>	SLIDE ON
<b>CONSTRUCTION</b>	REFLECTIVE ACCENTS
<b>COOLING HOURS</b>	UP TO 2 HOURS
<b>COOLING TYPE</b>	WET EVAPORATIVE COOLING
<b>MATERIALS</b>	MICROFIBER, POLYESTER, SPANDEX
<b>PRODUCT FEATURES</b>	ANTI-ODOR, LIGHTWEIGHT, MACHINE WASHABLE, MOISTURE WICKING
<b>PRODUCT TYPE</b>	SLEEVES
<b>PROTECTION</b>	REFLECTIVE, UV/SUN PROTECTION, WARM TEMPERATURE PROTECTION
<b>RISK/INJURY</b>	HEAT STRESS, SUNBURN

### ORDER MULTIPLES

ORDER IN MULTIPLES OF:

1

See below for available item SKUs.



For more information and full size images, visit <https://www.ergodyne.com/chill-its-6690-cooling-arm-sleeves.html>

ITEMS			
ITEM #	COLOR	SIZE	
12183	BLUE	M	
12184	BLUE	L	
12185	BLUE	XL	
12186	BLUE	2XL	
12187	GRAY	M	
12188	GRAY	L	
12189	GRAY	XL	
12190	GRAY	2XL	

ITEMS			
ITEM #	COLOR	SIZE	
12283	LIME	M	
12284	LIME	L	
12285	LIME	XL	
12286	LIME	2XL	
12383	BLACK	M	
12384	BLACK	L	
12385	BLACK	XL	
12386	BLACK	2XL	