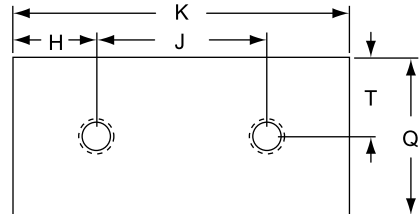
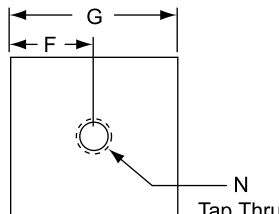
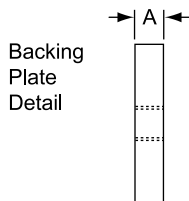
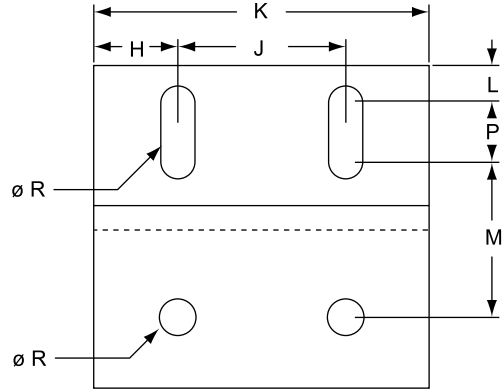
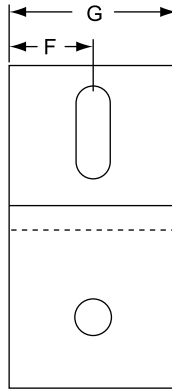
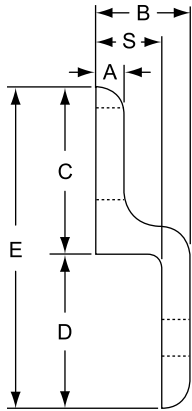
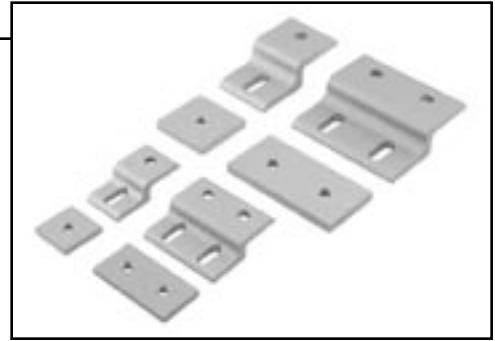


Single Mesh Panel Retainers



- 10 and 15 Series compatible
- Made of 6105-T5 clear anodized aluminum
- Strongest way to cost-effectively retain wire mesh or expanded metal panels
- Simplifies panel installation and removal
- Panel is secured when tightened between retainer and its threaded backing plate



2491 ☒
2436

2494 ☒
2435

Part No.	A	B	C	D	E	F	G	H	J	K	L	M	N	P	Q	R	S	T	Lbs.
2491 ☒	.188	.563	1.000	.938	1.938	.500	1.000	-	-	-	.250	.875	1/4-20	.375	1.000	.255	.375	.500	.055
2436	.250	.840	1.500	1.379	2.879	.750	1.500	-	-	-	.344	1.406	5/16-18	.500	1.500	.328	.590	.750	.175
2494 ☒	.188	.563	1.000	.938	1.938	-	-	.500	1.000	2.000	.250	.875	1/4-20	.375	1.000	.255	.375	.500	.110
2435	.250	.840	1.500	1.379	2.879	-	-	.750	1.500	3.000	.344	1.406	5/16-18	.500	1.500	.328	.590	.750	.350

☒ = 10 Series Compatible Part

Note: Refer to page 247 for recommended bolt assemblies

Single Mesh Retainers *continued*



Part No.	Lbs.	Size	Description
2490 ☒	.035	1.000	Mesh Retainer
2432	.120	1.500	Mesh Retainer
2493 ☒	.075	2.000	Mesh Retainer
2431	.240	3.000	Mesh Retainer
2491 ☒	.055	1.000	Mesh Retainer w/ Backing Plate
2436	.175	1.500	Mesh Retainer w/ Backing Plate
2494 ☒	.110	2.000	Mesh Retainer w/ Dbl Backing Plate
2435	.350	3.000	Mesh Retainer w/ Dbl Backing Plate
2492 ☒	.020	1.000	Backing Plate
2438	.055	1.500	Backing Plate
2495 ☒	.035	2.000	Dbl Backing Plate
2437	.110	3.000	Dbl Backing Plate

Recommended Bolt Assembly: (Mount to Profile)

Part No.	Retainer Part No.			
	2491	2436	2494	2435
3321 ☒	1	-	2	-
3320	-	1	-	2

Recommended Bolt Assembly: (Mount 12 / 16 Guage Wire)

Part No.	Retainer Part No.			
	2491	2436	2494	2435
3063 ☒	1	-	2	-
3114	-	1	-	2

☒ = 10 Series Compatible Part