

Dynacushion® and Dynaflex™ Wheels from Dynabrade

Pneumatic Wheels and Expander Wheels for All Applications

- Dynacushion® Wheels Adapt to Contour of Work Surface
- Heavy Duty with Light Weight
- Grind Aggressively with Dynaflex™ Expander Wheels



Dynacushion® Pneumatic Wheels



Dynacushion® is an inflatable rubber wheel designed to run on various Dynabrade finishing tools, sanders and grinders. When fitted with an abrasive belt and inflated to the desired firmness, the Dynacushion® wheel is ideal for countless grinding and finishing applications.

Because the Dynacushion® is inflatable, it has the unique ability to conform to the contours of the work piece. This places more abrasive material on the surface for faster, more consistent stock removal. The aggressiveness of the cutting action is easily controlled by adjusting the wheel's air pressure. Using the Dynacushion® helps to eliminate typical finishing problems such as gouging, wheel marks and "chatter."

The Dynacushion® supports coated abrasive and non-woven nylon belts for use on metal, wood, plastic, ceramics, fiberglass, composites and more. Choose from standard, heavy duty and serrated constructions, each providing an increasingly aggressive cut. A wide assortment of wheel widths and diameters is offered, for perfect match with corresponding abrasive belt sizes.

Dynacushion® Wheels are Available in a Variety of Different Styles

STANDARD CONSTRUCTION WHEELS

- For general finishing jobs.

HEAVY DUTY WHEELS

- When you need a more aggressive wheel for more stock removal.
- Extremely durable - when used properly wheel is very resistant to gouging.



HEAVY DUTY SERRATED WHEELS

- Our most aggressive wheel.
- Combination of cool running air-inflated wheel with quick cutting serrations.
- Heavy duty construction with a 1:1 land to groove ratio – 1/32" deep grooves.
- Serrations help flex abrasive – making it work harder for aggressive stock removal.



COMPOSITE HUB

- Molded; lightweight design.
- Available with standard construction rubber wheels only.



HEAVY DUTY ALUMINUM HUB

- Precision machined for balance run-out and thread quality.
- Easily replace rubber wheel.
- Available with standard, heavy duty and serrated wheel designs.



DYNABRADE ARBORS

- Mount pneumatic wheels, abrasive wheels, discs, sanding stars and other accessories.
- Mount to many Dynabrade and other manufacturers' portable tools.

Arbor P/N	Wheel Width	Tool's Male Spindle			Arbor Bore					Pictorial Reference
		3/8"-24	1/2"-20	5/8"-11	14 mm	1/2"	5/8"	1"	5/8"-11	
13014	up to 51 mm		✓		✓					2" Diameter Wheel Flanges and Spacers
13016	up to 2"		✓			✓				
13017	up to 2"		✓				✓			Pictorial Reference
13061	up to 3"	✓					✓	✓		
13071	up to 3"		✓				✓	✓		
13073	up to 3"			✓			✓	✓		
13074	up to 3"	✓	✓	✓			✓	✓		
13015	3-1/2"		✓						✓ (Thread)	

13074 ARBOR KIT

- Mounts pneumatic wheels, abrasive wheels, discs, sanding stars and other accessories to 3/8"-24, 1/2"-20 or 5/8"-11 male spindle tools.
- Also accepts accessories which have a 5/8" bore from 1/2" to 3" wide in 1/2" increments.



Dynacushion® Pneumatic Wheels (CONT'D)

2-1/4" DIAMETER X 3" WIDE

- Aluminum hub composition
- Standard and heavy duty rubber wheels
- 9,000 RPM maximum operating speed
- 1" maximum arbor spindle length
- 3" W x 7-3/8" L coated abrasive belts
- 3" W x 7-13/16" L non-woven nylon belts



5" DIAMETER X 3-1/2" WIDE

- Aluminum and composite hub compositions
- Standard and heavy duty rubber wheels
- 3,500 RPM maximum operating speed
- 2" minimum arbor spindle length
- 3-1/2" W x 15-1/2" L coated abrasive belts
- 3-1/2" W x 16-1/8" L non-woven nylon belts



3" DIAMETER X 2-1/4" WIDE

- Aluminum hub composition
- Standard, heavy duty and serrated rubber wheels
- 7,000 RPM maximum operating speed
- 2" minimum arbor spindle length
- 2-1/4" W x 9-3/4" L coated abrasive belts
- 2-1/4" W x 10-3/16" L non-woven nylon belts



5" DIAMETER X 7" WIDE

- Aluminum hub composition
- Standard and heavy duty rubber wheels
- 3,500 RPM maximum operating speed
- 2" minimum arbor spindle length
- 7" W x 15-1/2" L coated abrasive belts
- 7" W x 16-1/8" L non-woven nylon belts



3-1/4" DIAMETER X 3" WIDE

- Aluminum and composite hub compositions
- Standard straight wall and heavy duty straight wall rubber wheels
- 7,000 RPM maximum operating speed
- 2-3/8" minimum arbor spindle length
- 3" W x 10-11/16" L coated abrasive belts
- 3" W x 11-1/8" L non-woven nylon belts



6" DIAMETER X 1" WIDE

- Aluminum hub composition
- Standard rubber wheels
- 3,500 RPM maximum operating speed
- 2" minimum arbor spindle length
- 1" W x 19" L coated abrasive belts
- 1" W x 19-1/2" L non-woven nylon belts



3-1/4" DIAMETER X 7" WIDE

- Aluminum hub composition
- Standard rubber wheels
- 3,600 RPM maximum operating speed
- 2" maximum arbor spindle length
- 7" W x 10-11/16" L coated abrasive belts
- 7" W x 11-1/8" L non-woven nylon belts



6" DIAMETER X 2" WIDE

- Aluminum hub composition
- Standard rubber wheels
- 3,500 RPM maximum operating speed
- 2" minimum arbor spindle length
- 2" W x 19-1/4" L coated abrasive belts
- 2" W x 19-11/16" L non-woven nylon belts



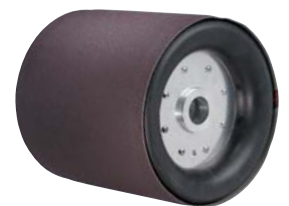
90 mm DIAMETER X 100 mm WIDE

- Aluminum and composite hub compositions
- Standard rubber wheels
- 7,000 RPM maximum operating speed
- 2-3/8" minimum arbor spindle length
- 100 mm W x 289 mm L coated abrasive belts
- 100 mm W x 303 mm L non-woven nylon belts



8-1/4" DIAMETER X 9" WIDE

- Aluminum hub composition
- Standard rubber wheels
- 1,800 RPM maximum operating speed
- 10-1/2" maximum arbor spindle length
- 9" W x 26-5/16" L coated abrasive belts
- 9" W x 26-1/2" L non-woven nylon belts



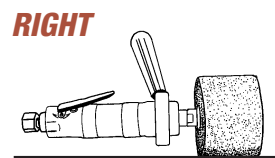
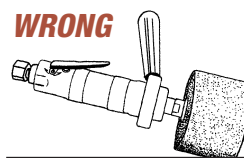
5" DIAMETER X 2-3/4" WIDE

- Aluminum and composite hub compositions
- Standard, heavy duty and serrated rubber wheels
- 3,500 RPM maximum operating speed
- 2" minimum arbor spindle length
- 2-3/4" W x 15-1/2" L coated abrasive belts
- 2-3/4" W x 16-1/8" L non-woven nylon belts



TECH TIP

Avoid tipping the pneumatic wheel when operating. Best results will be achieved when keeping the pneumatic wheel as flat on the surface as possible.



Dynacushion® Pneumatic Wheels (CONT'D)

5" DIAMETER x 2-3/4" WIDE

Part Number	Hub Composition	Rubber Wheel Type	Replacement Tire	Wheel Spindle Thread	Maximum RPM	Recommended Tool Speed (RPM)	Maximum Arbor Spindle Length	Coated Abrasive Belt Size (W x L)	Recommended Dynabrade Tool Models
92810	Aluminum	Standard	94482	1/2"-13 Female	3,500	1,800-3,400	2"	2-3/4" x 15-1/2"	N/A
92811	Aluminum	Standard	94482	5/8"-11 Female	3,500	1,800-3,400	2"	2-3/4" x 15-1/2"	13521, 13531, 13204, 13505, 13515
92812	Aluminum	Standard	94482	3/4" Bore	3,500	1,800-3,400	2"	2-3/4" x 15-1/2"	13400, 13450
92813	Aluminum	Heavy Duty	92653	1/2"-13 Female	3,500	1,800-3,400	2"	2-3/4" x 15-1/2"	N/A
92814	Aluminum	Heavy Duty	92653	5/8"-11 Female	3,500	1,800-3,400	2"	2-3/4" x 15-1/2"	13521, 13531, 13204, 13505, 13515
92815	Aluminum	Heavy Duty	92653	3/4" Bore	3,500	1,800-3,400	2"	2-3/4" x 15-1/2"	13400, 13450
92816	Aluminum	Heavy Duty, Serrated	92657	1/2"-13 Female	3,500	1,800-3,400	2"	2-3/4" x 15-1/2"	N/A
92817	Aluminum	Heavy Duty, Serrated	92657	5/8"-11 Female	3,500	1,800-3,400	2"	2-3/4" x 15-1/2"	13521, 13531, 13204, 13505, 13515
92818	Aluminum	Heavy Duty, Serrated	92657	3/4" Bore	3,500	1,800-3,400	2"	2-3/4" x 15-1/2"	13400, 13450
94490	Composite	Standard	94482	1/2" Bore	3,500	1,800-3,400	2"	2-3/4" x 15-1/2"	13201, 13502, 13512
94492	Composite	Standard	94482	5/8"-11 Female	3,500	1,800-3,400	2"	2-3/4" x 15-1/2"	13521, 13531, 13204, 13505, 13515
94493	Composite	Standard	94482	3/4" Bore	3,500	1,800-3,400	2"	2-3/4" x 15-1/2"	13400, 13450
94494	Composite	Standard	94482	5/8" Bore	3,500	1,800-3,400	2"	2-3/4" x 15-1/2"	13501, 13511, 13202, 13205, 13503, 13506, 13516

ADDITIONAL SPECIFICATIONS: Required Non-Woven Nylon Belt Size: 2-3/4" Wide x 16-1/8" Long

5" DIAMETER x 3-1/2" WIDE

Part Number	Hub Composition	Rubber Wheel Type	Replacement Tire	Wheel Spindle Thread	Maximum RPM	Recommended Tool Speed (RPM)	Maximum Arbor Spindle Length	Coated Abrasive Belt Size (W x L)	Recommended Dynabrade Tool Models
92800	Aluminum	Standard	94481	1/2"-13 Female	3,500	1,800-3,400	2"	3-1/2" x 15-1/2"	N/A
92801	Aluminum	Standard	94481	5/8"-11 Female	3,500	1,800-3,400	2"	3-1/2" x 15-1/2"	13521, 13531, 13204, 13505, 13515,
92802	Aluminum	Standard	94481	3/4" Bore	3,500	1,800-3,400	2"	3-1/2" x 15-1/2"	13400, 13450
92803	Aluminum	Standard	94481	M14 x 2	3,500	1,800-3,400	2"	3-1/2" x 15-1/2"	N/A
92804	Aluminum	Heavy Duty	92656	1/2"-13 Female	3,500	1,800-3,400	2"	3-1/2" x 15-1/2"	N/A
92805	Aluminum	Heavy Duty	92656	5/8"-11 Female	3,500	1,800-3,400	2"	3-1/2" x 15-1/2"	13521, 13531, 13204, 13505, 13515,
92806	Aluminum	Heavy Duty	92656	3/4" Bore	3,500	1,800-3,400	2"	3-1/2" x 15-1/2"	13400, 13450
94469	Composite	Standard	94481	1/2" Bore	3,500	1,800-3,400	2"	3-1/2" x 15-1/2"	13201, 13502, 13512,
94471	Composite	Standard	94481	5/8" Bore	3,500	1,800-3,400	2"	3-1/2" x 15-1/2"	13501, 13511, 13202, 13205, 13503, 13506, 13516
94472	Composite	Standard	94481	5/8"-11 Female	3,500	1,800-3,400	2"	3-1/2" x 15-1/2"	13521, 13531, 13204, 13505, 13515,
94473	Composite	Standard	94481	3/4" Bore	3,500	1,800-3,400	2"	3-1/2" x 15-1/2"	13400, 13450

ADDITIONAL SPECIFICATIONS: Required Non-Woven Nylon Belt Size: 3-1/2" Wide x 16-1/8" Long

5" DIAMETER x 3-1/2" WIDE

Part Number	Hub Composition	Rubber Wheel Type	Replacement Tire	Wheel Spindle Thread	Maximum RPM	Recommended Tool Speed (RPM)	Maximum Arbor Spindle Length	Coated Abrasive Belt Size (W x L)	Recommended Dynabrade Tool Models
92852	Aluminum	Standard	94437	3/4"-10 Female	3,500	1,800-3,400	2"	7" x 15-1/2"	Electric Pedestal
92853	Aluminum	Standard	94437	7/8"-9 Female	3,500	1,800-3,400	2"	7" x 15-1/2"	Electric Pedestal
92854	Aluminum	Heavy Duty	92658	5/8"-11 Female	3,500	1,800-3,400	2"	7" x 15-1/2"	65745, 65746, 65747
92855	Aluminum	Heavy Duty	92658	3/4"-10 Female	3,500	1,800-3,400	2"	7" x 15-1/2"	Electric Pedestal
92856	Aluminum	Heavy Duty	92658	7/8"-9 Female	3,500	1,800-3,400	2"	7" x 15-1/2"	Electric Pedestal
94436	Aluminum	Standard	94437	5/8"-11 Female	3,500	1,800-3,400	2"	7" x 15-1/2"	65745, 65746, 65747

ADDITIONAL SPECIFICATIONS: Required Non-Woven Nylon Belt Size: 7" Wide x 16-1/8" Long

6" DIAMETER x 1" WIDE

94474	Aluminum	Standard	94557	5/8"-11 Thread	3,500	1,500-3,400	2"	1" x 19"	13521, 13204, 13505, 65745, 65746, 65747
-------	----------	----------	-------	----------------	-------	-------------	----	----------	--

ADDITIONAL SPECIFICATIONS: Required Non-Woven Nylon Belt Size: 1" Wide x 19-1/2" Long

6" DIAMETER x 2" WIDE

92837	Aluminum	Standard	92659	5/8"-11 Thread	3,500	1,500-3,400	2"	2" x 19-1/4"	13521, 13204, 13505, 65745, 65746, 65747
-------	----------	----------	-------	----------------	-------	-------------	----	--------------	--

ADDITIONAL SPECIFICATIONS: Required Non-Woven Nylon Belt Size: 2" Wide x 19-11/16" Long

8-1/4" DIAMETER x 9" WIDE

94450	Aluminum	Standard	94451	1-1/4" Bore, Max 1-3/4"	1,800	1,750	10-1/2"	9" x 26-5/16"	65745, 65746, 65747
-------	----------	----------	-------	-------------------------	-------	-------	---------	---------------	---------------------

ADDITIONAL SPECIFICATIONS: Required Non-Woven Nylon Belt Size: 9" Wide x 26-1/2" Long