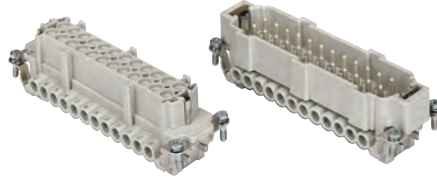


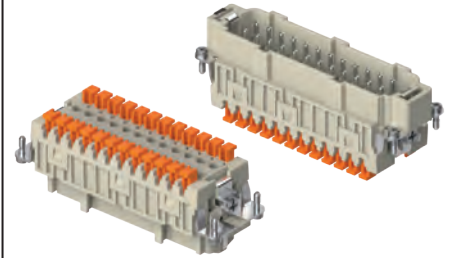
CNE CSH-SQUICH® 24 poles + ⊕ 16A - 500V

enclosures: size "104.27"	page:
C-TYPE IP65/IP66	412 - 423
C7 IP67, two levers	441 - 442
V-TYPE IP65/IP66, single lever	459 - 463
BIG hoods	472 - 473
T-TYPE IP65 insulating	486 - 487
T-TYPE / W IP66/IP69 insulating	492
HYGIENIC T-TYPE / H IP66/IP69	504
HYGIENIC T-TYPE / C IP66/IP69, -50 °C	509
W-TYPE for aggressive environments	524
E-Xtreme® corrosion proof	536 - 537, 545, 556 - 557
EMC	581
Central lever	612 - 614
LS-TYPE	624 - 625
IP68	644 - 647
panel supports: COB	page: 652 - 653

inserts, screw terminal connections

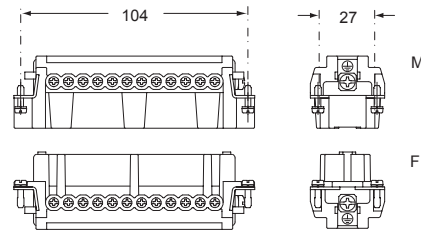


inserts, spring terminal connections without tools

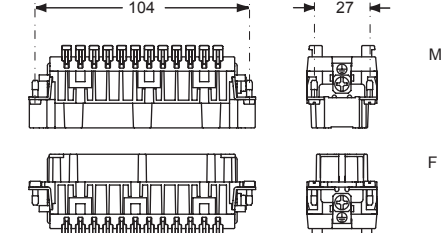
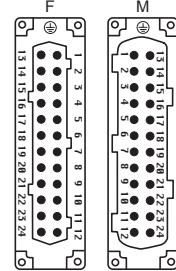


description	part No.	part No.
indirect, with plate ¹⁾ female inserts with female contacts male inserts with male contacts	CNEF 24 T CNEM 24 T	
direct, without plate ²⁾ female inserts with female contacts male inserts with male contacts	CNEF 24 TX CNEM 24 TX	
spring terminals with actuator button female inserts with female contacts male inserts with male contacts		CSHF 24 CSHM 24

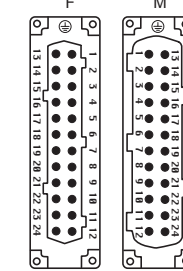
- characteristics according to EN 61984:
16A 500V 6kV 3
16A 400/690V 6kV 2
- cULus (UL for USA and Canada), certified
- rated voltage according to UL/CSA: 600V
- insulation resistance: ≥ 10 GΩ
- ambient temperature limit: -40 °C ... +125 °C
- made of self-extinguishing thermoplastic resin UL 94V-0
- mechanical life: ≥ 500 cycles
- contact resistance: ≤ 1 mΩ (CNE) - ≤ 3 mΩ (CSH)
- for max. current load see the connector inserts derating diagrams below; for more information see page 28



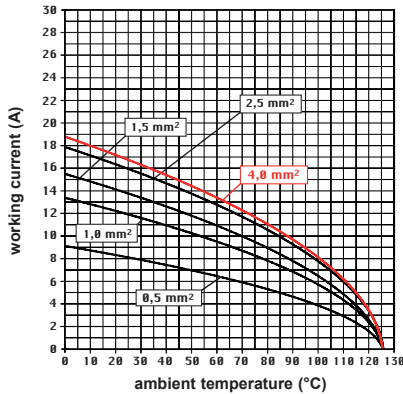
contacts side (front view)



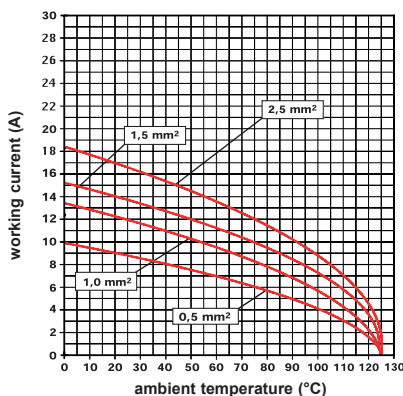
contacts side (front view)



CNE 24 poles connector inserts Maximum current load derating diagram



CSH 24 poles connector inserts Maximum current load derating diagram

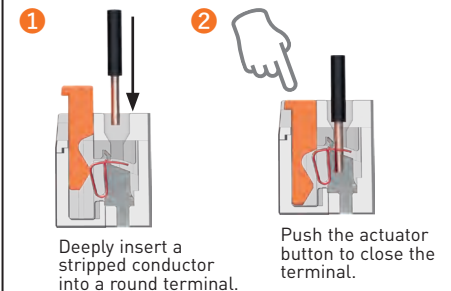


- inserts with plate for section conductors:
0,5 - 4 mm² - AWG 20 - 12
- inserts without plate for section conductors:
0,25 - 2,5 mm² - AWG 24 - 14
- conductors stripping length: 7 mm
- terminal screw torque: 0,5 Nm (4.4 lb.in), for more information see page 20 and 21

- inserts for connectors with the following sections:
0,14 - 2,5 mm² - AWG 26 - 14
- conductors stripping length: 9...11 mm

SQUICH®-spring connection technology

WIRING



¹⁾ for unprepared conductors



²⁾ for conductors with end sleeve ferrule

