

Cotterman®

COTTERMAN SERIES 1000 LADDERS are rigid, one piece, set-up, steel mobile ladder stands designed to meet or exceed OSHA standards. Safety is foremost with easy climbing angles, sturdy handrails, and large steps and top step of slip-resistant expanded metal. Caster assemblies are designed to secure the ladder to the floor when in use, and to permit easy rolling from job to job.

FEATURES:

- All tube members are large 1" O.D. smooth steel tubing.
- Climbing angles are 59°. Steps are 7" deep of durable, self-cleaning expanded metal. Top steps are 10", 20" or 30" deep.
- Spring loaded 2" casters are used on 1 to 4 step ladders permitting the ladder to roll freely when moved. The Cotterman Safe-Lock is used on 5 to 11 step ladders.
- Gray powder coat is the standard finish. Beige, dark brown, yellow, black, green, blue, red, white, orange and light gray are available.
- All Series 1000 ladders meet or exceed OSHA 1910.29, ANSI A14.7 standards with a 450 lb. load rating. Cal-OSHA models also available.



POWDER COATED TOUGH™

3 STEP LADDER
MODEL NO. 1003N1820

7 STEP WITH HANDRAILS
AND SAFE-LOCK
MODEL NO. 1007R2630

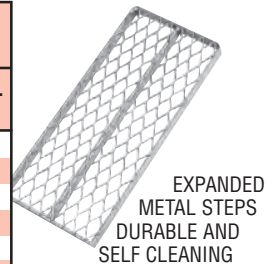
SET-UP

SERIES 1000

SET-UP STEEL SAFETY LADDERS

Larger Casters & Safe-Lock on 5 step & above • Swivel Brake Casters standard on 1-4 step.

DESCRIPTION: NO. OF STEPS INCL. TOP STEP	TOP STEP HEIGHT	OVERALL HEIGHT	18" WIDE AT TOP			26" WIDE AT TOP			32" WIDE AT TOP		
			MODEL NO.	BASE W"xL"	SHPG. WT.	MODEL NO.	BASE W"xL"	SHPG. WT.	MODEL NO.	BASE W"xL"	SHPG. WT.
1 STEP NO HANDRAILS	12"	12"	*1001N1818	18x16	14	*1001N2626	26x16	18	-	-	-
1 STEP WITH HANDRAILS	12"	16"	*1001G1818	18x16	14	*1001G2626	26x16	18	-	-	-
2 STEP NO HANDRAILS	20"	20"	*1002N1818	18x19	22	*1002N2626	26x19	32	-	-	-
2 STEP WITH HANDRAILS	20"	50"	*1002R1818	18x19	29	1002R2626	26x19	35	-	-	-
3 STEP NO HANDRAILS	30"	30"	*1003N1820	20x26	35	1003N2630	30x26	41	-	-	-
3 STEP WITH HANDRAILS	30"	60"	1003R1820	20x26	41	1003R2630	30x26	47	-	-	-
4 STEP NO HANDRAILS	40"	40"	1004N1820	20x31	45	1004N2630	30x31	51	**1004N3232	32x31	64
4 STEP WITH HANDRAILS	40"	70"	1004R1820	20x31	53	1004R2630	30x31	59	**1004R3232	32x31	72
5 STEP WITH HANDRAILS	50"	80"	1005R1820	20x40	82	1005R2630	30x40	94	**1005R3232	32x40	113
6 STEP WITH HANDRAILS	60"	90"	1006R1824	24x46	98	1006R2630	30x46	109	1006R3232	32x46	132
7 STEP WITH HANDRAILS	70"	100"	1007R1824	24x53	107	1007R2630	30x53	119	1007R3232	32x53	140
8 STEP WITH HANDRAILS	80"	110"	1008R1824	24x58	120	1008R2632	32x58	152	1008R3232	32x58	178
9 STEP WITH HANDRAILS	90"	120"	1009R1824	24x65	145	1009R2632	32x65	162	1009R3232	32x65	187
10 STEP WITH HANDRAILS	100"	130"	-	-	-	1010R2632	32x72	175	1010R3232	32x72	197
11 STEP WITH HANDRAILS	110"	140"	-	-	-	1011R2632	32x78	181	1011R3232	32x78	227

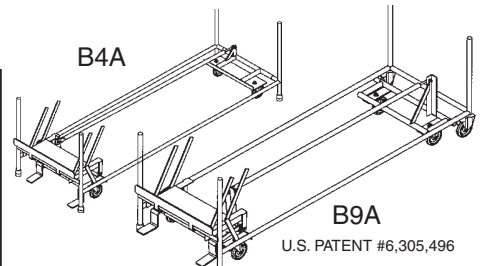


*Ships via UPS

NOTE: 10 and 11 step ladders are not available with optional 20" or 30" deep top step, please order 1500 series ladder.

**4 and 5 step 32" wide (with deep top step only) ladders require B4 safe-lock option.

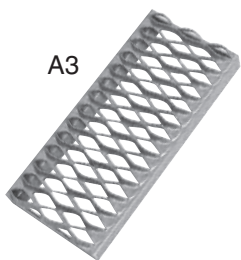
INCREASES LADDER MANEUVERABILITY TURNS CORNERS EASIER



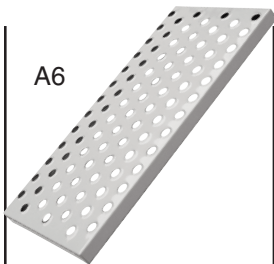
OPTION B4A FOUR WHEEL DUAL END SAFE-LOCK: This safe-lock uses rear mounted swivel casters which allow the ladder to be more maneuverable in confined spaces. Optional on series 1000. 5 to 8 step.

OPTION B9A SIX WHEEL SAFE-LOCK FOR LARGER LADDERS: This safe-lock system adds another pair of swivel casters to allow easy movement around corners. Available on 9 to 16 step models.

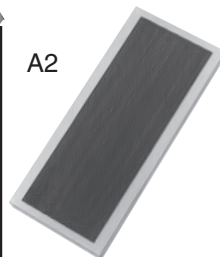
OPTIONS TO MODIFY AND INCREASE YOUR VERSATILITY



GRIP STRUT
Heavy duty, most rugged self-cleaning step available.



PERFORMA PERFORATED
Outperforms in terms of slip resistance all other designs presently on the market. Available on ladders 18" and 26" wide.



RUBBER TREAD
Solid metal step with non-slip ribbed rubber tread. Designed for use in offices.



DEEP TOP STEP
20" deep, order option E2
30" deep, order option E3.