

# Myers™ Hubs

## Applications:

- Myers™ Hubs are used in the termination of electrical circuits through wall of the enclosure
- Designed for use indoors or outdoors with rigid conduit and IMC
- Ideal for pharmaceutical, chemical and food processing, pulp/paper, nuclear, solar, and commercial construction applications
- Resistant to a variety of chemicals, including acetic, citric, and salt water
- The o-ring is a special "Viton (75)" and has excellent chemical resistance
- Hub is provided with a stainless steel ground nut

## Features:

- Wide range of styles, trade sizes, and materials to meet customer requirements and preferences
- Multiple certifications provide users peace of mind
- Easy installation and smooth pulling service for labor savings
- Tapered female threads for rigid/IMC conduit, NPSM male threads

## Certifications and Compliances:

- NEC/CEC:
  - Class I, Division 2
  - Class II, Divisions 1 & 2
  - Class III, Divisions 1 & 2
  - Class I, Zone 1, AEx e II
  - Class I, Zone 1, Ex e II
- UL Listed – UL Standard 514B
- CSA Certified – Certified by UL to CSA Standard C22.2 No. 18
- NEMA Type 2, 3, 3R, 4, 4X, 12 (std hub & ground hub)
- IEC:
  - ATEX Certified to EN60079-0:2009, EN60079-7:2007, and EN60079-14 Standards
  - ATEX Certified ITS12ATEX47591X II 2G Ex e IIC Gb Ta (-15°C to 120°C)
  - IECEX Certified IECEX ETL 12.0009X to IEC 60079-0:2007-10, Edition 5 and IEC 60079-7:2006-07, Edition 4
  - IECEX-Ex e II Gb Ta (-15°C to 120°C)
  - IP66

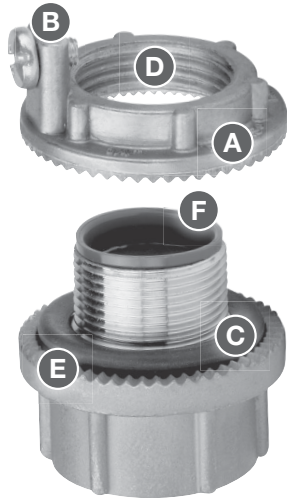


## Standard Materials:

- Nut: Zinc (Zamek-2, Zamek-3), Aluminum (Al 360), Stainless (316)
- Body: Zinc (Zamek-2, Zamek-3), Aluminum (Al 360), Stainless (316)
- Insuliner: Lexan
- O-ring: Gasket Viton
- Ground Screw: Steel/Stainless Steel

## Standard Finishes:

- Aluminum: Natural
- Zinc: Natural
- Stainless: Natural



## Design Features

- A Vibration-proof** - Strong, oversize nut with radial serrations assures flush installation and positive grounding.
- B Grounding Screw** for added safety.
- C Captive O-Ring Gasket** - Impervious to corrosive moisture and petroleum products. Gasket assures positive water and dust-tight installations.
- D Precision Machine Cut Threads** - Positive fit and simple installation.
- E No Welding** - Unique serrations on both nut and hub bite into metal assuring a positive electrical ground. (UL approved for use with service entrance conduit).
- F Posi-Lok Insulated Throat** - Cannot come out. Standard in sizes from 1/2" through 4".

### Hub Basic Scru-Tite®

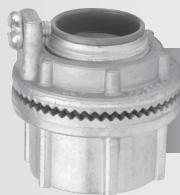
Hubs are ideal for general use with rigid conduit. Provides positive seal and electrical ground.



Available in trade sizes 3/8" through 6"

### Ground Hub

Combines all of the features of the Hub Basic Scru-Tite® plus the additional feature of the grounding screw on the locknut.



Available in trade sizes 1/2" through 6"

### ATEX Rated Hub

Hub is listed for use in hazardous (classified) locations to IECEx-ATEX certifications. Ideal for global requirements and OEM's shipping material worldwide.



Available in trade sizes 1/2" through 4"

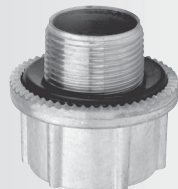
### Through-Bulkhead Fitting

Hubs are the perfect method for installing hubs on cast boxes or through thicker walls.



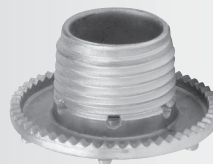
### Metric to NPT Adapter

Used to convert a threaded metric entry to a NPT entry.



### Drain Plugs

Designed to install in the bottom of an enclosure to drain any accumulated condensation. Available in aluminum or stainless steel construction.



### Cap-Off

Designed to install in enclosure to provide environmental cap for unused entries or knockouts.



# Myers™ Hubs

## Hub Basic Scru-Tite® – NEMA 2, 3, 3R, 4, 4X, and 12 Zinc

UL File No. E-27258



Cat. #	Size	Unit Qty.	Wt. Lbs. Per 100
ST 03†	3/8"	25	11
ST 1†	1/2"	25	19
ST 2†	3/4"	25	27
ST 3†	1"	25	40
ST 4†	1 1/4"	10	51
ST 5†	1 1/2"	10	68
ST 6†	2"	10	92
ST 7†	2 1/2"	5	210
ST 8†	3"	2	245
ST 9†	3 1/2"	2	278
ST 10†	4"	2	318
ST 11*	5"	1	478
ST 12*	6"	1	685

†Optional nickel-chrome plate finish. Add suffix -CP.  
\*Not supplied with insulator.

## Hub Basic Scru-Tite® – NEMA 2, 3, 3R, 4, 4X, and 12 Aluminum

UL File No. E-27258



Cat. #	Size	Unit Qty.	Wt. Lbs. Per 100
STA 1	1/2"	25	8
STA 2	3/4"	25	11
STA 3	1"	25	17
STA 4	1 1/4"	10	30
STA 5	1 1/2"	10	30
STA 6	2"	10	38
STA 7	2 1/2"	5	80
STA 8	3"	2	100
STA 9	3 1/2"	2	138
STA 10	4"	2	150
STA 11*	5"	1	300
STA 12*	6"	1	300

\*Not supplied with insulator.

## Ground Hub – Stainless Steel Type 316 NEMA 2, 3, 3R, 4, 4X and 12

UL File No. E-59509



Cat. #	Size	Unit Qty.	Wt. Lbs. Per 100
SSTG 1	1/2"	10	29
SSTG 2	3/4"	10	41
SSTG 3	1"	10	57
SSTG 4	1 1/4"	5	73
SSTG 5	1 1/2"	5	99
SSTG 6	2"	5	134
SSTG 7	2 1/2"	2	183
SSTG 8	3"	2	278
SSTG 9	3 1/2"	2	328
SSTG 10	4"	2	395

## Crouse-Hinds

by E.T.O.N

## Ground Hub – Zinc NEMA 2, 3, 3R, 4, 4X and 12

UL File No. E-59509



Cat. #	Size	Unit Qty.	Wt. Lbs. Per 100	CSA‡	UL‡	Max. Copper Grd. Wire Size
STG 1	1/2"	25	20	#8	#8	
STG 2	3/4"	25	28	#8	#8	
STG 3	1"	25	42	#8	#8	
STG 4	1 1/4"	10	55	#8	#8	
STG 5	1 1/2"	10	70	#6	#8	
STG 6	2"	10	95	#4	#8	
STG 7	2 1/2"	5	190	#2	#6	
STG 8	3"	2	243	1 / 0	#6	
STG 9	3 1/2"	2	300	2 / 0	#6	
STG 10	4"	2	323	2 / 0	#4	
STG 11*	5"	1	625	2 / 0	#2	
STG 12*	6"	1	750	3 / 0	#1	

\*Not supplied with insulator.

‡Use of wire terminal is required by CSA and recommended by UL for wire gauges over 10 AWG.

## Ground Hub – Aluminum NEMA 2, 3, 3R, 4, 4X and 12

UL File No. E-59509



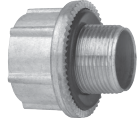
Cat. #	Size	Unit Qty.	Wt. Lbs. Per 100	CSA‡	UL‡	Max. Copper Grd. Wire Size
STAG 1	1/2"	25	13	#8	#8	
STAG 2	3/4"	25	14	#8	#8	
STAG 3	1"	25	18	#8	#8	
STAG 4	1 1/4"	10	25	#8	#8	
STAG 5	1 1/2"	10	33	#6	#8	
STAG 6	2"	10	41	#4	#8	
STAG 7	2 1/2"	5	90	#2	#6	
STAG 8	3"	2	103	1 / 0	#6	
STAG 9	3 1/2"	2	138	2 / 0	#6	
STAG 10	4"	2	140	2 / 0	#4	
STAG 11*	5"	1	325	3 / 0	#2	
STAG 12*	6"	1	350	3 / 0	#1	

\*Not supplied with insulator.

‡Use of wire terminal is required by CSA and recommended by UL for wire gauges over 10 AWG.

CP

## Metric to NPT Adapter – Zinc



Cat. #	Size	Unit Qty.	Wt. Lbs. Per 100
STM 1	M20 to 1/2"	25	13
STM 2	M25 to 3/4"	25	19
STM 3	M32 to 1"	25	32
STM 4	M40 to 1 1/4"	10	40
STM 5	M50 to 1 1/2"	10	57
STM 6	M63 to 2"	10	70

**Note:** The Myers metric to NPT hub adapter is used to convert a threaded metric entry to a NPT entry. The female thread is NPT and the male thread is metric.

## Metric to NPT Adapter – Stainless Steel

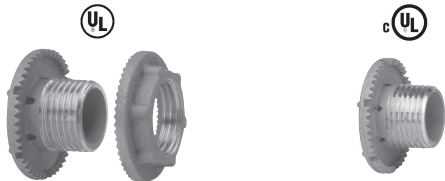


Cat. #	Size	Unit Qty.	Wt. Lbs. Per 100
SSTM 1	M20 to 1/2"	10	12
SSTM 2	M25 to 3/4"	10	27
SSTM 3	M32 to 1"	10	32
SSTM 4	M40 to 1 1/4"	5	46
SSTM 5	M50 to 1 1/2"	5	50
SSTM 6	M63 to 2"	5	99

**Note:** The Myers metric to NPT hub adapter is used to convert a threaded metric entry to NPT entry. The female thread is NPT and the male thread is metric.

## Non-Hazardous Drain Plug – Stainless Steel

UL File No. E-27258



Cat. #	Size	Unit Qty.	Wt. Lbs. Per 100
SSTC 1	1/2"	25	17
SSTC 1CD	1/2"	10	12

## Non-Hazardous Drain Plug – Aluminum

UL File No. E-27258



Cat. #	Size	Unit Qty.	Wt. Lbs. Per 100
STAC 1ST	1/2"	25	6
STAC 1CD	1/2"	25	2

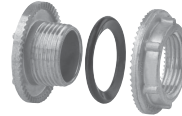
**Note:** SSTC1 and STAC 1ST are for knockouts and are supplied with a locknut and straight threads.  
SSTC 1CD and STAC 1CD are for threaded openings and are supplied without locknut and NPT threads. Not gasketed to allow for water drainage.

## Crouse-Hinds

by E.T.N

## Cap-Off – Zinc

UL File No. E-27258



Cat. #	Size	Unit Qty.	Wt. Lbs. Per 100
STC 1†	1/2"	25	13
STC 2†	3/4"	25	19
STC 3†	1"	25	28
STC 4†	1 1/4"	10	40
STC 5†	1 1/2"	10	50
STC 6†	2"	10	67

†Optional nickel-chrome plate finish. Add suffix -CP.

## Cap-Off – Aluminum

UL File No. E-27258



Cat. #	Size	Unit Qty.	Wt. Lbs. Per 100
STAC 1	1/2"	25	5
STAC 2	3/4"	25	8
STAC 3	1"	25	12

## Ground Nut – Zinc

UL File No. E-59509



Cat. #	Size	Unit Qty.	Wt. Lbs. Per 100	Max. Copper Grd. Wire Size	CSA‡	UL‡
STGN 1	1/2"	25	6	#8	#8	#8
STGN 2	3/4"	25	10	#8	#8	#8
STGN 3	1"	25	13	#8	#8	#8
STGN 4	1 1/4"	10	15	#8	#8	#8
STGN 5	1 1/2"	10	23	#6	#6	#8
STGN 6	2"	10	28	#4	#4	#8

‡Use of wire terminal is required by CSA and recommended by UL for wire gauges over 10 AWG.

## Ground Nut – Aluminum

UL File No. E-59509



Cat. #	Size	Unit Qty.	Wt. Lbs. Per 100	Max. Copper Grd. Wire Size	CSA‡	UL‡
STAGN 1	1/2"	25	3	#8	#8	#8
STAGN 2	3/4"	25	4	#8	#8	#8
STAGN 3	1"	25	6	#8	#8	#8
STAGN 4	1 1/4"	10	8	#8	#8	#8
STAGN 5	1 1/2"	10	11	#6	#6	#8
STAGN 6	2"	10	14	#4	#4	#8

‡Use of wire terminal is required by CSA and recommended by UL for wire gauges over 10 AWG.

CP