

# Covers for Cast Iron or Aluminum Device Boxes

## WLRS and WLG Wet Location Covers

For NEMA Configuration Receptacle Interiors and GFCI Receptacles

### Applications:

WLRS, WLRD and WLG series wiring device covers are designed to meet the total NEC Code requirements for wet locations. WLRS, WLRD and WLG series covers are suitable for use in wet and damp locations:

- Wherever portable equipment is required
- As general purpose utility receptacle covers
- For industrial, commercial or residential use
- In areas where electrical requirements do not exceed medium duty ratings
- To mount FS and FD single-gang or multi-gang boxes having individual cover openings (see Sect. 2F for listings)
- To mount on most flush device boxes (see Accessories)

### Features:

#### WLRS, WLRD and WLG covers:

- Self-closing spring door assures protection of wiring device at all times, in wet and damp locations
- One piece EPDM gasket provides environmental protection of wiring device at all times
- EPDM gasketing material offers excellent resistance to ozone, weather and temperature extremes of -50°F to 260°F
- Die cast, copper-free aluminum construction with aluminum lacquer finish provides maximum corrosion resistance
- Positive ground path ensured for all exposed metal parts

#### NEMA configuration receptacle interiors:

- Comply with NEMA Standards WD-1 and WD-5
- Grounded through an extra contact in all types except 3-phase applications; self grounded in duplex variety
- Back and side wired
- Offered in single and duplex configurations for use with standard plugs
- Specification grade

### Certifications and Compliances:

- ANSI/UL Standard 514A
- NEC Code 410-57
- OSHA Standards, Subpart "S"
- NEMA Standards WD-1, 1974 (Straight Blade) and WD-5, 1972 (Locking Type)

### Standard Materials:

- WLRS, WLRD and WLG face plate and cover – die cast copper-free aluminum
- Cover hinge spring – stainless steel
- Cover screws – corrosion resistant metal
- Gasket – ethylene propylene rubber (EPDM)

### Standard Finishes:

- Copper-free aluminum – aluminum lacquer

### Electrical Rating Ranges:

- 15 amperes; 125, 250, or 277 volts
- 20 and 30 amperes; 125, 250, 277, 480, 600, 125 / 250, 208 / 120, 480 / 277 or 600 / 347 volts

### Accessories:

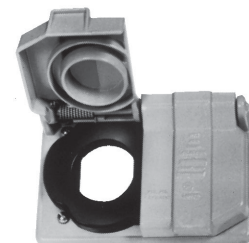
- Flush mounting adapter – WLRA-1 required for mounting on device boxes. (Order separately)



Typical installation

### Spring Door Covers – with Gasket\*

For NEMA Configuration Round Receptacles



Single cover Cat. #	Diameter	Duplex cover Cat. #	Diameter
WLRS1	1 <sup>3</sup> / <sub>8</sub> "	WLRD1	1 <sup>3</sup> / <sub>8</sub> "
WLRS2	1 <sup>1</sup> / <sub>2</sub> "		

\*Patent Number 4,058,358  
†Horizontal mount only.

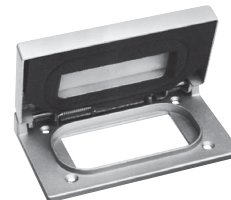
### Spring Door Covers – with Gasket\*

For GFCI Receptacles in Wet Locations



Horizontal Mount  
for flush  
device boxes  
Cat. #

WLG F



Horizontal Mount  
for FS and FD  
device boxes  
Cat. #

WLG F S



Vertical Mount  
for FS and FD  
device boxes  
Cat. #

WLG F S V

# Covers for Cast Iron or Aluminum Device Boxes WLRS and WLG Wet Location Covers

For NEMA Configuration Receptacle Interiors and GFCI Receptacles

2F

## Ordering Information - Covers with and without NEMA Configuration Receptacles For Non-Locking Blade Plugs

Type	Volts	NEMA Configuration	Complete Cover with Receptacle Assy. Cat. #	Spring Door Cover & Gasket Only Cat. #*
<b>Single Device</b>				
2-Pole 3-Wire Grounding 15 Amp	125V	5-15R	WLRS 5 15	WLRS1
2-Pole 3-Wire Grounding 20 Amp	250V	6-15R	WLRS 6 15	WLRS1
2-Pole 3-Wire Grounding 15 Amp	125V	5-20R	WLRS 5 20	WLRS1
2-Pole 3-Wire Grounding 20 Amp	250V	6-20R	WLRS 6 20	WLRS1

Type	Volts	NEMA Configuration	Complete Cover with Receptacle Assy. Cat. #	Spring Door Cover & Gasket Only Cat. #*
<b>Duplex Device</b>				
2-Pole 3-Wire Grounding 15 Amp	125V	5-15R	WLRD 5 15	WLRD1
2-Pole 3-Wire Grounding 20 Amp	250V	6-15R	WLRD 6 15	WLRD1
2-Pole 3-Wire Grounding 15 Amp	125V	5-20R	WLRD 5 20	WLRD1
2-Pole 3-Wire Grounding 20 Amp	250V	6-20R	WLRD 6 20	WLRD1

## Ordering Information - Covers with and without NEMA Configuration Receptacles For Locking Blade Plugs

Type	Volts	NEMA Configuration	Complete Cover with Receptacle Assy. Cat. #	Spring Door Cover & Gasket Only Cat. #*
<b>Single Device</b>				
2-Pole 3-Wire Grounding 15 Amp	125V	L5-15R	WLRS L5 15	WLRS1
2-Pole 3-Wire Grounding 20 Amp	250V	L6-15R	WLRS L6 15	WLRS1
2-Pole 3-Wire Grounding 15 Amp	125V	L5-20R	WLRS L5 20	WLRS2
2-Pole 3-Wire Grounding 20 Amp	250V	L6-20R	WLRS L6 20	WLRS2

Type	Volts	NEMA Configuration	Complete Cover with Receptacle Assy. Cat. #	Spring Door Cover & Gasket Only Cat. #*
<b>Duplex Device</b>				
2-Pole 3-Wire Grounding 15 Amp	125V	L5-15R	WLRD L5 15	WLRD1

\*Must be used with a wet locations rated wiring device.

## Dimensions In Inches:

