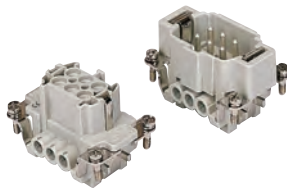


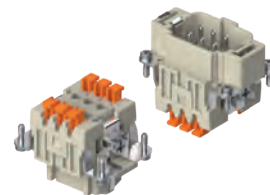
CNE CSH-SQUICH® 6 poles + ⊕ 16A - 500V

| | |
|---------------------------------------|---------------------------|
| enclosures: size "44.27" | page: |
| C-TYPE IP65/IP66 | 387 - 392 |
| C7 IP67, single lever | 436 - 437 |
| V-TYPE IP65/IP66, single lever | 444 - 447 |
| BIG hoods | 466 - 467 |
| T-TYPE IP65 insulating | 480 - 481 |
| T-TYPE / W IP66/IP69 insulating | 489 |
| HYGIENIC T-TYPE / H IP66/IP69 | 501 |
| HYGIENIC T-TYPE / C IP66/IP69, -50 °C | 506 |
| W-TYPE for aggressive environments | 521 |
| E-Xtreme® corrosion proof | 530 - 531, 542, 550 - 551 |
| EMC | 578 |
| Central lever | 603 - 605 |
| LS-TYPE | 618 - 619 |
| IP68 | 632 - 635 |
| panel supports: COB | page: 652 - 653 |

inserts, screw terminal connections

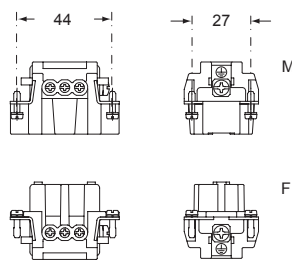


inserts, spring terminal connections without tools

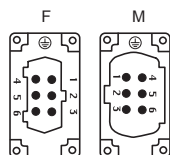


| description | part No. | part No. |
|---|--|----------------------------------|
| indirect, with plate ¹⁾ female inserts with female contacts male inserts with male contacts | CNEF 06 T CNEM 06 T | |
| direct, without plate ²⁾ female inserts with female contacts male inserts with male contacts | CNEF 06 TX CNEM 06 TX | |
| spring terminals with actuator button female inserts with female contacts male inserts with male contacts | | CSHF 06 CSHM 06 |

- characteristics according to EN 61984:
16A 500V 6kV 3
16A 400/690V 6kV 2
- (UL for USA and Canada), certified
- rated voltage according to UL/CSA: 600V
- insulation resistance: ≥ 10 GΩ
- ambient temperature limit: -40 °C ... +125 °C
- made of self-extinguishing thermoplastic resin UL 94V-0
- mechanical life: ≥ 500 cycles
- contact resistance: ≤ 1 mΩ (CNE) - ≤ 3 mΩ (CSH)
- for max. current load see the connector inserts derating diagrams below; for more information see page 28



contacts side (front view)

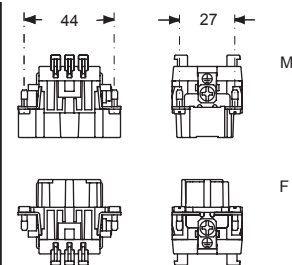


- inserts with plate for section conductors:
0,5 - 4 mm² - AWG 20 - 12
- inserts without plate for section conductors:
0,25 - 2,5 mm² - AWG 24 - 14
- conductors stripping length: 7 mm
- terminal screw torque: 0,5 Nm (4,4 lb.in), for more information see page 20 and 21

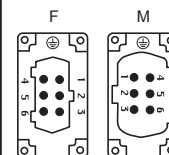
¹⁾ for unprepared conductors



²⁾ for conductors with end sleeve ferrule

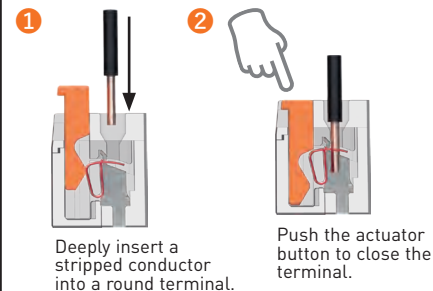


contacts side (front view)

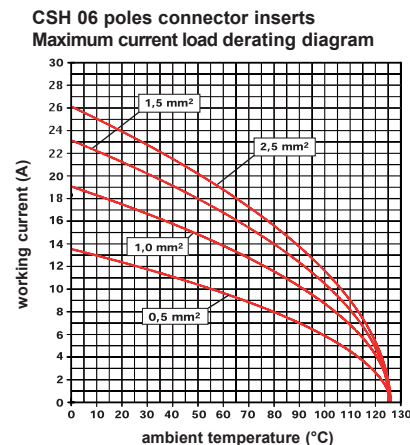
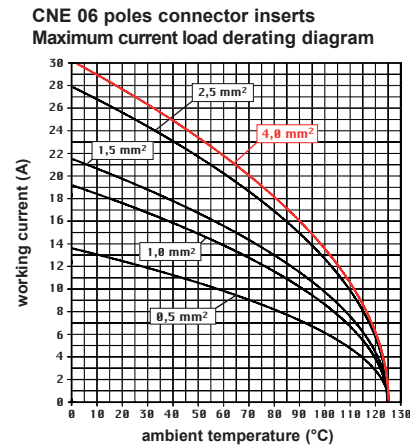
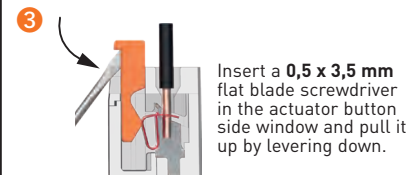


- inserts for connectors with the following sections:
0,14 - 2,5 mm² - AWG 26 - 14
- conductors stripping length: 9...11 mm

SQUICH®-spring connection technology WIRING



RE-OPENING



CNE CSH-SQUICH®