

FEATURES & SPECIFICATIONS

INTENDED USE — The CLX is a linear lighting solution that is available in multiple lengths, lumen packages and distributions. Designed for versatility, the CLX can address virtually any indoor lighting need. The CLX is also offered in standard and high efficacy configurations and capable of being continuous row mounted or installed as a stand-alone fixture. Ideal for uplight and downlight in commercial, retail, manufacturing, warehouse, and display applications. **Certain airborne contaminants can diminish the integrity of acrylic and/or polycarbonate.** [Click here for Acrylic-Polycarbonate Compatibility table for suitable uses.](#)

CONSTRUCTION — Channel and cover are formed from code-gauge cold-rolled steel. Housing and lens endcaps are injection molded plastic to provide a more architectural look and feel. The endcaps come standard with a 7/8" knock out for continuous mounting but can be ordered without.

Finish: Paint options include high-gloss, baked white polyester (WH), galvanized (GALV), matte black (MB) and smoke gray (SKGY). Five-stage iron phosphate pre-treatment ensures superior paint adhesion and rust resistance.

OPTICS — Offered with acrylic lens and less lens configurations. Provides a choice of optical distributions including, wide, narrow, and aisle.

ELECTRICAL — Utilizes high-output LEDs integrated on a two-layer circuit board, ensuring cool-running operation. Optional internal pluggable wiring harness for reduced labor cost in row mounting applications. (See PLR_ordering information on page 15.) Electronic LED driver is multi-volt input and 0-10V dimming standard (see Operational Data on page 12 for actual wattage consumption). This fixture is designed to withstand a maximum line surge of 2.5kV at 0.75kA combination wave for indoor locations, for applications requiring higher level of protection additional surge protection must be provided.

L70>100,000 hours at 25°C.

LEDs provide nominal 80 CRI or 90CRI at 3000 K, 3500 K, 4000 K, or 5000 K.

Lumen output up to 2,500 lumens per foot.

INSTALLATION — Fixture may be ceiling or wall mounted (with or without THCLX hanger or angle mounted with CLXANGBRT), pendant or stem mounted with appropriate mounting options.

WARNING — Removing the lens and opening the fixture during installation exposes the LEDs, putting them at risk for damage.

If you plan to surface mount the fixture, we recommend using the THCLX. This eliminates the need to open the fixture.

If you plan to continuous row mount, we recommend using the PLR wiring harness option. This eliminates the need to open the fixture.

Damage to the LEDs caused during installation will not be covered under the warranty.

LISTINGS — CSA certified to US and Canadian safety standards. For use in damp locations between -4°F (-20°C) and 104°F (40°C). Optional High Ambient (HA) ranging to 122°F (50°C) available on certain lumen packages (See ambient temperature chart for additional information).

DesignLights Consortium® (DLC) Premium qualified product and DLC qualified product. Not all versions of this product may be DLC Premium qualified or DLC qualified. Please check the DLC Qualified Products List at www.designlights.org/QPL to confirm which versions are qualified.

WARRANTY — 5-year limited warranty. Complete warranty terms located at:

www.acuitybrands.com/CustomerResources/Terms_and_conditions.aspx

Note: Actual performance may differ as a result of end-user environment and application.

All values are design or typical values, measured under laboratory conditions at 25°C.

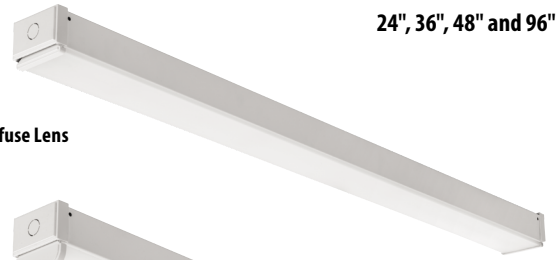
Specifications subject to change without notice.

| |
|----------------|
| Catalog Number |
| Notes |
| Type |

LED Linear

CLX

24", 36", 48" and 96" Lengths



Flat Diffuse Lens



Round Diffuse Lens



Wide Diffuse Lens



Stock configurations are offered for shorter lead times:

| Stock Part Number | UPC | DLC QPL Product ID | DLC Premium |
|---|----------------|--------------------|-------------|
| CLX L48 3000LM SEF FDL MVOLT GZ10 40K 80CRI WH | 00191723525816 | PJANKZR4 | Yes |
| CLX L48 3000LM SEF FDL MVOLT GZ10 50K 80CRI WH | 00191723525885 | PKW32VKL | Yes |
| CLX L48 5000LM SEF FDL MVOLT GZ10 40K 80CRI WH | 00191723525939 | P77I8Z20 | Yes |
| CLX L48 5000LM SEF FDL MVOLT GZ10 50K 80CRI WH | 00191723525908 | P8A42C1H | Yes |
| CLX L96 6000LM SEF FDL MVOLT GZ10 40K 80CRI WH | 00191723525861 | PPFTGRBV | Yes |
| CLX L96 6000LM SEF FDL MVOLT GZ10 50K 80CRI WH | 00191723525915 | PW6250TE | Yes |
| CLX L96 10000LM SEF FDL MVOLT GZ10 40K 80CRI WH | 00191723525922 | PYKOC7EW | Yes |
| CLX L96 10000LM SEF FDL MVOLT GZ10 50K 80CRI WH | 00191723525830 | PKYPL35K | Yes |
| CLX L48 3000LM SEF RDL MVOLT GZ10 40K 80CRI WH | 00191723525960 | PJANKZR4 | Yes |
| CLX L48 3000LM SEF RDL MVOLT GZ10 50K 80CRI WH | 00191723525892 | PKW32VKL | Yes |
| CLX L48 5000LM SEF RDL MVOLT GZ10 40K 80CRI WH | 00191723525854 | P77I8Z20 | Yes |
| CLX L48 5000LM SEF RDL MVOLT GZ10 50K 80CRI WH | 00191723525946 | P8A42C1H | Yes |
| CLX L96 6000LM SEF RDL MVOLT GZ10 40K 80CRI WH | 00191723525878 | PPFTGRBV | Yes |
| CLX L96 6000LM SEF RDL MVOLT GZ10 50K 80CRI WH | 00191723525823 | PD0SJIAD | Yes |
| CLX L96 10000LM SEF RDL MVOLT GZ10 40K 80CRI WH | 00191723525953 | PYKOC7EW | Yes |
| CLX L96 10000LM SEF RDL MVOLT GZ10 50K 80CRI WH | 00191723525847 | PKYPL35K | Yes |

A+ Capable Luminaire

This item is an A+ capable luminaire, which has been designed and tested to provide consistent color appearance and out-of-the-box control compatibility with simple commissioning.

- All configurations of this luminaire meet the Acuity Brands' specification for chromatic consistency
- This luminaire is part of an A+ Certified solution for nLight® or XPoint™ Wireless control networks marked by a shaded background*

To learn more about A+, visit www.acuitybrands.com/aplus.

*See ordering tree for details

CLX LED Linear

ORDERING INFORMATION

Lead times will vary depending on options selected. Consult with your sales representative.

Example: CLX L48 5000LM SEF WDL MVOLT GZ10 40K 80CRI WH

| Series | Length | Nominal lumens | Performance package | Louver | Lens |
|--------------------------------------|------------------------|--------------------------------------|--------------------------------------|--|----------------------------------|
| CLX LED linear | L24 24" ^{1,2} | 1500LM 1,500 lumens | SEF Standard efficiency ⁵ | (Blank) Less louver | L/Lens Less lens |
| | | 2000LM 2,000 lumens | HEF Premium efficiency | SBLW Straight blade louver, white ⁶ | FDL Flat diffuse ^{7,8} |
| | | 2500LM 2,500 lumens | | SBLMB Straight blade louver, matte black ⁶ | RDL Round diffuse ^{7,8} |
| | | 3500LM 3,500 lumens | | SBLGV Straight blade louver, galvanized ⁶ | WDL Wide diffuse ^{7,8} |
| | | 4500LM 4,500 lumens | | SBLSKGY Straight blade louver, smoke gray ⁶ | |
| | L36 36" ² | 2250LM 2,250 lumens | | | |
| | | 3000LM 3,000 lumens | | | |
| | | 3750LM 3,750 lumens | | | |
| | | 5250LM 5,250 lumens | | | |
| | | 6750LM 6,750 lumens | | | |
| | L48 48" | 7500LM 7,500 lumens ^{3,4} | | | |
| | | 3000LM 3,000 lumens | | | |
| | | 4000LM 4,000 lumens | | | |
| | | 5000LM 5,000 lumens | | | |
| | | 7000LM 7,000 lumens ² | | | |
| | L96 96" | 9000LM 9,000 lumens ² | | | |
| 10000LM 10,000 lumens ^{2,4} | | | | | |
| 6000LM 6,000 lumens | | | | | |
| 8000LM 8,000 lumens | | | | | |
| 10000LM 10,000 lumens | | | | | |
| | | 14000LM 14,000 lumens ^{2,4} | | | |
| | | 18000LM 18,000 lumens ^{2,4} | | | |
| | | 20000LM 20,000 lumens ^{2,4} | | | |

| Distribution | Voltage | Driver ¹⁴ | Color temperature | Coloring rendering index |
|--|------------------------------|---------------------------|-------------------|--------------------------|
| (Blank) General | MVOLT 120-277V ¹⁰ | 277 277V | 30K 3000 K | 80CRI 80 CRI |
| ND Narrow ^{8,9} | 120 120V | 347 347V ^{11,12} | 35K 3500 K | 90CRI 90 CRI |
| WD Wide ^{8,9} | 208 208V | 480 480V ^{11,12} | 40K 4000 K | |
| AD2 Aisle, 24° off center ^{8,9} | 240 240V | | 50K 5000 K | |

| Options | Finish |
|--|---|
| PS1050 Emergency battery pack, 10W, non-CEC compliant ^{2,12,15,16,17} | WH White |
| E10WLCP Emergency battery pack, 10W Linear Constant Power, CA Title 20 compliant ^{2,12,15,16,17} | GALVW Galvanized with white lens end caps |
| BGTD Generator transfer device, not available with PS1050 ^{12,15,18} | GALVB Galvanized with black lens end caps |
| OCS 5', 18/3 Reloc selectable One Pass cable ¹⁵ | MB Matte black |
| HA High ambient, for use in ambient temperatures up to 50°C | SKGYW Smoke gray with white lens end caps |
| EPNKO Decorative endplate, no knock out ¹⁹ | SKGYB Smoke gray with black lens end caps |
| OUTCTR Wiring leads pulled through back center of fixture ²² | |
| OUTEND Wiring leads pulled through end of fixture ²⁰ | |
| CS1W Straight blade plug, 120V ^{10,15} | |
| CS3W NEMA twist-lock plug, 120V ^{10,15} | |
| CS7W Straight blade plug, 277V ^{10,15} | |
| CS11W NEMA twist-lock plug, 277V ^{10,15} | |
| CS25W NEMA twist-lock plug, 347V ^{10,15} | |
| CS97W NEMA twist-lock plug, 480V ^{10,15} | |
| CS93W 600V SEOWW white cord, no plug (no voltage required) | |
| CS6616STOWD5D 6' white cord, 16/5, no plug, includes low voltage dimming wires (no voltage required) ¹⁴ | |
| PLR___ Plug-in wiring, see page 16 for ordering information | |
| PLR1LVG Plug-in wiring, low voltage dimming ²¹ | |
| RRL___ RELOC [®] -ready luminaire. See page 15 for ordering information | |
| SPD Surge protection device, provides up to 6kV protection ^{15,22} | |
| USPOM Assembled in the United States | |
| Individual controls: ²³ | |
| MSD7 PIR integral occupancy sensor | |
| MSDPDT7 PDT 7 dual technology integral occupancy control | |
| MSD7ADC PIR integral occupancy sensor with automatic dimming control photocell | |
| MSDPDT7ADC PDT integral occupancy sensor with automatic dimming control photocell | |
| Xpoint™ Wireless: ²³ | |
| XAD XPoint™ Wireless 0-10V relay, internal, lower max ambient ²⁴ | |
| XAD924 XPoint™ Wireless 0-10V relay, internal, lower max ambient with emergency relay (UL924 compliant) | |
| nLight® Wired: ²³ | |
| N100 nLight® without lumen management | |
| NES7 nLight® nES 7 PIR integral occupancy sensor ²⁵ | |
| NESPDT7 nLight® nES PDT 7 dual technology integral occupancy control ²⁵ | |
| NES7ADCX nLight® nES 7 ADCX PIR integral occupancy sensor with automatic dimming photocell ²⁵ | |
| NESPDT7ADCX nLight® nES PDT 7 dual technology integral occupancy sensor with automatic dimming photocell ²⁵ | |
| nLight® Wireless: ²⁶ | |
| NLTAIR2 RES7 nLight® Generation 2 enabled PIR integral occupancy sensor with automatic dimming photocell ²⁶ | |
| NLTAIR2 RES7PDT nLight AIR Generation 2 enabled dual technology integral occupancy sensor with automatic dimming photocell ²⁶ | |
| NLTAIR2 RIO No sensor control ²⁶ | |

See Accessories and footnotes on next page



CLX LED Linear

| Accessories: Order as separate catalog number. | | | |
|--|--|---------------|---|
| ZACVH | Aircraft cable 120" (one pair) | THCLX ___ | Tong hanger (Must specify color) (one pair) ²⁷ |
| ZAC120 | One adjustable aircraft cable with canopy 120" | CLXANGBKT ___ | Angle bracket, (Must specify color) (one pair) ²⁷ |
| ZACFP120 | One adjustable aircraft cable with feed (3 conductor) and canopy, 120" | HC36 | Hanger chain, 36" (one pair) |
| ZACFPD120 | One adjustable aircraft cable with feed (5 conductor) and canopy 120" | LSXR | Sensor Switch ® LSXR occupancy sensor |
| ZAC240 | One adjustable aircraft cable with canopy 240" | NPP16D | nLight® switching/dimming module |
| ZACFP240 | One adjustable aircraft cable with feed (3 conductor) and canopy, 240" | NPP16DER | nLight® switching/dimming module with emergency relay |
| ZACFPD240 | One adjustable aircraft cable with feed (5 conductor) and canopy 240" | rPP20D | nLight® air dimming/switching module |
| SQ_ | Stem kit, 2" increments up to 48" | XPA CMRBO | XPoint™ Wireless 0-10V relay, external, 55°C max ambient |
| | | CLXRW24 ___ | Wide decorative 24" reflector, (Must specify color) ²⁸ |
| | | CLXRW36 ___ | Wide decorative 36" reflector, (Must specify color) ²⁸ |
| | | CLXRW48 ___ | Wide decorative 48" reflector, (Must specify color) ²⁸ |
| | | CLXRW96 ___ | Two wide decorative 48" reflectors, (Must specify color) ²⁷ |
| | | CLXRWU24 ___ | Wide decorative 24" reflector with uplight, (Must specify color) ²⁸ |
| | | CLXRWU36 ___ | Wide decorative 36" reflector with uplight, (Must specify color) ²⁸ |
| | | CLXRWU48 ___ | Wide decorative 48" reflector with uplight, (Must specify color) ²⁸ |
| | | CLXRWU96 ___ | Two wide decorative 48" reflectors with uplight, (Must specify color) ²⁸ |
| | | CLXRN24 | Narrow 24" reflector, (Must specify color) ²⁹ |
| | | CLXRN36 | Narrow 36" reflector, (Must specify color) ²⁹ |
| | | CLXRN48 | Narrow 48" reflector, (Must specify color) ²⁹ |
| | | CLXRN96 | Two narrow 48" reflectors, (Must specify color) ²⁹ |
| | | WGCLX24 ___ | 24" wireguard, (Must specify color) ³⁰ |
| | | WGCLX36 ___ | 36" wireguard, (Must specify color) ³⁰ |
| | | WGCLX48 ___ | 48" wireguard, XX, (Must specify color) 96" fixture requires two ³⁰ |

Notes

- Not available with OUTCTR option.
- Not available with HA option.
- Not available with SEF when ordered in combination with EZ1.
- Not available with NLTAIR2 RES7, NLTAIR2 RES7PDT, or NLTAIR2 RIO.
- Not available with EZ1 when ordered with L24 with 5000LM or L36 with 7500LM.
- When ordered with L24 only available with 1500LM or 2000LM in combination with GZ10 driver. Not for use with THCLX, CLXANGBKT, CLX reflectors or WGCLX accessories. Not available with RDL lens options.
- Only available with general distribution.
- Not available with CLXRN accessories.
- Available L/LENS only.
- Not available with PS1050, E10WLCP, or BGTD.
- Voltage selected utilizes a step-down transformer. Not available with L24 when ordered with N100. Not available with PS1050, E10WLCP or BGTD option.
- Requires SPD option.
- When continuous row mounting, fixtures must all have the same driver selection.
- Not available with Individual controls, nLight wired networking, nLight wireless networking, nLight wireless zone control options.
- Must specify voltage.
- Not available with L24 or L36. Not available with L48 in combination with N100.
- Not available with BGTD option.
- Available with L48 or L96 only. 20 Not available with PS1050 or E10WLCP options. Not available with 208 or 240V. Not available Individual controls, nLight Wired, or nLight Wireless options.
- Not available OUTEND.
- Not available with PLR options.
- Not available with XPoint, Individual controls, nLight Wired, or nLight Wireless options.
- Required with PS1050, E10WLCP, BGTD, XAD, or XAD924.
- Not available with any other control option. Requires EZ1.
- SPD Option required.
- Requires N100 option.
- Not available with L24 in combination with 5000LM, not available with L36 in combination with 7500LM, not available with L48 in combination with 10000LM, and not available with L96 in combination with 14000LM, 18000LM, or 20000LM. Not available with PLRs containing low voltage dimming wires.
- Not available with louver, wireguards, wide reflectors.
- L24 reflector is 22.65", L36 reflector is 34.01", L48 reflector is 46.80", L96 comes with two L48 reflectors.
- For use with L/LENS fixtures only. L24 reflector is 22.75", L36 reflector is 34.20", L48 reflector is 46.85", L96 comes with two L48 reflectors.
- Not for use with CLX wide reflector accessories.

POWER SENTRY EMERGENCY BATTERY PACKS

| | | |
|-----------|---|--------------------------------------|
| PS1050 | https://www.acuitybrands.com/products/detail/369448/Power-Sentry/PS1050/Reduced-Profile-LED-Emergency-Battery-Pack | Factory installable |
| E10WLCP | https://www.acuitybrands.com/products/detail/755258/Power-Sentry/PS1055LCP-Battery-Pack/Constant-Power-Field-Installable-LED-Emergency-Driver | Factory installable |
| PS1555LCP | https://www.acuitybrands.com/products/detail/755258/Power-Sentry/PS1055LCP-Battery-Pack/Constant-Power-Field-Installable-LED-Emergency-Driver | Field installable, remote mount only |

EMERGENCY LUMENS

| Efficiency Package | SEF | HEF |
|--------------------|------|------|
| PS1050 | 1400 | 1500 |
| PS1055LCP | 1400 | 1500 |
| PS1555LCP | 2000 | 2100 |

Note: For emergency lumen output of specific model, please consult factory. One board will be illuminated during emergency operation.

CLX OPERATIONAL DATA

| | Length | Nominal lumen package | Performance package | CRI | Delivered Lumens | | | | Wattage |
|--------|--------|-----------------------|---------------------|------|-------------------|-------|-------|-------|---------|
| | | | | | Color Temperature | | | | |
| | | | | | 3000K | 3500K | 4000K | 5000K | |
| L/Lens | L24 | 1500LM | SEF | 80 | 1497 | 1540 | 1582 | 1619 | 10.85 |
| | | | | 90 | 1305 | 1333 | 1371 | 1441 | 10.85 |
| | | | HEF | 80 | 1493 | 1514 | 1582 | 1586 | 10.39 |
| | | | | 90 | 1220 | 1237 | 1301 | 1301 | 10.39 |
| | | 2000LM | SEF | 80 | 2066 | 2125 | 2183 | 2235 | 14.48 |
| | | | | 90 | 1801 | 1840 | 1892 | 1989 | 14.48 |
| | | | | 80 | 2060 | 2089 | 2183 | 2189 | 13.46 |
| | | | HEF | 90 | 1684 | 1708 | 1796 | 1796 | 13.46 |
| | | | | 80 | 2616 | 2689 | 2763 | 2829 | 18.41 |
| | | | | 90 | 2279 | 2329 | 2394 | 2517 | 18.41 |
| | | 2500LM | SEF | 80 | 2607 | 2644 | 2763 | 2771 | 17.42 |
| | | | | 90 | 2132 | 2161 | 2273 | 2273 | 17.42 |
| | | | HEF | 80 | 3518 | 3617 | 3716 | 3804 | 25.83 |
| | | | | 90 | 3065 | 3132 | 3220 | 3385 | 25.83 |
| | | 3500LM | SEF | 80 | 3506 | 3556 | 3716 | 3726 | 25.04 |
| | | | | 90 | 2867 | 2907 | 3057 | 3057 | 25.04 |
| | | | | 80 | 5040 | 5182 | 5325 | 5451 | 38.7 |
| | | | HEF | 90 | 4392 | 4487 | 4614 | 4851 | 38.7 |
| | | | | 80 | 5024 | 5096 | 5325 | 5339 | 34.8 |
| | | | | 90 | 4108 | 4165 | 4380 | 4380 | 34.8 |
| | | 4500LM | SEF | 80 | 5355 | 5506 | 5657 | 5791 | 41.48 |
| | | | | 90 | 4667 | 4767 | 4902 | 5153 | 41.48 |
| | | | | 80 | 5338 | 5414 | 5657 | 5672 | 38.11 |
| | | | HEF | 90 | 4364 | 4425 | 4653 | 4653 | 38.11 |
| | 80 | | | 2411 | 2547 | 2101 | 2207 | 16.36 | |
| | 90 | | | 2479 | 2607 | 2146 | 2320 | 16.36 | |
| | L36 | 2250LM | SEF | 80 | 2437 | 2554 | 1965 | 2095 | 15.47 |
| | | | | 90 | 2547 | 2403 | 1992 | 2095 | 15.47 |
| | | | | 80 | 3221 | 3388 | 2730 | 2868 | 20.8 |
| | | | HEF | 90 | 3310 | 3133 | 2789 | 3015 | 20.8 |
| | | | | 80 | 3167 | 3319 | 2553 | 2722 | 19.98 |
| | | | | 90 | 3310 | 3123 | 2589 | 2722 | 19.98 |
| | | 3000LM | SEF | 80 | 4123 | 4337 | 3495 | 3671 | 26.47 |
| | | | | 90 | 4236 | 4010 | 3570 | 3859 | 26.47 |
| | | | | 80 | 4054 | 4248 | 3268 | 3485 | 25.09 |
| | | | HEF | 90 | 4236 | 3997 | 3314 | 3485 | 25.09 |
| | | | | 80 | 5545 | 5833 | 4700 | 4937 | 39.9 |
| | | | | 90 | 5698 | 5393 | 4801 | 5190 | 39.9 |
| | 3750LM | SEF | 80 | 5452 | 5713 | 4396 | 4687 | 34.3 | |
| | | | 90 | 5698 | 5376 | 4457 | 4687 | 34.3 | |
| | | | 80 | 7081 | 7448 | 6001 | 6303 | 54.85 | |
| | | HEF | 90 | 7275 | 6886 | 6131 | 6627 | 54.85 | |
| | | | 80 | 6962 | 7294 | 5613 | 5984 | 47.97 | |
| | | | 90 | 7275 | 6864 | 5691 | 5984 | 47.97 | |
| | 5250LM | SEF | 80 | 7756 | 8158 | 6574 | 6905 | 62.6 | |
| | | | 90 | 7969 | 7543 | 6716 | 7260 | 62.6 | |
| | | | 80 | 7626 | 7991 | 6148 | 6555 | 54.02 | |
| | | HEF | 90 | 7969 | 7519 | 6234 | 6555 | 54.02 | |

CLX OPERATIONAL DATA (continued)

| | Length | Nominal lumen package | Performance package | CRI | Delivered Lumens | | | | Wattage |
|--------|--------|-----------------------|---------------------|-----|-------------------|-------|-------|-------|---------|
| | | | | | Color Temperature | | | | |
| | | | | | 3000K | 3500K | 4000K | 5000K | |
| L/Lens | L48 | 3000LM | SEF | 80 | 3019 | 3104 | 3190 | 3265 | 20.32 |
| | | | | 90 | 2631 | 2688 | 2764. | 2906. | 20.32 |
| | | | HEF | 80 | 3010 | 3052 | 3190 | 3198 | 19.01 |
| | | | | 90 | 2461 | 2495 | 2624 | 2624 | 19.01 |
| | | 4000LM | SEF | 80 | 4034 | 4148 | 4262 | 4363 | 27.58 |
| | | | | 90 | 3515 | 3591 | 3693 | 3882 | 27.58 |
| | | | HEF | 80 | 4021 | 4078 | 4262 | 4273 | 24.75 |
| | | | | 90 | 3288 | 3334 | 3505 | 3505 | 24.75 |
| | | 5000LM | SEF | 80 | 5047 | 5189 | 5332 | 5458 | 34.8 |
| | | | | 90 | 4398 | 4493 | 4620 | 4857 | 34.8 |
| | | | HEF | 80 | 5031 | 5102 | 5332 | 5346 | 31.77 |
| | | | | 90 | 4113 | 4171 | 4386 | 4386 | 31.77 |
| | | 7000LM | SEF | 80 | 7311 | 7517 | 7724 | 7907 | 49.05 |
| | | | | 90 | 6371 | 6509 | 6692 | 7036 | 49.05 |
| | | | HEF | 80 | 7288 | 7391 | 7724 | 7744 | 44.67 |
| | | | | 90 | 5959 | 6042 | 6353 | 6353 | 44.67 |
| | | 9000LM | SEF | 80 | 9215 | 9475 | 9735 | 9967 | 63.99 |
| | | | | 90 | 8031 | 8204 | 8435 | 8869 | 63.99 |
| | | | HEF | 80 | 9186 | 9317 | 9735 | 9762 | 58.58 |
| | | | | 90 | 7511 | 7615 | 8008 | 8008 | 58.58 |
| | | 10000LM | SEF | 80 | 10299 | 10590 | 10880 | 11139 | 73.37 |
| | | | | 90 | 8975 | 9169 | 9427 | 9912 | 73.37 |
| | | | HEF | 80 | 10266 | 10412 | 10880 | 10910 | 66.27 |
| | | | | 90 | 8394 | 8511 | 8950 | 8950 | 66.27 |
| | L96 | 6000LM | SEF | 80 | 5942 | 6110 | 6278 | 6427 | 38.15 |
| | | | | 90 | 5178 | 5290 | 5439 | 5719 | 38.15 |
| | | | HEF | 80 | 5923 | 6008 | 6278 | 6294 | 35.54 |
| | | | | 90 | 4843 | 4911 | 5164 | 5164 | 35.54 |
| | | 8000LM | SEF | 80 | 7929 | 8153 | 8376 | 8575 | 52.32 |
| | | | | 90 | 6910 | 7059 | 7258 | 7631 | 52.32 |
| | | | HEF | 80 | 7903 | 8016 | 8376 | 8399 | 48.5 |
| | | | | 90 | 6462 | 6552 | 6890 | 6890 | 48.5 |
| | | 10000LM | SEF | 80 | 9808 | 10085 | 10362 | 10608 | 66.47 |
| | | | | 90 | 8548 | 8732 | 8978 | 9439 | 66.47 |
| | | | HEF | 80 | 9777 | 9916 | 10362 | 10390 | 60.89 |
| | | | | 90 | 7994 | 8106 | 8523 | 8523 | 60.89 |
| | | 14000LM | SEF | 80 | 14323 | 14727 | 15131 | 15491 | 94.78 |
| | | | | 90 | 12482 | 12752 | 13111 | 13784 | 94.78 |
| | | | HEF | 80 | 14277 | 14480 | 15131 | 15172 | 85.96 |
| | | | | 90 | 11674 | 11836 | 12447 | 12447 | 85.96 |
| | | 18000LM | SEF | 80 | 18458 | 18979 | 19500 | 19963 | 128.98 |
| | | | | 90 | 16086 | 16433 | 16896 | 17764 | 128.98 |
| | | | HEF | 80 | 18399 | 18661 | 19500 | 19552 | 116.92 |
| | | | | 90 | 15044 | 15254 | 16040 | 16040 | 116.92 |
| | | 20000LM | SEF | 80 | 20386 | 20962 | 21537 | 22048 | 146.83 |
| | | | | 90 | 17766 | 18150 | 18661 | 19619 | 146.83 |
| | | | HEF | 80 | 20321 | 20610 | 21537 | 21595 | 131.6 |
| | | | | 90 | 16616 | 16847 | 17716 | 17716 | 131.6 |

CLX OPERATIONAL DATA (continued)

| | Length | Nominal lumen package | Performance package | CRI | Delivered Lumens | | | | Wattage | |
|-----|--------|-----------------------|---------------------|------|-------------------|-------|-------|-------|---------|------|
| | | | | | Color Temperature | | | | | |
| | | | | | 3000K | 3500K | 4000K | 5000K | | |
| RDL | L24 | 1500LM | SEF | 80 | 1359 | 1397 | 1436 | 1470 | 10.85 | |
| | | | | 90 | 1184 | 1210 | 1244 | 1308 | 10.85 | |
| | | | HEF | 80 | 1355 | 1374 | 1436 | 1439 | 10.39 | |
| | | | | 90 | 1107 | 1123 | 1181 | 1181 | 10.39 | |
| | | 2000LM | SEF | 80 | 1875 | 1928 | 1981 | 2028 | 14.48 | |
| | | | | 90 | 1634 | 1670 | 1717 | 1805 | 14.48 | |
| | | | HEF | 80 | 1869 | 1896 | 1981 | 1987 | 13.46 | |
| | | | | 90 | 1528 | 1550 | 1630 | 1630 | 13.46 | |
| | | 2500LM | SEF | 80 | 2374 | 2441 | 2508 | 2567 | 18.41 | |
| | | | | 90 | 2069 | 2113 | 2173 | 2284 | 18.41 | |
| | | | HEF | 80 | 2366 | 2400 | 2508 | 2514 | 17.42 | |
| | | | | 90 | 1935 | 1962 | 2063 | 2063 | 17.42 | |
| | | 3500LM | SEF | 80 | 3192 | 3282 | 3372 | 3452 | 25.83 | |
| | | | | 90 | 2782 | 2842 | 2922 | 3072 | 25.83 | |
| | | | HEF | 80 | 3182 | 3227 | 3372 | 3381 | 25.04 | |
| | | | | 90 | 2602 | 2638 | 2774 | 2774 | 25.04 | |
| | | 4500LM | SEF | 80 | 4574 | 4703 | 4832 | 4947 | 38.7 | |
| | | | | 90 | 3986 | 4072 | 4187 | 4402 | 38.7 | |
| | | | HEF | 80 | 4560 | 4624 | 4832 | 4845 | 34.8 | |
| | | | | 90 | 3728 | 3780 | 3975 | 3975 | 34.8 | |
| | | 5000LM | SEF | 80 | 4860 | 4997 | 5134 | 5256 | 41.48 | |
| | | | | 90 | 4235 | 4327 | 4448 | 4677 | 41.48 | |
| | | | HEF | 80 | 4844 | 4913 | 5134 | 5148 | 38.11 | |
| | | | | 90 | 3961 | 4016 | 4223 | 4223 | 38.11 | |
| | L36 | 2250LM | SEF | 80 | 2188 | 2250 | 2311 | 2366 | 16.36 | |
| | | | | 90 | 1907 | 1948 | 2003 | 2106 | 16.36 | |
| | | | HEF | 80 | 2181 | 2212 | 2311 | 2318 | 15.47 | |
| | | | | 90 | 1783 | 1808 | 1901 | 1901 | 15.47 | |
| | | | 3000LM | SEF | 80 | 2843 | 2924 | 3004 | 3075 | 20.8 |
| | | | | | 90 | 2478 | 2531 | 2603 | 2736 | 20.8 |
| | | HEF | | 80 | 2834 | 2875 | 3004 | 3012 | 19.98 | |
| | | | | 90 | 2317 | 2350 | 2471 | 2471 | 19.98 | |
| | | 3750LM | SEF | 80 | 3639 | 3742 | 3845 | 3936 | 26.47 | |
| | | | | 90 | 3171 | 3240 | 3331 | 3502 | 26.47 | |
| | | | HEF | 80 | 3628 | 3679 | 3845 | 3855 | 25.09 | |
| | | 90 | | 2966 | 3007 | 3162 | 3162 | 25.09 | | |
| | | 5250LM | SEF | 80 | 4895 | 5033 | 5171 | 5294 | 39.9 | |
| | | | | 90 | 4265 | 4357 | 4480 | 4710 | 39.9 | |
| | | | HEF | 80 | 4879 | 4948 | 5171 | 5185 | 34.3 | |
| | | 90 | | 3989 | 4045 | 4253 | 4253 | 34.3 | | |
| | | 6750LM | SEF | 80 | 6250 | 6426 | 6602 | 6759 | 54.85 | |
| | | | | 90 | 5446 | 5564 | 5721 | 6014 | 54.85 | |
| | | | HEF | 80 | 6230 | 6318 | 6602 | 6620 | 47.97 | |
| | | | | 90 | 5094 | 5165 | 5431 | 5431 | 47.97 | |
| | | 7500LM | SEF | 80 | 6846 | 7039 | 7232 | 7404 | 62.6 | |
| | | | | 90 | 5966 | 6095 | 6266 | 6588 | 62.6 | |
| | | | HEF | 80 | 6824 | 6921 | 7232 | 7252 | 54.02 | |
| | | | | 90 | 5580 | 5657 | 5949 | 5949 | 54.02 | |

CLX OPERATIONAL DATA (continued)

| | Length | Nominal lumen package | Performance package | CRI | Delivered Lumens | | | | Wattage | |
|-----|--------|-----------------------|---------------------|-------|-------------------|-------|-------|--------|---------|-------|
| | | | | | Color Temperature | | | | | |
| | | | | | 3000K | 3500K | 4000K | 5000K | | |
| RDL | L48 | 3000LM | SEF | 80 | 2740 | 2817 | 2895 | 2963 | 20.32 | |
| | | | | 90 | 2388 | 2439 | 2508 | 2637 | 20.32 | |
| | | | HEF | 80 | 2731 | 2770 | 2895 | 2902 | 19.01 | |
| | | | | 90 | 2233 | 2264 | 2381 | 2381 | 19.01 | |
| | | 4000LM | SEF | 80 | 3661 | 3764 | 3868 | 3959 | 27.58 | |
| | | | | 90 | 3190 | 3259 | 3351 | 3523 | 27.58 | |
| | | | HEF | 80 | 3649 | 3701 | 3868 | 3878 | 24.75 | |
| | | | | 90 | 2984 | 3025 | 3181 | 3181 | 24.75 | |
| | | 5000LM | SEF | 80 | 4580 | 4710 | 4839 | 4954 | 34.8 | |
| | | | | 90 | 3992 | 4078 | 4193 | 4408 | 34.8 | |
| | | | HEF | 80 | 4566 | 4631 | 4839 | 4852 | 31.77 | |
| | | | | 90 | 3733 | 3785 | 3980 | 3980 | 31.77 | |
| | | 7000LM | SEF | 80 | 6635 | 6822 | 7009 | 7176 | 49.05 | |
| | | | | 90 | 5782 | 5907 | 6073 | 6385 | 49.05 | |
| | | | HEF | 80 | 6614 | 6708 | 7009 | 7028 | 44.67 | |
| | | | | 90 | 5408 | 5483 | 5766 | 5766 | 44.67 | |
| | | 9000LM | SEF | 80 | 8363 | 8599 | 8835 | 9045 | 63.99 | |
| | | | | 90 | 7288 | 7446 | 7655 | 8049 | 63.99 | |
| | | | HEF | 80 | 8336 | 8455 | 8835 | 8859 | 58.58 | |
| | | | | 90 | 6816 | 6911 | 7268 | 7268 | 58.58 | |
| | | 10000LM | SEF | 80 | 9347 | 9611 | 9874 | 10109 | 73.37 | |
| | | | | 90 | 8145 | 8321 | 8556 | 8995 | 73.37 | |
| | | | HEF | 80 | 9317 | 9450 | 9874 | 9901 | 66.27 | |
| | | | | 90 | 7618 | 7724 | 8122 | 8122 | 66.27 | |
| | L96 | 6000LM | SEF | 80 | 5393 | 5545 | 5697 | 5832 | 38.15 | |
| | | | | 90 | 4700 | 4801 | 4936 | 5190 | 38.15 | |
| | | | HEF | 80 | 5375 | 5452 | 5697 | 5712 | 35.54 | |
| | | | | 90 | 4395 | 4457 | 4686 | 4686 | 35.54 | |
| | | | 8000LM | SEF | 80 | 7196 | 7399 | 7602 | 7782 | 52.32 |
| | | | | | 90 | 6271 | 6406 | 6587 | 6925 | 52.32 |
| | | HEF | | 80 | 7173 | 7275 | 7602 | 7622 | 48.5 | |
| | | | 90 | 5865 | 5946 | 6253 | 6253 | 48.5 | | |
| | | 10000LM | SEF | 80 | 8902 | 9153 | 9404 | 9627 | 66.47 | |
| | | | | 90 | 7757 | 7925 | 8148 | 8567 | 66.47 | |
| | | | HEF | 80 | 8873 | 8999 | 9404 | 9429 | 60.89 | |
| | | 90 | | 7255 | 7356 | 7735 | 7735 | 60.89 | | |
| | | 14000LM | SEF | 80 | 12999 | 13366 | 13732 | 14058 | 94.78 | |
| | | | | 90 | 11328 | 11573 | 11899 | 12510 | 94.78 | |
| | | | HEF | 80 | 12957 | 13142 | 13732 | 13769 | 85.96 | |
| | | 90 | | 10594 | 10742 | 11296 | 11296 | 85.96 | | |
| | | 18000LM | SEF | 80 | 16751 | 17224 | 17697 | 18117 | 128.98 | |
| | | | | 90 | 14598 | 14913 | 15334 | 16121 | 128.98 | |
| | | | HEF | 80 | 16698 | 16936 | 17697 | 17744 | 116.92 | |
| | | 90 | | 13653 | 13843 | 14557 | 14557 | 116.92 | | |
| | | 20000LM | SEF | 80 | 18501 | 19023 | 19545 | 20009 | 146.83 | |
| | | | | 90 | 16123 | 16471 | 16935 | 17805 | 146.83 | |
| | | | HEF | 80 | 18442 | 18705 | 19545 | 19598 | 131.6 | |
| | | 90 | | 15079 | 15290 | 16078 | 16078 | 131.6 | | |

CLX OPERATIONAL DATA (continued)

| | Length | Nominal lumen package | Performance package | CRI | Delivered Lumens | | | | Wattage | |
|-----|--------|-----------------------|---------------------|------|-------------------|-------|-------|-------|---------|------|
| | | | | | Color Temperature | | | | | |
| | | | | | 3000K | 3500K | 4000K | 5000K | | |
| FDL | L24 | 1500LM | SEF | 80 | 1320 | 1358 | 1395 | 1428 | 10.85 | |
| | | | | 90 | 1151 | 1175 | 1208 | 1271 | 10.85 | |
| | | | HEF | 80 | 1316 | 1335 | 1395 | 1399 | 10.39 | |
| | | | | 90 | 1076 | 1091 | 1147 | 1147 | 10.39 | |
| | | 2000LM | SEF | 80 | 1822 | 1874 | 1925 | 1971 | 14.48 | |
| | | | | 90 | 1588 | 1622 | 1668 | 1754 | 14.48 | |
| | | | HEF | 80 | 1816 | 1842 | 1925 | 1930 | 13.46 | |
| | | | | 90 | 1485 | 1506 | 1583 | 1583 | 13.46 | |
| | | 2500LM | SEF | 80 | 2306 | 2371 | 2436 | 2494 | 18.41 | |
| | | | | 90 | 2010 | 2053 | 2111 | 2219 | 18.41 | |
| | | | HEF | 80 | 2299 | 2332 | 2436 | 2443 | 17.42 | |
| | | | | 90 | 1880 | 1906 | 2004 | 2004 | 17.42 | |
| | | 3500LM | SEF | 80 | 3102 | 3189 | 3277 | 3354 | 25.83 | |
| | | | | 90 | 2703 | 2761 | 2839 | 2985 | 25.83 | |
| | | | HEF | 80 | 3092 | 3136 | 3277 | 3285 | 25.04 | |
| | | | | 90 | 2528 | 2563 | 2695 | 2695 | 25.04 | |
| | | 4500LM | SEF | 80 | 4444 | 4570 | 4695 | 4807 | 38.7 | |
| | | | | 90 | 3873 | 3957 | 4068 | 4277 | 38.7 | |
| | | | HEF | 80 | 4430 | 4493 | 4695 | 4708 | 34.8 | |
| | | | | 90 | 3622 | 3673 | 3862 | 3862 | 34.8 | |
| | | 5000LM | SEF | 80 | 4722 | 4855 | 4988 | 5107 | 41.48 | |
| | | | | 90 | 4115 | 4204 | 4322 | 4544 | 41.48 | |
| | | | HEF | 80 | 4707 | 4774 | 4988 | 5002 | 38.11 | |
| | | | | 90 | 3848 | 3902 | 4103 | 4103 | 38.11 | |
| | L36 | 2250LM | SEF | 80 | 2126 | 2186 | 2246 | 2299 | 16.36 | |
| | | | | 90 | 1852 | 1892 | 1946 | 2046 | 16.36 | |
| | | | HEF | 80 | 2119 | 2149 | 2246 | 2252 | 15.47 | |
| | | | | 90 | 1732 | 1757 | 1847 | 1847 | 15.47 | |
| | | | 3000LM | SEF | 80 | 2762 | 2840 | 2918 | 2988 | 20.8 |
| | | | | | 90 | 2407 | 2459 | 2529 | 2659 | 20.8 |
| | | HEF | | 80 | 2754 | 2793 | 2918 | 2926 | 19.98 | |
| | | | 90 | 2251 | 2283 | 2401 | 2401 | 19.98 | | |
| | | 3750LM | SEF | 80 | 3536 | 3636 | 3735 | 3824 | 26.47 | |
| | | | | 90 | 3081 | 3148 | 3237 | 3403 | 26.47 | |
| | | | HEF | 80 | 3525 | 3575 | 3735 | 3745 | 25.09 | |
| | | 90 | | 2882 | 2922 | 3073 | 3073 | 25.09 | | |
| | | 5250LM | SEF | 80 | 4755 | 4890 | 5024 | 5143 | 39.9 | |
| | | | | 90 | 4144 | 4234 | 4353 | 4577 | 39.9 | |
| | | | HEF | 80 | 4740 | 4808 | 5024 | 5037 | 34.3 | |
| | | 90 | | 3876 | 3930 | 4132 | 4132 | 34.3 | | |
| | | 6750LM | SEF | 80 | 6072 | 6243 | 6415 | 6567 | 54.85 | |
| | | | | 90 | 5292 | 5406 | 5558 | 5844 | 54.85 | |
| | | | HEF | 80 | 6053 | 6139 | 6415 | 6432 | 47.97 | |
| | | 90 | | 4949 | 5018 | 5276 | 5276 | 47.97 | | |
| | | 7500LM | SEF | 80 | 6651 | 6839 | 7027 | 7194 | 62.6 | |
| | | | | 90 | 5796 | 5922 | 6088 | 6401 | 62.6 | |
| | | | HEF | 80 | 6630 | 6725 | 7027 | 7046 | 54.02 | |
| | | 90 | | 5421 | 5497 | 5780 | 5780 | 54.02 | | |

CLX OPERATIONAL DATA (continued)

| | Length | Nominal lumen package | Performance package | CRI | Delivered Lumens | | | | Wattage |
|-----|--------|-----------------------|---------------------|-----|-------------------|-------|-------|-------|---------|
| | | | | | Color Temperature | | | | |
| | | | | | 3000K | 3500K | 4000K | 5000K | |
| FDL | L48 | 3000LM | SEF | 80 | 2662 | 2737 | 2812 | 2879 | 20.32 |
| | | | | 90 | 2320 | 2370 | 2437 | 2562 | 20.32 |
| | | | HEF | 80 | 2654 | 2691 | 2812 | 2820 | 19.01 |
| | | | | 90 | 2170 | 2200 | 2313 | 2313 | 19.01 |
| | | 4000LM | SEF | 80 | 3557 | 3657 | 3758 | 3847 | 27.58 |
| | | | | 90 | 3100 | 3167 | 3256 | 3423 | 27.58 |
| | | | HEF | 80 | 3546 | 3596 | 3758 | 3768 | 24.75 |
| | | | | 90 | 2899 | 2939 | 3091 | 3091 | 24.75 |
| | | 5000LM | SEF | 80 | 4450 | 4576 | 4701 | 4813 | 34.8 |
| | | | | 90 | 3878 | 3962 | 4073 | 4283 | 34.8 |
| | | | HEF | 80 | 4436 | 4499 | 4701 | 4714 | 31.77 |
| | | | | 90 | 3627 | 3678 | 3867 | 3867 | 31.77 |
| | | 7000LM | SEF | 80 | 6446 | 6628 | 6810 | 6972 | 49.05 |
| | | | | 90 | 5618 | 5739 | 5901 | 6204 | 49.05 |
| | | | HEF | 80 | 6426 | 6517 | 6810 | 6829 | 44.67 |
| | | | | 90 | 5254 | 5327 | 5602 | 5602 | 44.67 |
| | | 9000LM | SEF | 80 | 8126 | 8355 | 8584 | 8788 | 63.99 |
| | | | | 90 | 7081 | 7234 | 7438 | 7820 | 63.99 |
| | | | HEF | 80 | 8100 | 8215 | 8584 | 8607 | 58.58 |
| | | | | 90 | 6623 | 6715 | 7061 | 7061 | 58.58 |
| | | 10000LM | SEF | 80 | 9081 | 9338 | 9594 | 9822 | 73.37 |
| | | | | 90 | 7914 | 8085 | 8313 | 8740 | 73.37 |
| | | | HEF | 80 | 9052 | 9181 | 9594 | 9620 | 66.27 |
| | | | | 90 | 7402 | 7505 | 7892 | 7892 | 66.27 |
| | L96 | 6000LM | SEF | 80 | 5240 | 5387 | 5535 | 5667 | 38.15 |
| | | | | 90 | 4566 | 4665 | 4796 | 5042 | 38.15 |
| | | | HEF | 80 | 5223 | 5297 | 5535 | 5550 | 35.54 |
| | | | | 90 | 4270 | 4330 | 4553 | 4553 | 35.54 |
| | | 8000LM | SEF | 80 | 6991 | 7189 | 7386 | 7561 | 52.32 |
| | | | | 90 | 6093 | 6224 | 6400 | 6728 | 52.32 |
| | | | HEF | 80 | 6969 | 7068 | 7386 | 7406 | 48.5 |
| | | | | 90 | 5698 | 5778 | 6075 | 6075 | 48.5 |
| | | 10000LM | SEF | 80 | 8649 | 8893 | 9137 | 9354 | 66.47 |
| | | | | 90 | 7537 | 7700 | 7917 | 8323 | 66.47 |
| | | | HEF | 80 | 8621 | 8744 | 9137 | 9161 | 60.89 |
| | | | | 90 | 7049 | 7147 | 7516 | 7516 | 60.89 |
| | | 14000LM | SEF | 80 | 12630 | 12986 | 13342 | 13659 | 94.78 |
| | | | | 90 | 11006 | 11244 | 11561 | 12154 | 94.78 |
| | | | HEF | 80 | 12589 | 12768 | 13342 | 13378 | 85.96 |
| | | | | 90 | 10293 | 10437 | 10975 | 10975 | 85.96 |
| | | 18000LM | SEF | 80 | 16276 | 16735 | 17194 | 17602 | 128.98 |
| | | | | 90 | 14184 | 14490 | 14898 | 15663 | 128.98 |
| | | | HEF | 80 | 16223 | 16454 | 17194 | 17240 | 116.92 |
| | | | | 90 | 13265 | 13450 | 14143 | 14143 | 116.92 |
| | | 20000LM | SEF | 80 | 17976 | 18483 | 18990 | 19441 | 146.83 |
| | | | | 90 | 15665 | 16004 | 16454 | 17300 | 146.83 |
| | | | HEF | 80 | 17918 | 18173 | 18990 | 19041 | 131.6 |
| | | | | 90 | 14651 | 14855 | 15621 | 15621 | 131.6 |

CLX OPERATIONAL DATA (continued)

| | Length | Nominal lumen package | Performance package | CRI | Delivered Lumens | | | | Wattage | |
|-----|--------|-----------------------|---------------------|------|-------------------|-------|-------|-------|---------|------|
| | | | | | Color Temperature | | | | | |
| | | | | | 3000K | 3500K | 4000K | 5000K | | |
| WDL | L24 | 1500LM | SEF | 80 | 1377 | 1415 | 1454 | 1489 | 10.85 | |
| | | | | 90 | 1200 | 1226 | 1260 | 1325 | 10.85 | |
| | | | HEF | 80 | 1372 | 1392 | 1454 | 1458 | 10.39 | |
| | | | | 90 | 1122 | 1138 | 1196 | 1196 | 10.39 | |
| | | 2000LM | SEF | 80 | 1900 | 1953 | 2007 | 2055 | 14.48 | |
| | | | | 90 | 1656 | 1691 | 1739 | 1828 | 14.48 | |
| | | | HEF | 80 | 1894 | 1921 | 2007 | 2012 | 13.46 | |
| | | | | 90 | 1548 | 1570 | 1651 | 1651 | 13.46 | |
| | | 2500LM | SEF | 80 | 2405 | 2472 | 2540 | 2601 | 18.41 | |
| | | | | 90 | 2095 | 2141 | 2201 | 2314 | 18.41 | |
| | | | HEF | 80 | 2397 | 2431 | 2540 | 2547 | 17.42 | |
| | | | | 90 | 1960 | 1987 | 2090 | 2090 | 17.42 | |
| | | 3500LM | SEF | 80 | 3234 | 3325 | 3416 | 3497 | 25.83 | |
| | | | | 90 | 2818 | 2879 | 2960 | 3112 | 25.83 | |
| | | | HEF | 80 | 3223 | 3269 | 3416 | 3426 | 25.04 | |
| | | | | 90 | 2636 | 2672 | 2810 | 2810 | 25.04 | |
| | | 4500LM | SEF | 80 | 4634 | 4765 | 4895 | 5012 | 38.7 | |
| | | | | 90 | 4038 | 4125 | 4242 | 4459 | 38.7 | |
| | | | HEF | 80 | 4619 | 4685 | 4895 | 4908 | 34.8 | |
| | | | | 90 | 3777 | 3829 | 4027 | 4027 | 34.8 | |
| | | 5000LM | SEF | 80 | 4923 | 5062 | 5201 | 5324 | 41.48 | |
| | | | | 90 | 4290 | 4383 | 4506 | 4738 | 41.48 | |
| | | | HEF | 80 | 4907 | 4977 | 5201 | 5215 | 38.11 | |
| | | | | 90 | 4012 | 4068 | 4278 | 4278 | 38.11 | |
| | L36 | 2250LM | SEF | 80 | 2216 | 2279 | 2341 | 2397 | 16.36 | |
| | | | | 90 | 1931 | 1973 | 2029 | 2133 | 16.36 | |
| | | | HEF | 80 | 2209 | 2241 | 2341 | 2348 | 15.47 | |
| | | | | 90 | 1806 | 1832 | 1926 | 1926 | 15.47 | |
| | | | 3000LM | SEF | 80 | 2880 | 2962 | 3043 | 3115 | 20.8 |
| | | | | | 90 | 2510 | 2564 | 2636 | 2772 | 20.8 |
| | | HEF | | 80 | 2871 | 2912 | 3043 | 3051 | 19.98 | |
| | | | | 90 | 2347 | 2380 | 2503 | 2503 | 19.98 | |
| | | 3750LM | SEF | 80 | 3687 | 3791 | 3895 | 3987 | 26.47 | |
| | | | | 90 | 3213 | 3282 | 3375 | 3548 | 26.47 | |
| | | | HEF | 80 | 3675 | 3727 | 3895 | 3905 | 25.09 | |
| | | 90 | | 3005 | 3047 | 3204 | 3204 | 25.09 | | |
| | | 5250LM | SEF | 80 | 4958 | 5098 | 5238 | 5362 | 39.9 | |
| | | | | 90 | 4321 | 4414 | 4539 | 4772 | 39.9 | |
| | | | HEF | 80 | 4942 | 5013 | 5238 | 5252 | 34.3 | |
| | | 90 | | 4041 | 4097 | 4309 | 4309 | 34.3 | | |
| | | 6750LM | SEF | 80 | 6331 | 6510 | 6688 | 6847 | 54.85 | |
| | | | | 90 | 5517 | 5636 | 5795 | 6093 | 54.85 | |
| | | | HEF | 80 | 6311 | 6401 | 6688 | 6706 | 47.97 | |
| | | 90 | | 5160 | 5232 | 5502 | 5502 | 47.97 | | |
| | | 7500LM | SEF | 80 | 6935 | 7131 | 7326 | 7500 | 62.6 | |
| | | | | 90 | 6044 | 6174 | 6348 | 6674 | 62.6 | |
| | | | HEF | 80 | 6913 | 7011 | 7326 | 7346 | 54.02 | |
| | | 90 | | 5652 | 5731 | 6027 | 6027 | 54.02 | | |

CLX OPERATIONAL DATA (continued)

| | Length | Nominal lumen package | Performance package | CRI | Delivered Lumens | | | | Wattage |
|-----|--------|-----------------------|---------------------|-----|-------------------|-------|-------|-------|---------|
| | | | | | Color Temperature | | | | |
| | | | | | 3000K | 3500K | 4000K | 5000K | |
| WDL | L48 | 3000LM | SEF | 80 | 2776 | 2854 | 2932 | 3002 | 20.32 |
| | | | | 90 | 2419 | 2471 | 2541 | 2671 | 20.32 |
| | | | HEF | 80 | 2767 | 2806 | 2932 | 2940 | 19.01 |
| | | | | 90 | 2262 | 2294 | 2412 | 2412 | 19.01 |
| | | 4000LM | SEF | 80 | 3709 | 3813 | 3918 | 4011 | 27.58 |
| | | | | 90 | 3232 | 3302 | 3395 | 3569 | 27.58 |
| | | | HEF | 80 | 3697 | 3749 | 3918 | 3929 | 24.75 |
| | | | | 90 | 3023 | 3065 | 3223 | 3223 | 24.75 |
| | | 5000LM | SEF | 80 | 4640 | 4771 | 4902 | 5018 | 34.8 |
| | | | | 90 | 4044 | 4131 | 4247 | 4465 | 34.8 |
| | | | HEF | 80 | 4625 | 4691 | 4902 | 4915 | 31.77 |
| | | | | 90 | 3782 | 3834 | 4032 | 4032 | 31.77 |
| | | 7000LM | SEF | 80 | 6721 | 6911 | 7101 | 7269 | 49.05 |
| | | | | 90 | 5857 | 5984 | 6152 | 6469 | 49.05 |
| | | | HEF | 80 | 6700 | 6795 | 7101 | 7120 | 44.67 |
| | | | | 90 | 5478 | 5554 | 5841 | 5841 | 44.67 |
| | | 9000LM | SEF | 80 | 8472 | 8711 | 8950 | 9163 | 63.99 |
| | | | | 90 | 7383 | 7543 | 7755 | 8154 | 63.99 |
| | | | HEF | 80 | 8445 | 8565 | 8950 | 8974 | 58.58 |
| | | | | 90 | 6905 | 7001 | 7362 | 7362 | 58.58 |
| | | 10000LM | SEF | 80 | 9469 | 9736 | 10003 | 10240 | 73.37 |
| | | | | 90 | 8252 | 8430 | 8667 | 9112 | 73.37 |
| | | | HEF | 80 | 9438 | 9573 | 10003 | 10030 | 66.27 |
| | | | | 90 | 7717 | 7825 | 8228 | 8228 | 66.27 |
| | L96 | 6000LM | SEF | 80 | 5463 | 5617 | 5771 | 5908 | 38.15 |
| | | | | 90 | 4761 | 4864 | 5001 | 5258 | 38.15 |
| | | | HEF | 80 | 5445 | 5523 | 5771 | 5787 | 35.54 |
| | | | | 90 | 4452 | 4515 | 4747 | 4747 | 35.54 |
| | | 8000LM | SEF | 80 | 7289 | 7495 | 7701 | 7884 | 52.32 |
| | | | | 90 | 6353 | 6490 | 6672 | 7015 | 52.32 |
| | | | HEF | 80 | 7266 | 7370 | 7701 | 7722 | 48.5 |
| | | | | 90 | 5941 | 6024 | 6334 | 6334 | 48.5 |
| | | 10000LM | SEF | 80 | 9017 | 9272 | 9526 | 9752 | 66.47 |
| | | | | 90 | 7858 | 8028 | 8254 | 8678 | 66.47 |
| | | | HEF | 80 | 8988 | 9117 | 9526 | 9552 | 60.89 |
| | | | | 90 | 7349 | 7452 | 7836 | 7836 | 60.89 |
| | | 14000LM | SEF | 80 | 13168 | 13540 | 13911 | 14241 | 94.78 |
| | | | | 90 | 11476 | 11723 | 12054 | 12673 | 94.78 |
| | | | HEF | 80 | 13126 | 13313 | 13911 | 13949 | 85.96 |
| | | | | 90 | 10732 | 10882 | 11443 | 11443 | 85.96 |
| | | 18000LM | SEF | 80 | 16970 | 17448 | 17927 | 18353 | 128.98 |
| | | | | 90 | 14788 | 15108 | 15533 | 16331 | 128.98 |
| | | | HEF | 80 | 16915 | 17156 | 17927 | 17975 | 116.92 |
| | | | | 90 | 13831 | 14024 | 14746 | 14746 | 116.92 |
| | | 20000LM | SEF | 80 | 18742 | 19271 | 19800 | 20270 | 146.83 |
| | | | | 90 | 16333 | 16686 | 17156 | 18037 | 146.83 |
| | | | HEF | 80 | 18682 | 18948 | 19800 | 19853 | 131.6 |
| | | | | 90 | 15276 | 15489 | 16287 | 16287 | 131.6 |

CLX CHARACTERISTICS

| Nominal Lumen Package | Length | Wattage | | | | | | | | Length | Width | Depth | Comparable Light Source |
|--------------------------------|--------|---------------------|-------|-------|-------|-----------------|-------|-------|-------|--------|-------|-------|---|
| | | Standard efficiency | | | | High efficiency | | | | | | | |
| | | 120V | 277V | 347V | 480V | 120V | 277V | 347V | 480V | | | | |
| Dimensions are shown in inches | | | | | | | | | | | | | |
| 2500LM | 24" | 19.9 | 19.9 | 25.9 | 25.9 | 18.5 | 18.5 | 24.5 | 24.5 | 24 | 3.5 | 3.75 | 1-lamp 32WT8, 1-lamp 54W T5HO, 50W HID |
| 5000LM | 24" | 41.9 | 41.9 | 47.9 | 47.9 | 37.9 | 37.9 | 43.9 | 43.9 | 24 | 3.5 | 3.75 | 2-lamp 32WT8, 1-lamp 54W T5HO, 70W HID |
| 3750LM | 36" | 28.1 | 28.1 | 34.1 | 34.1 | 27.0 | 27.0 | 33.0 | 33.0 | 36 | 3.5 | 3.75 | 1-lamp 32WT8, 1-lamp 54W T5HO, 50W HID |
| 7500LM | 36" | 62.9 | 62.9 | 68.9 | 68.9 | 56.8 | 56.8 | 62.8 | 62.8 | 36 | 3.5 | 3.75 | 2-lamp 32WT8, 1-lamp 54W T5HO, 70W HID |
| 5000LM | 48" | 35.4 | 35.4 | 41.4 | 41.4 | 32.9 | 32.9 | 38.9 | 38.9 | 48 | 3.5 | 3.75 | 2-lamp 32WT8, 1-lamp 54W T5HO, 70W HID |
| 10000LM | 48" | 77.1 | 77.1 | 83.1 | 83.1 | 70.4 | 70.4 | 76.4 | 76.4 | 48 | 3.5 | 3.75 | 3-lamp 32WT8, 2-lamp 54W T5HO, 100W HID |
| 10000LM | 96" | 70.8 | 70.8 | 76.8 | 76.8 | 65.8 | 65.8 | 71.8 | 71.8 | 96 | 3.5 | 3.75 | 3-lamp 32WT8, 2-lamp 54W T5HO, 100W HID |
| 20000LM | 96" | 154.2 | 154.2 | 160.2 | 160.2 | 140.8 | 140.8 | 146.8 | 146.8 | 96 | 3.5 | 3.75 | 6-lamp 32WT8, 4-lamp 54T5HO, 200W HID |

AMBIENT TEMPERATURE RATINGS

| Driver Package | | GZ10 | | | EZ1 or EOHN | | | Any Driver | |
|----------------|---------------|----------------|------------------|---------------------------------|----------------|-------|---------------|-----------------------------|------------------|
| Length | Lumen package | Direct Surface | THCLX/ Suspended | HA Option (Direct or Suspended) | Direct Surface | THCLX | Suspended 18" | Xpoint/ BGTD Direct Surface | PS1050 Suspended |
| L24 | 1500LM | 40C | 40C | N/A | 35C | 35C | 35C | N/A | N/A |
| | 2000LM | 40C | 40C | | 35C | 35C | 35C | | |
| | 2500LM | 40C | 40C | | 35C | 35C | 35C | | |
| | 3000LM | 40C | 40C | | 40C | 40C | 40C | | |
| | 4500LM | 40C | 40C | | 35C | 35C | 40C | | |
| | 5000LM | 40C | 40C | | 25C | 30C | 35C | | |
| L36 | 2250LM | 40C | 40C | | 40C | 40C | 40C | | |
| | 3000LM | 40C | 40C | | 40C | 40C | 40C | | |
| | 3750LM | 40C | 40C | | 40C | 40C | 40C | | |
| | 5250LM | 40C | 40C | | 35C | 35C | 40C | | |
| | 6750LM | 30C | 40C | | 35C | 35C | 40C | | |
| | 7500LM | 30C | 40C | | 25C | 30C | 35C | | |
| L48 | 3000LM | 40C | 40C | 50C | 40C | 40C | 40C | 35C | 25C |
| | 4000LM | 40C | 40C | 50C | 40C | 40C | 40C | | |
| | 5000LM | 40C | 40C | 50C | 35C | 35C | 40C | | |
| | 7000LM | 30C | 40C | N/A | 35C | 35C | 40C | | |
| | 9000LM | 30C | 40C | | 25C | 30C | 35C | | |
| | 10000LM | 30C | 40C | | 25C | 30C | 35C | | |
| L96 | 6000LM | 40C | 40C | | 50C | 35C | 35C | | |
| | 8000LM | 30C | 40C | 50C | 35C | 35C | 40C | | |
| | 10000LM | 30C | 40C | 50C | 25C | 30C | 35C | | |
| | 14000LM | 40C | 40C | N/A | 35C | 35C | 40C | | |
| | 18000LM | 30C | 40C | | 25C | 30C | 35C | | |
| | 20000LM | 30C | 40C | | 25C | 30C | 35C | | |

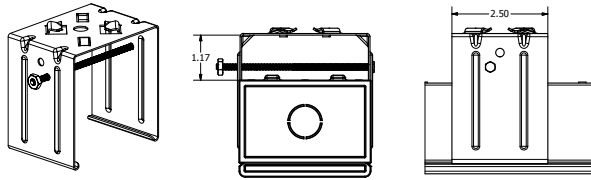
DIMENSIONS

All dimensions are in inches (centimeters) unless otherwise indicated.
Dimensions may vary with options or accessories.

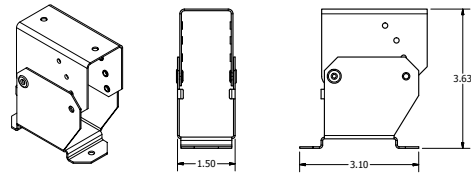
PALLET DIMENSIONS

| Length | Approx Weight | Fixtures per pallet | Pallet Dims (L X W X H) |
|--------|---------------|---------------------|-------------------------|
| L24 | 4 lb | 100 | 54x46x37 |
| L36 | 5 lb | 80 | 54x46x37 |
| L48 | 7.5 lb | 64 | 54x46x37 |
| L96 | 14 lb | 64 | 98x46x37 |

THCLX - SHIPS TWO PER ORDER,
UTILIZES A #8 HEX HEAD SCREW AND NUT
FIXTURE SITS 1.3 INCHES FROM STRUCTURE WHEN MOUNTED

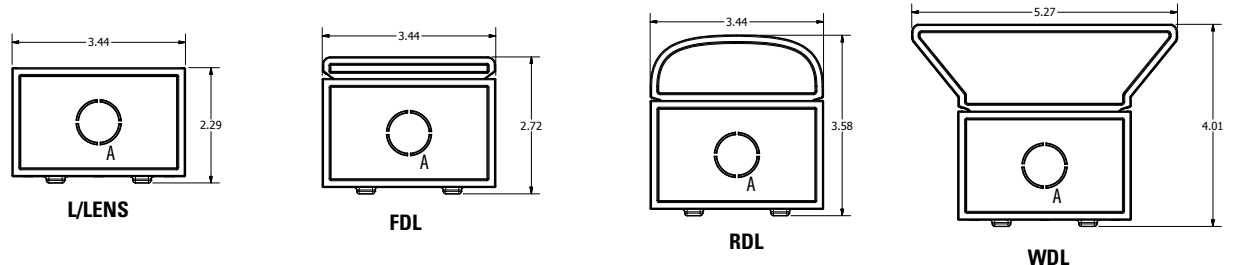
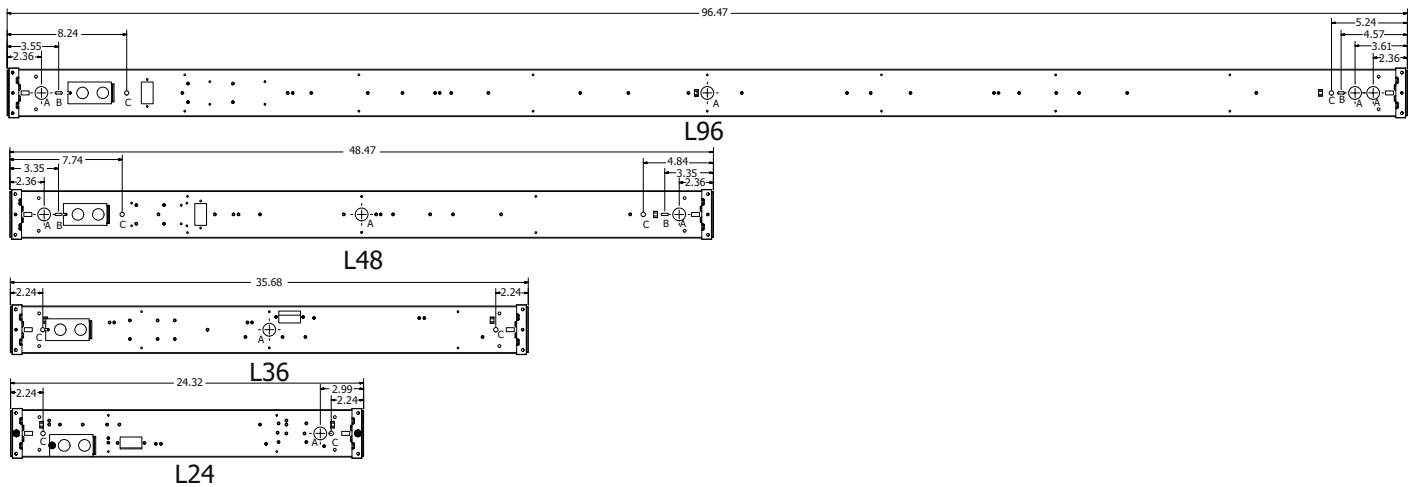


CLXANGBKT - SHIPS TWO PER ORDER
HOLES TO MOUNTING STRUCTURE ARE 0.175" DIA, 2.5" APART
FIXTURE SITS APPROXIMATELY 3.5" FROM STRUCTURE
WHEN MOUNTED HORIZONTAL TO STRUCTURE



INTEGRATED SENSOR ADDS 4.75 INCHES TO STANDALONE FIXTURE LENGTH
HOUSING END CAP ADDS 0.236 INCHES TO FIXTURE LENGTH PER SIDE. DIMENSIONS BELOW INCLUDE ENDCAPS.

A - 7/8" KNOCK OUT
B - 0.5" by 0.16" SLOT
C - 0.3" DIA HOLE



PHOTOMETRICS

See www.lithonia.com.

RRL - RELOC®-Ready Luminaire

- RRL connectors can be used with Quick-Flex®, System 820 and OnePass® systems.
- Load side of connector factory installed to luminaire.
- 4-pole mating connector with push-in terminations allows for simple installation.
- Touch-safe design on both halves meets UL/CSA requirement.
- Wiping contact design allows safe disconnect under load.



ORDERING INFORMATION

Lead times will vary depending on options selected. Consult with your sales representative.

Example: RRLA

| Series | Wiring instructions |
|----------------------------|---|
| RRL RELOC®-ready luminaire | A Hot conductor wired to position #1 (phase A) B Hot conductor wired to position #2 (phase B) C Hot conductor wired to position #3 (phase C) ¹ |

Compatible RELOC® Cables for Industrial Luminaires (ordered and shipped separately)



Notes

- ¹ C, ABE, and C12S options are not used with Quick-Flex QFC, QSFC, QPT, and QD.

PRODUCT INFORMATION

Advanced plug-in system with two-circuit capability. Available on industrial and strip products and a variety of architectural products mounted in continuous rows. 1, 2, 3 and 4-lamp fixtures. PLR22 (2-circuit) and crossover harness switches hot circuit serving next fixture in row. Reduces fixture types on job for alternating circuit applications (see example below.)

Easy one-step installation, saves up to 35% on labor costs. Expanded switching flexibility helps save energy.

Rows can be 50% longer with two-circuit systems. Polarized, lock-together nylon connectors prevent miswiring in the field. #12 THHN conductor, rated 600V, 90°C. White neutral wire included. Grounding accomplished by fixture in-row connectors.

CSA certified systems available with up to 2 circuits. G ground required.

Note: Specifications subject to change without notice.



Wiring
PLR

Advanced 1 or 2-Circuit Plug-In

ORDERING INFORMATION Lead times will vary depending on options selected. Consult with your sales representative.

| Series | Number of hot wires | Branch circuits | Dimming | Ground |
|--------|-----------------------------|---|------------------------|----------|
| PLR | (blank) Not required for 22 | <u>Circuits to which ballast is connected</u> | LV Low-voltage dimming | G Ground |
| PLR22 | 1 Black | (blank) Not required for 22 | | |
| | 2 Black and red | A Black wire | | |
| | | B Red wire | | |
| | | <u>Emergency circuit connected</u> | | |
| | | (blank) No emergency circuit | | |
| | | ELA Emergency circuit wired to black wire | | |
| | | ELB Emergency circuit wired to red wire | | |

Typical Applications

- Multiple-circuit and single-circuit for longer continuous rows
- Multiple-circuit with alternating fixtures on separate circuits and 2-circuit (PLR 22)
- Multiple circuit with night-lights located along row as desired

PRODUCT INFORMATION

A standard occupancy time delay is also present to ensure lights turn off (once minimum on timer has also elapsed) if no occupancy is detected.

This timer is factory set at 10 minutes to promote energy savings, but is adjustable between 30 seconds and 30 minutes. These adjustments may be done through the unit's push-button.

FEATURES

- Four interchangeable lenses - high mount 360°, low mount 360°, high mount aisleway, and small motion 360°.
- Integrated mounting bracket drops lens down 3" from chase nipple - no bracket accessory required.
- 100% digital PIR detection - provides excellent RF immunity

Note: Specifications subject to change without notice.

Passive Infrared Indoor Occupancy Sensor



LSXR

Single Relay



ORDERING INFORMATION Lead times will vary depending on options selected. Consult with your sales representative.

Example: LSXR 10 ADC HVOLT 30M

| Series | Lens option | Dimming/photocell |
|---|------------------------|---|
| LSXR Passive Infrared Indoor Occupancy Sensor | (blank) No lens | (blank) None |
| | 6 High mount, 360° | HL High/low occupancy operation |
| | 10 Low mount, 360° | P Switching photocell (on/off) |
| | 50 High mount aisleway | ADC Dimming and switching photocell |
| | 9 Small motion, 360° | ANL Dimming and switching photocell with high/low occupancy operation |

| Voltage | Max dim level | Min dim level | Lead length | Temp humidity | Default time delay |
|-----------------------------|----------------|--|-------------|--------------------|--|
| (blank) 120-277 VAC (MVOLT) | (blank) 10 VDC | (blank) Minimum dimming level of ballast | (blank) 14" | (blank) None | (blank) 10 minutes (with minimum 15 minutes on time) |
| HVOLT 347-480 VAC | 9H 9 VDC | 1V 1 VDC | 42L 42" | LT Low temperature | 5M 5 minutes (LED only) |
| | 8H 8 VDC | 2V 2 VDC | | | 15M 15 minutes |
| | 7H 7 VDC | 3V 3 VDC | | | 20M 20 minutes |
| | | 4V 4 VDC | | | 30M 30 minutes |
| | | 5V 5 VDC | | | |
| | | 6V 6 VDC | | | |

For additional information see www.lithonia.com

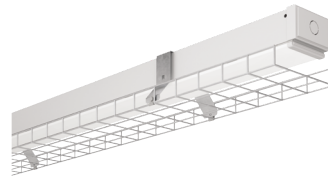
OPTIONS AND ACCESSORIES



Narrow reflector
Ships separately from fixture.
Order as:
CLXRN24 ___
CLXRN36 ___
CLXRN48 ___
CLXRN96 ___



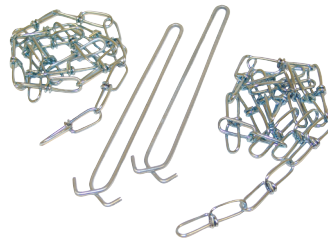
Wide decorative reflector
Ships separately from fixture.
Order as:
CLXRW24 ___
CLXRW36 ___
CLXRW48 ___
CLXRW96 ___



Wireguard
Ships separately from fixture:
96" fixture requires two WGCLX48.
Order as:
WGCLX24 ___
WGCLX36 ___
WGCLX48 ___



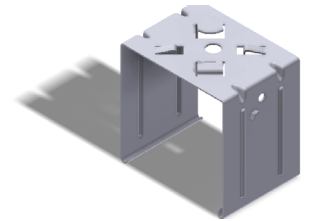
Aircraft Cable with Canopy
Available in 120" or 240"
Order as:
ZAC120
ZAC240



HANGER CHAIN
36" chain with Y hanger. ships as a pair
Order as:
HC36



ZACVH HANGER
10' Aircraft cable with Y hanger.
Order as:
ZACVH



Tong hanger
Ships as a pair
Order As:
THCLX ___