
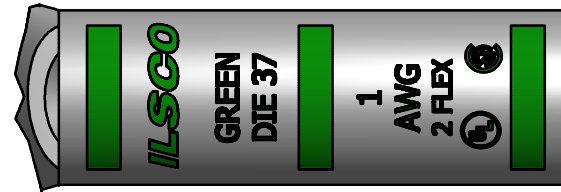
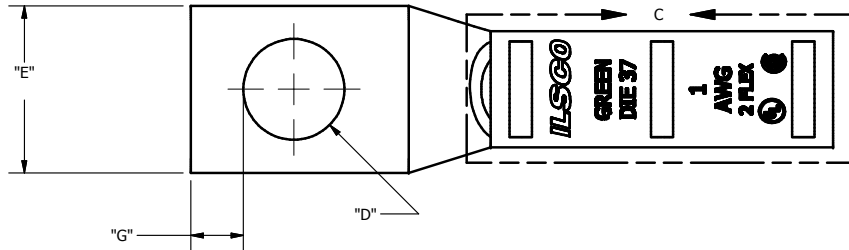
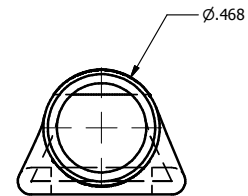
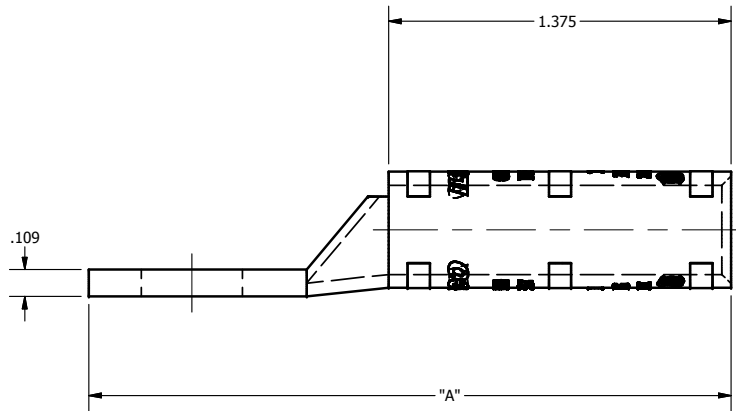


SCREW: NONE	MATERIAL: COPPER	REV: G	 <small>INTERNATIONAL SURFACE COATING</small> 800-776-9775 www.ilSCO.com		
CAT. NO.: SEE CHART	PLATING: EL-TIN	DRAWN BY:DW			SCALE: 2:1
INFORMATION SHEET:FORM 157	MARKING: SEE CHART	DATE:7/19/2007			SIZE: B
			DWG NO:	Y0613-S	
			SHEET:	1 OF 1	



DETAIL C  
TOP & BOTTOM INK MARKING



CATALOG NUMBER	"A"	"C"	"D"	"E"	"G"	TANG MARKING
CLWS-1-10	2.267	0.000	0.219	0.673	0.148	ILSCO, C-1-10, 1 AWG, 2 FLEX, DIE 37, UL, CSA
CLWS-1-14	2.580	0.000	0.281	0.673	0.180	ILSCO, C-1-14, 1 AWG, 2 FLEX, DIE 37, UL, CSA
CLWS-1-516	2.580	0.000	0.343	0.673	0.180	ILSCO, CLWS-1-516, 1 AWG, 2 FLEX, DIE 37, UL, CSA
CLWS-1-38	2.580	0.000	0.406	0.673	0.211	ILSCO, CLWS-1-38, 1 AWG, 2 FLEX, UL, CSA
CLWS-1-12	2.955	0.000	0.562	.739	0.265	ILSCO, CLWS-1-12, 1 AWG, 2 FLEX, DIE 37, UL, CSA

THE INFORMATION CONTAINED WITHIN THIS DOCUMENT IS PROPRIETARY TO ILSCO AND MAY NOT BE DISCLOSED WITHOUT PRIOR WRITTEN CONSENT