



1530

**43 Pocket - Electrical & Maintenance Tool Carrier**

- › 7" x 5½" Multi-compartment plastic tray included.
- › 2 Window pockets for easy view of pocket contents, one removable and one stationary.
- › Box-shaped design prevents tipping over.
- › Pockets for drill bits and tips, cell phone, electrical tester, electrical tape strap, etc.
- › 23"L x 12"W x 15"H



1141

**36 Pocket - Double Traytote™ Bag**

- › 36 Multi-use pockets outside.
- › Two 11" x 6" multi-compartment plastic trays included, slides securely into bottom of bag.
- › Pockets for cordless drill, cell phone, 2-way radio, etc.
- › Padded carrying handles and adjustable shoulder strap.
- › 23"L x 9"W x 12"H



1535

**37 Pocket - 18" Tote Bag with Top-Side Plastic Tray**

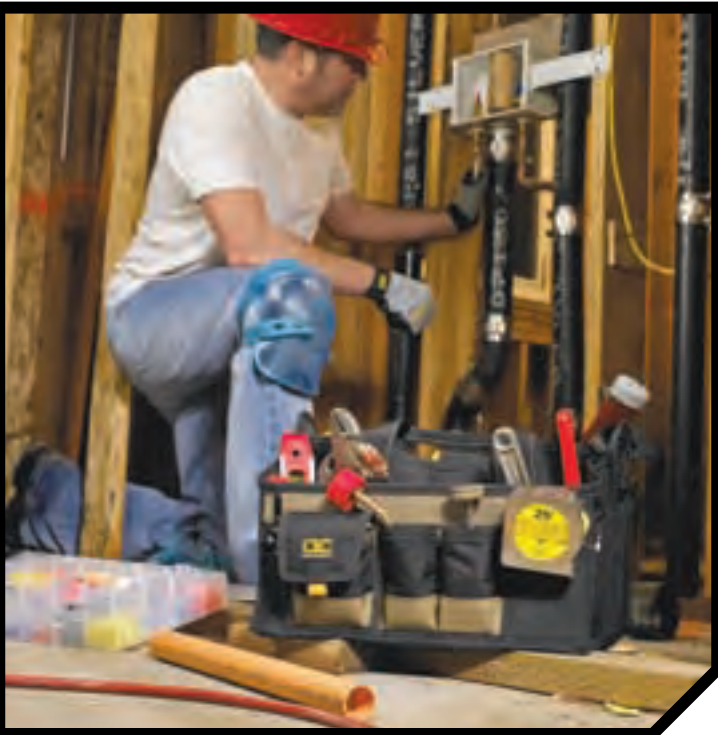
- › 13 Pockets inside and 24 pockets outside to organize tools and accessories.
- › Padded web carrying handles and adjustable shoulder strap.
- › 13½" x 3" Multi-compartment plastic tray to organize small parts on top for easy access.
- › Large zippered outside pocket and heavy-duty tape clip.
- › 18"L x 11"W x 11"H



1534

**23 Pocket - 16" Tote Bag with Top-Side Plastic Tray**

- › 10 Pockets inside and 13 pockets outside to organize tools and accessories.
- › Padded web carrying handles and adjustable shoulder strap.
- › 10" x 3" Multi-compartment plastic tray to organize small parts, recessed in top for easy access.
- › 16"L x 8"W x 11"H



1533

**16 Pocket - 12" Tote Bag with Top-Side Plastic Tray**

- › 3 Pockets inside and 13 pockets outside to organize tools and accessories.
- › Padded web carrying handles.
- › Abrasion resistant rubber feet.
- › 8" x 3" Multi-compartment plastic tray to organize small parts, recessed in top for easy access.
- › 12"L x 8"W x 9"H