



**Slimline and High Output Channels** are ideal for maximum illumination. Available in 4', 6', and 8' individual lengths as well as continuous row mounting.

**Housing**

High-gloss, baked white enamel finish on steel housing with removable wireway access panel. Fixture is shipped fully wired and assembled. CHX models have patented (#4,422,132) flip-up socket bar and turn fastener for attaching wireway cover.

**Electrical**

Fully wired for 120V, 60Hz operation with thermally protected, automatic resetting, Class P, high-power-factor ballast, unless otherwise specified. Sound rated A electronic ballast, except slimline and high-output models. UL listed, damp location.

- Patented, flip-up sockets save installation time.
- Fully wired and assembled.
- Combination end plate/joiner easily connect units for continuous row or wire through.
- Die-formed heavy gauge, steel housing.
- Surface or pendant mount; individual, tandem or continuous rows.
- U.L. listed, damp location.

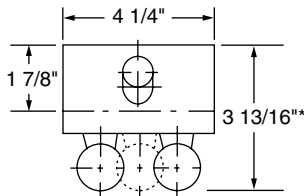
**Mounting**

Combination end plate/joiner connects units for continuous row or wire through. Surface or pendant mount, high output model must be suspended at least 6" from ceiling for cooler operation.



Flip up sockets

**Dimensions**



\*HO and VHO are 4 5/8" deep

**CHX Slimline And High Output Channel Ordering Information**

Series	# Lamps	Lamps	Ballast	Voltage
<b>CHX</b>	<b>1</b> <b>2</b>	<b>48 = 48"</b> <b>72 = 72"</b> <b>96 = 96"</b>	<b>B5 = Electronic T12</b> <b>HOB5 = High Output Electronic T12</b> <b>B11 = Electronic T8</b> <b>HOB11 = High Output Electronic T8</b> <b>HO = High Output</b>	<b>UNV = 120-277V</b> <b>120 = 120V</b> <b>277 = 277V</b>