

Carlton® Round Floor Box Systems – three-way versatility for power, data and communications.

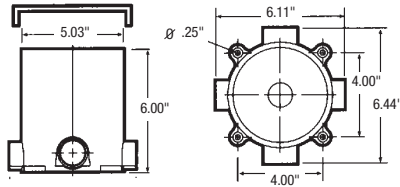
Carlton round floor boxes give you the same cost-saving advantages over metal boxes as our rectangular boxes. By letting you combine power, data and communications in the same box, you can dramatically reduce your installation time and cost compared to other non-metallic boxes.

In addition, multi-use covers mean fewer SKUs to deal with and greater jobsite flexibility to increase your savings further. Take a closer look at all their advantages for yourself.

Features

- Non-metallic PVC construction, watertight gasket and corrosion-resistant hardware assure long life and reliable performance even in harsh and/or corrosive environments.
- Covers are available for a variety of applications.
- The same box depth simplifies ordering and reduces inventory.
- For tile and carpet applications.
- Cover options include: Brass, Stainless Steel, and Non-metallic (Ivory, Caramel, Taupe, Slate and Brown).
- Concrete tight and suitable for any on grade/below grade application; concrete or wood floor construction approved.
- Y-connector (E972Y) allows you to feed parallel runs of 3/4" conduit or to feed in/out from the same side for increased wiring flexibility and faster installation.
- PVC molded hubs and reducer plugs included.
- Accepts 1/2", 3/4" and 1" conduit tubing or raceway.
- UL scrub water tested, approved for all types of finish flooring.

Specifications



Carlton Round Floor Boxes allow for various thickness of concrete pours. Trim out is easy – just use a handsaw to cut off box at desired height to accommodate carpet, tile, or other flooring. Carlton leveling ring guarantees a level top every time, even if the box is tipped slightly during the pouring process.

Cat. No.	Internal Volume (cu. in.)	Min. Concrete Depth (in.)	Hubs	Reducer Plugs	Std Ctn Qty	Std Ctn Wt. lb
E971FB	90.0 (15.5 per inch of depth)	3-1/2	(2) 1" and (2) 3/4"	(2) 1" x 3/4" and (2) 3/4" x 1/2"	10	15.6

Accessories

Multi-Service Divider Kit



Multi-service divider kit for separate power, data and communications compartments provides unbeatable flexibility and money-saving installation speed. For use with non-metallic boxes only.

Cat. No.	Std Ctn Qty	Std Ctn Wt. lb
E973K	10	3

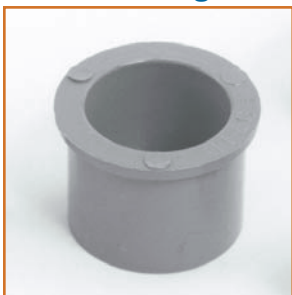
3/4" Y Fitting



The 3/4" Y Fitting provides for in and out service from a single 1" port and allows for two 3/4" parallel conduit runs to adapt into a single conduit body port.

Cat. No.	Std Ctn Qty	Std Ctn Wt. lb
E972Y	10	2.1

Reducer Plugs



Cat. No.	Size (in.)	Std Ctn Qty	Std Ctn Wt. lb
E971C	3/4 x 1/2	100	2.1
E971D	1 x 3/4	100	3.2