

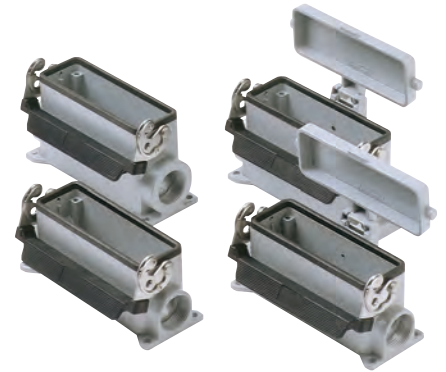
CH - CA and MH - MA C-TYPE standard version

inserts		page:
CD	64 poles + ⊕	72
CDD	108 poles + ⊕	81
CDS	42 poles + ⊕	-
CDSH	42 poles + ⊕	89
CNE	24 poles + ⊕	113
CSE	24 poles + ⊕	-
CSH	24 poles + ⊕	113
CSH S	24 poles + ⊕	125
CCE	24 poles + ⊕	133
CMSH	10+2 (aux) poles + ⊕	140
CMCE	10+2 (aux) poles + ⊕	141
CSS	24 poles + ⊕	151
CQE	46 poles + ⊕	171
CQEE	64 poles + ⊕	177
CX	4/8 and 6/6 poles + ⊕	204 and 206
MIXO	6 modules	262 - 317

surface mounting housings with 2 levers or 4 pegs



surface mounting housings with single lever



description	part No.	entry Pg	part No	entry M	part No.	entry Pg	part No.	entry M
with lever/s	CHP 24	21	MHP 24.25	25	CHP 24 L	21	MHP 24 L25	25
with lever/s	CHP 24.2	21 x 2	MHP 24.225	25 x 2	CHP 24 L2	21 x 2	MHP 24 L225	25 x 2
with levers, high construction 1)			MAP 24.25	25				
with levers, high construction 1)			MAP 24.225	25 x 2				
with lever/s, high construction	CAP 24.21	21	MAP 24.32	32	CAP 24 L	21	MAP 24 L32	32
with lever/s, high construction	CAP 24.221	21 x 2	MAP 24.232	32 x 2	CAP 24 L2	21 x 2	MAP 24 L232	32 x 2
with lever/s, high construction	CAP 24.29	29	MAP 24.40	40	CAP 24 L29	29	MAP 24 L40	40
with lever/s, high construction	CAP 24.229	29 x 2	MAP 24.240	40 x 2	CAP 24 L229	29 x 2	MAP 24 L240	40 x 2
with pegs and aluminum cover 2)	CHP 24 CS	21	MHP 24 CS25	25				
with pegs and aluminum cover 2)	CHP 24 CS2	21 x 2	MHP 24 CS225	25 x 2				
with pegs and aluminum cover, high construction 2)	CAP 24 CS	21	MAP 24 CS32	32				
with pegs and aluminum cover, high construction 2)	CAP 24 CS2	21 x 2	MAP 24 CS232	32 x 2				
with pegs and aluminum cover, high construction 2)	CAP 24 CS29	29	MAP 24 CS40	40				
with pegs and aluminum cover, high construction 2)	CAP 24 CS229	29 x 2	MAP 24 CS240	40 x 2				
with pegs and plastic cover 2)	CHP 24 CP	21	MHP 24 CP25	25				
with pegs and plastic cover 2)	CHP 24 CP2	21 x 2	MHP 24 CP225	25 x 2				
with pegs and plastic cover, high construction 2)	CAP 24 CP	21	MAP 24 CP32	32				
with pegs and plastic cover, high construction 2)	CAP 24 CP2	21 x 2	MAP 24 CP232	32 x 2				
with pegs and plastic cover, high construction 2)	CAP 24 CP29	29	MAP 24 CP40	40				
with pegs and plastic cover, high construction 2)	CAP 24 CP229	29 x 2	MAP 24 CP240	40 x 2				
with lever and aluminium cover	CHP 24 LS	21	MHP 24 LS25	25				
with lever and aluminium cover	CHP 24 LS2	21 x 2	MHP 24 LS225	25 x 2				
with lever and aluminium cover, high construction	CAP 24 LS	21	MAP 24 LS32	32				
with lever and aluminium cover, high construction	CAP 24 LS2	21 x 2	MAP 24 LS232	32 x 2				
with lever and aluminium cover, high construction	CAP 24 LS29	29	MAP 24 LS40	40				
with lever and aluminium cover, high construction	CAP 24 LS229	29 x 2	MAP 24 LS240	40 x 2				

1) can only be used with a complete cable gland (to be purchased separately)

2) may be combined with enclosures:
 - CHO/CAO 24 X and CHV/CAV 24 X
 - MHO/MAO 24 X and MHV/MAV 24 X

IMPORTANT NOTE: The enclosures ensure IP66/IP69 degree of protection (or IP65 for hinged cover versions) when mated and locked with the closing levers. The cover (CS, CP) only ensures mechanical protection, but does not ensure IP65 degree of protection.

CR CLK
locking device for CLASS locking levers (page 666)



CALUS Type 4/4X/12
(except enclosures with plastic cover)

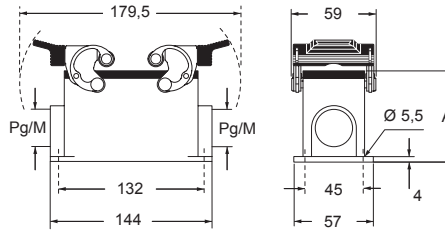


insulating cable gland or fittings without gasket

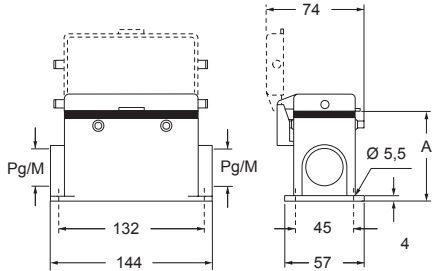


cable gland with O-Ring gasket

CHP - CAP and MHP - MAP ▲

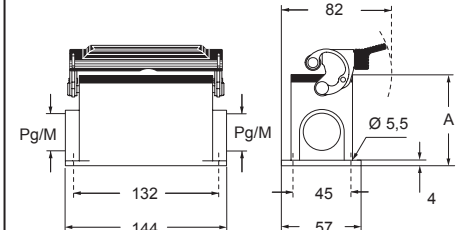


CHP CS/CP - CAP CS/CP and MHP CS/CP - MAP CS/CP ●

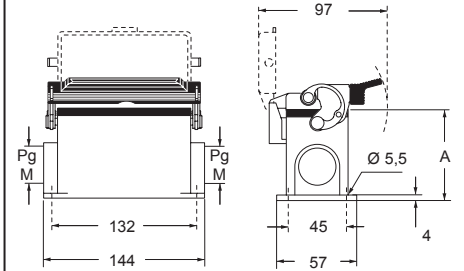


type	A
CHP / MHP	63
CAP / MAP	81
CHP CS / MHP CS	63
CAP CS / MAP CS	81
CHP CP / MHP CP	63
CAP CP / MAP CP	81

CHP L - CAP L and MHP L - MAP L ▲



CHP LS - CAP LS and MHP LS - MAP LS ●



type	A
CHP L / MHP L	63
CAP L / MAP L	81
CHP LS / MHP LS	63
CAP LS / MAP LS	81