

Fusetron®

Dual-Element, Time-Delay Fuses

Class RK5 – 250 Volt

FRN-R
70-600A



Catalog Symbol: FRN-R †

Current-Limiting

Dual-element, time-delay – 10 seconds (minimum) at 500% rated current

Amp Rating: 70 to 600A

Voltage Rating:

- 250Vac (or less)
- 125Vdc (110-200A)
- 250Vdc (225-600A)

Interrupting Rating:

- 200,000A RMS Sym.
- 20,000A dc

Agency Information:

CE, UL Listed, Std. 248-12, Class RK5, Guide JDDZ, File E4273
CSA Certified, C22.2 No. 248.12, Class 1422-01, File 53787

Catalog Numbers - Amp Rating

FRN-R-70	FRN-R-125	FRN-R-350
FRN-R-75	FRN-R-150	FRN-R-400
FRN-R-80	FRN-R-175	FRN-R-450
FRN-R-85	FRN-R-200	FRN-R-500
FRN-R-90	FRN-R-225	FRN-R-600
FRN-R-100	FRN-R-250	—
FRN-R-110	FRN-R-300	—

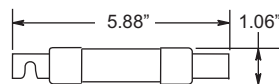
Carton Quantity and Weight

Amp Ratings	Carton Qty.	Weight*	
		Lbs.	Kg.
70-100	5	1.5	0.680
101-200	1	0.77	0.349
201-400	1	1.52	0.689
401-600	1	3.0	1.4

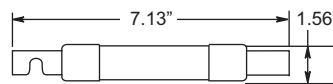
*Weight per carton.

† To obtain information for 0-60A, access Data Sheet: 1019 or 1169 (8-60A with indication)

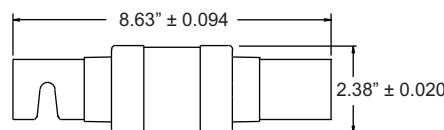
Dimensions - in



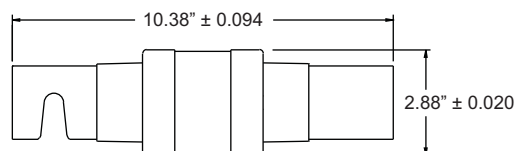
70 to 100A



110 to 200A



225 to 400A



450 to 600A

General Information:

- Provides motor overload, ground fault and short-circuit protection.
- Helps protect motors against burnout from overloads and single-phasing when sized properly.
- Simplifies and improves blackout prevention (selective coordination).
- Dual-element fuses can be applied in circuits subject to temporary motor overloads and surge currents to provide both high performance short-circuit and overload protection.
- The overload element provides protection against low level overcurrent of overloads and will hold on inrush current which is five times greater than the amp rating of the fuse for a minimum of ten seconds.

Fuse Reducers For Class R Fuses

Equipment Fuse Clips	Desired Fuse (Case) Size	Catalog Number (Pairs) 250V
200A	100A	No. 2621-R
	100A	No. 2641-R
400A	200A	No. 242-R
	100A	No. 2661-R
600A	200A	No. 2662-R
	400A	No. 2664-R*

*Single reducer only (pair not required).

Class RK5 Fuse Blocks (250V) Catalog Data

(Clip Retaining Spring Standard, Suffix "R")

Terminal Type (Suffix No.)

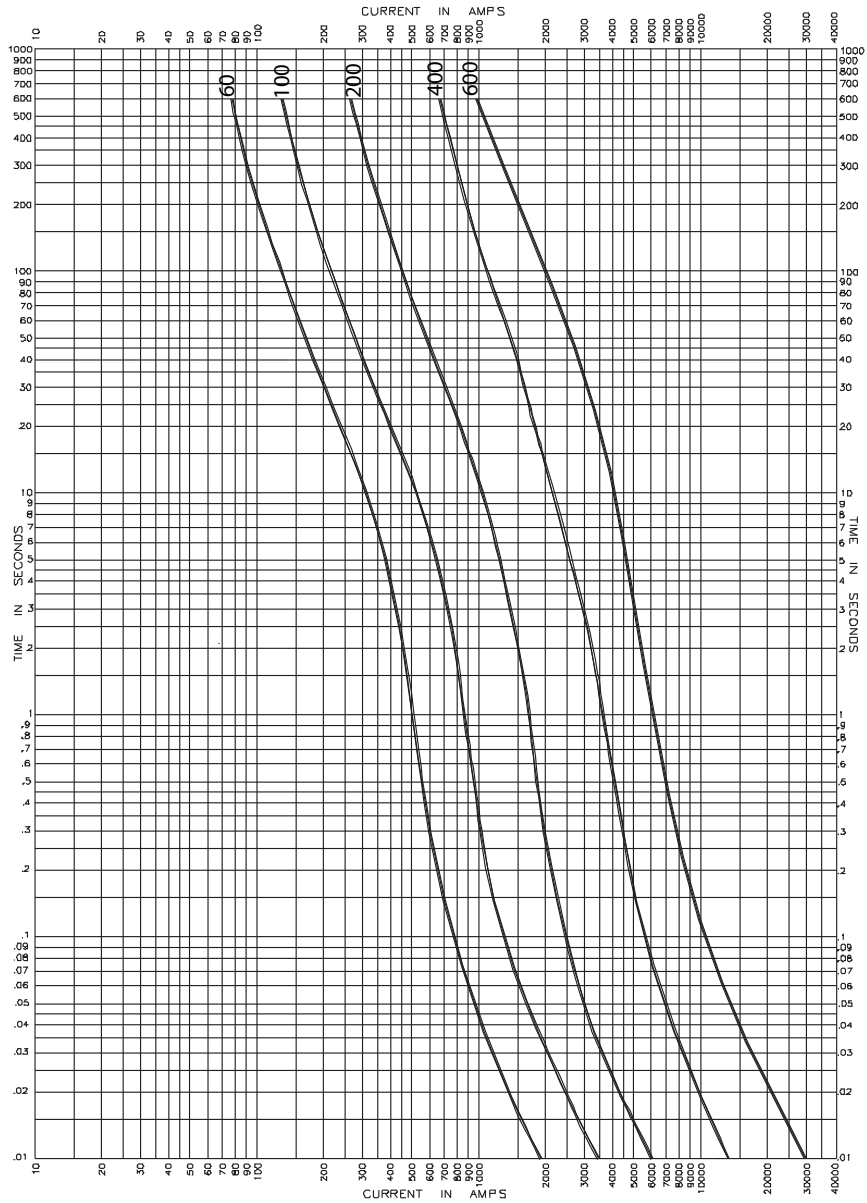
Basic Box Lug w/

— Reinforced Clip

Amps	Poles	Catalog Number	—	Reinforced Clip
				CU only
70	1	R25100-1	CR	COR
to	2	R25100-2	CR	COR
100	3	R25100-3	CR	COR
<hr/>				
110 to 200	1	R25200-1	CR	—
	3	R25200-3	CR	—
<hr/>				
225 to 400	1	R25400-1	CR	—
	3	R25400-3	CR	—
<hr/>				
450 to 600	1	R25600-1	CR	—
	3	R25600-3	CR	—



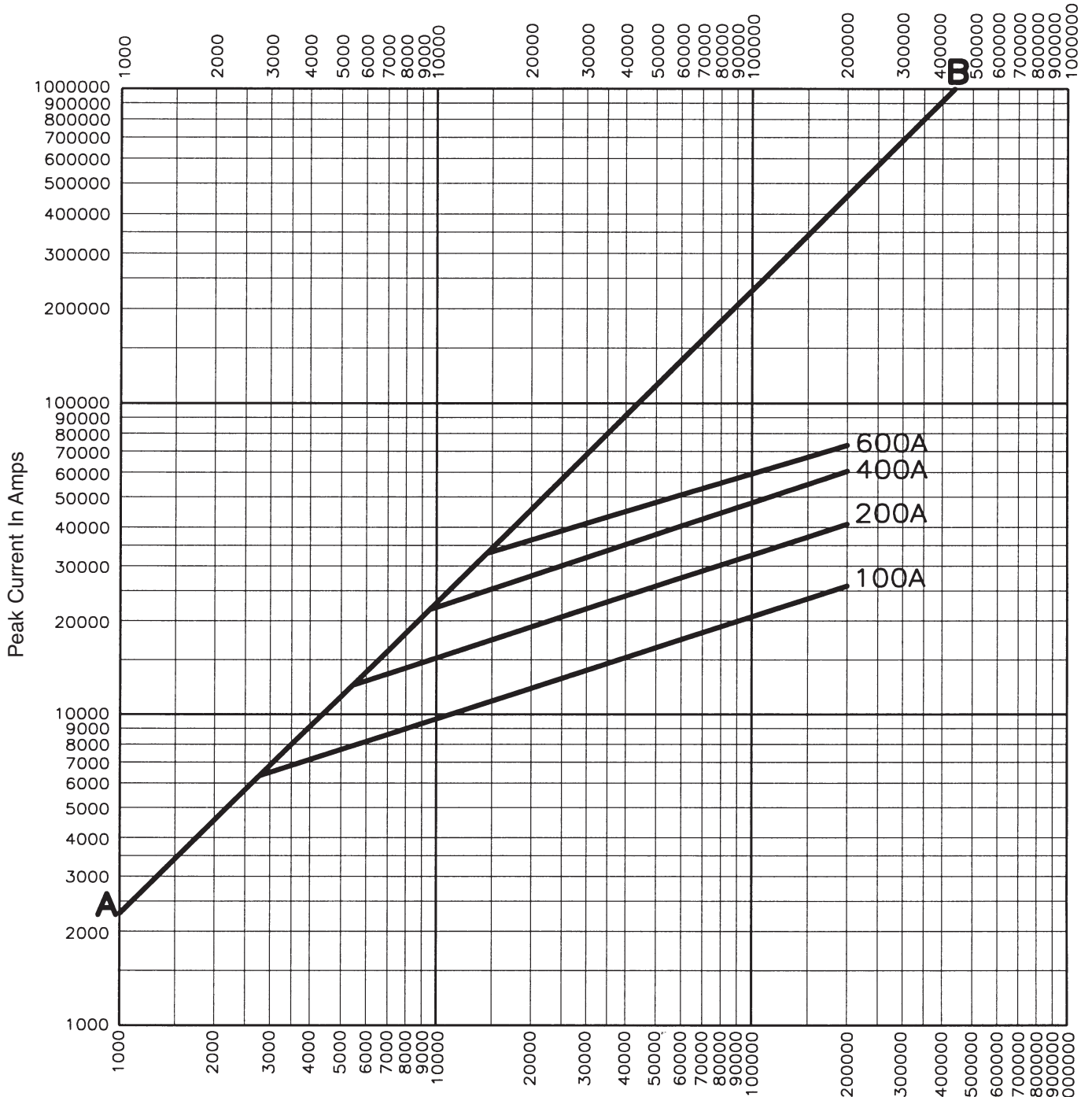
Time-Current Characteristic Curves—Average Melt



Form 250 Rev. A

Note: 60 amp fuse is ferrule style. Curve is shown for relative performance only.

Current-Limitation Curves



RMS Symmetrical Currents In Amps
 A-B=Asymmetrical Available Peak (2.3 x Symm RMS Amps)

The only controlled copy of this Data Sheet is the electronic read-only version located on the Cooper Bussmann Network Drive. All other copies of this document are by definition uncontrolled. This bulletin is intended to clearly present comprehensive product data and provide technical information that will help the end user with design applications. Cooper Bussmann reserves the right, without notice, to change design or construction of any products and to discontinue or limit distribution of any products. Cooper Bussmann also reserves the right to change or update, without notice, any technical information contained in this bulletin. Once a product has been selected, it should be tested by the user in all possible applications.