

Compression Connections

BURNDY® Products

Copper Compression — Code — Long Barrel — No Inspection Window

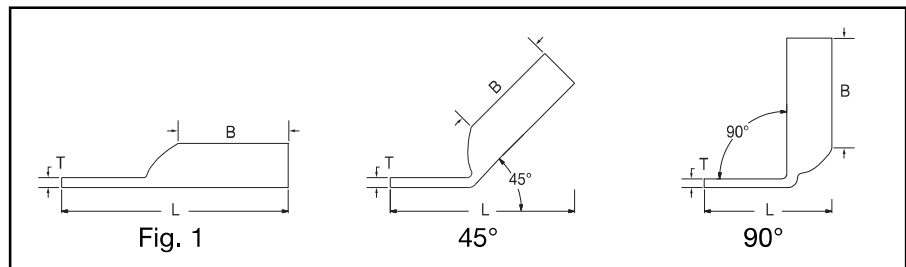
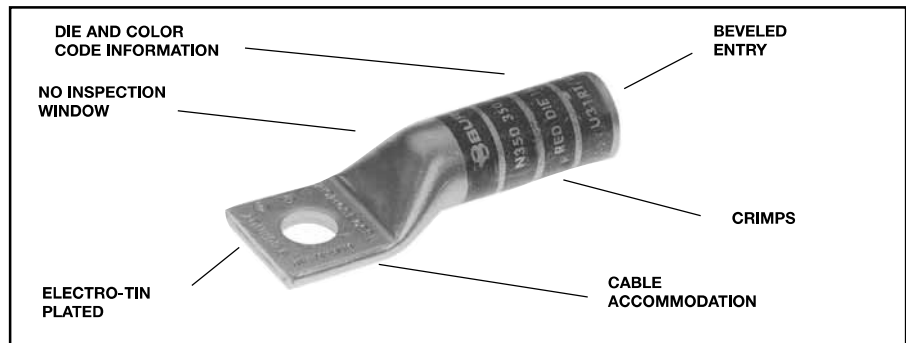
ONE HOLE HYLUG™ CODE CONDUCTOR LONG BARREL

TYPES YA, YA-TC

UNINSULATED COPPER COMPRESSION TERMINAL

UL Listed 90° C,
600 Volts to 35 kV ◆

45° and 90° angles are available.
Please contact Customer Service to order:
1-800-346-4175



Catalog Number	Fig #	Conductor		Stud Hole Size	Tongue Width	Figure Dimensions			▲ Installation Tooling					Wire Strip Length	
		AWG	MM ²			(B)	(T)	(L)	Dieless (# of crimps)	Mechanical	Hydraulic		Color Code		Die Index
										MD6, OUR840, MD7-34R	BCT500HS, Y500CHS	Y35, Y39, Y750 Y46*, PAT750			
YA8CTC10	1	#8 AWG	—	# 10	.38"	.81"	.08"	1.57"	MRC840 (2) Y8MBR-1 (1)	W8CVT (2) W8CRT (2) X8CRT (2)	X8CRT (2) W8CVT (2) W8CRT (2)	U8CRT (2)	Red	49	1"
YA8CTC14	1	#8 Weld 37/24	† 10	1/4"	.41"	.81"	.08"	1.69"	Y1MRTC (2) Y81KFT (1)						
YA8CTC38	1	#6 Sol	—	3/8"	.58"	.81"	.06"	1.88"	Y81KFTMBH (1) PAT81KFT-18V (1)						
YA6CTC10	1	#6 AWG	—	# 10	.41"	1.12"	.09"	1.89"	MRC840 (2) MY29-3 (2)	W5CVT (2) W5CRT (2) X5CRT (2)	W5CVT (2) W5CRT (2) X5CRT (2)	U5CRT (2) U8CABT (2)	Blue	7	1-3/16"
YA6CN	1			1/2"	.83"	1.12"	.12"	2.64"	Y644HS (1) Y1MRTC (2)						
YA6C	1			1/4"	.41"	1.12"	.09"	1.81"	Y81KFT (1) Y81KFTMBH (1) PAT81KFT-18V (1)						
YA5C	1	#5 AWG	—	1/4"	.44"	1.12"	.07"	1.98"	Y1MRTC (2) MRC840 (2)	W5CVT (2) W5CRT (2) X5CRT (2)	W5CVT (2) W5CRT (2) X5CRT (2)	U5CRT (2)	Blue	7	1-3/16"
YA5CN	1			1/2"	.83"	1.12"	.12"	2.67"	MY29-3 (2) MY29-11 (2)						
									Y644HS (1) Y81KFT (1) Y81KFTMBH (1) PAT81KFT-18V (1)						
YA4CTC10	1	#4 AWG	—	# 10	.49"	1.12"	.09"	1.94"	MRC840 (2) MY29-3 (2)	W4CVT (2) W4CRT (2) X4CRT (2)	W4CVT (2) W4CRT (2) X4CRT (2)	U4CRT (2) U6CABT (2)	Gray	8	1-3/16"
YA4C	1			1/4"	.50"	1.12"	.09"	1.87"	MY29-11 (2) Y644HS (1) Y81KFT (1) Y81KFTMBH (1) PAT81KFT-18V (1)						

* Use PUADP-1 adapter with "U" dies in Y46 HYPRESS™.
** P-RT die sets for use in Y46 HYPRESS™ only, PUADP-1 adapter not required.
*** The MM² conductor sizes listed are the recommendations for Class 2 conductor.

† The MM² conductor size listed is for Class 2 and Class 5 conductor.
▲ See tooling section of this catalog for complete tool and die listings. Use ONLY color coded die recommendations for "-FX" connectors. For nest/indenter system contact factory.

• Available undrilled. Add suffix "U" to catalog number (example: YA25U).
◆ For applications greater than 2000 Volts consult cable manufacturer for voltage stress relief instructions.
Note: All dimensions shown are for reference only.

Throughout the catalog you will notice blue highlighted items. These are the most frequently ordered BURNDY® Products.