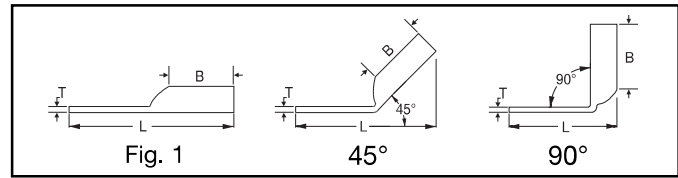
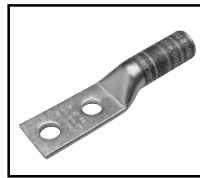


**TWO HOLE HYLUG™
CODE CONDUCTOR
LONG BARREL**

(Continued)

UL Listed 90° C,
600 Volts to 35 kV ◆



C-33

45° and 90° angles are available.
Please contact Customer Service to order:
1-800-346-4175



Catalog Number	Fig #	Conductor		Stud Hole Size	Stud Hole Spacing	Tongue Width	Figure Dimensions			▲ Installation Tooling							
		AWG	MM²				(B)	(T)	(L)	Dieless (# of crimps)	Mechanical		Hydraulic		Color Code	Die Index	Wire Strip Length
											MD6, OUR840, MD7-34R	BCT500HS, Y500CTHS	Y35, Y39, Y750, Y46*, PAT750				
YA2C2N	1	#2 AWG	35	1/2"	1-3/4"	.81"	1.25"	.12"	4.64"	Y1MRTC (4) MY29-3 (2) MY29-11 (2) MRC840 (2) Y644HS (1) Y81KFT (2) Y81KFTMBH (2) PAT81KFT-18V (2)	W2CVT (2) W2CRT (2) X2CRT (2)	W2CVT (2) W2CRT (2) X2CRT (2)	U2CRT (2)	Brown	10	1-5/16"	
YA2C2TC14	1			1/4"	5/8"	.60"	1.25"	.11"	2.86"								
YA2C2TC14E2	1			1/4"	3/4"	.60"	1.25"	.11"	2.98"								
YA2C2TC38E2	1			3/8"	3/4"	.60"	1.25"	.11"	3.17"								
YA2C2TC516E2	1			5/16"	3/4"	.60"	1.25"	.11"	3.05"								
YA2C2NTC38	1			3/8"	1-3/4"	.60"	1.25"	.11"	4.17"								
YA2C2TC38	1			3/8"	1"	.60"	1.25"	.11"	3.42"								
YA2C2TC38E6	1			3/8"	7/8"	.60"	1.25"	.11"	3.30"								
YA2C2TC516E2	1			5/16"	3/4"	.60"	1.25"	.11"	3.05"								
YA1C2N	1	#1 AWG	50	1/2"	1-3/4"	.81"	1.38"	.12"	4.82"	Y1MRTC (4) MY29-3 (2) MY29-11 (2) MRC840 (2) Y644HS (1) Y81KFT (2) Y81KFTMBH (2) PAT81KFT-18V (2)	W1CVT (2) W1CRT-1 (2) X1CRT-1 (2)	W1CVT (2) W1CRT-1 (2) X1CRT-1 (2)	U1CRT-1 (2) U4CABT (2)	Green	11	1-1/2"	
YA1C2TC14	1			1/4"	5/8"	.68"	1.38"	.10"	3.03"								
YA1C2TC14E2	1			1/4"	3/4"	.75"	1.38"	.10"	3.15"								
YA1C2TC38	1			3/8"	1"	.68"	1.38"	.10"	3.59"								
YA252N	1	1/0 AWG	—	1/2"	1-3/4"	.81"	1.38"	.11"	4.81"	MY29-3 (2) MY29-11 (2) MRC840 (4) Y644HS (1) Y81KFT (2) Y81KFTMBH (2) PAT81KFT-18V (2)	W25VT (4) W25RT (4) X25RT (4)	W25VT (4) W25RT (4) X25RT (4)	U25RT (2) U2CABT (2)	Pink	12	1-7/16"	
YA252TC14	1			1/4"	5/8"	.75"	1.38"	.12"	3.05"								
YA252TC14E2	1			1/4"	3/4"	.75"	1.38"	.12"	3.18"								
YA252TC38	1			3/8"	1"	.75"	1.38"	.12"	3.62"								
YA252TC516	1			5/16"	1"	.75"	1.38"	.12"	3.49"								
YA252NTC38	1			3/8"	1-3/4"	.75"	1.38"	.12"	4.37"								
YA262N	1	2/0 AWG	70	1/2"	1-3/4"	.83"	1.50"	.12"	4.97"	Y81KFTMBH (2) PAT81KFT-18V (2)	W26VT (4) W26RT (4) X26RT (4)	W26VT (4) W26RT (4) X26RT (4)	U26RT (2)	Black	13	1-9/16"	
YA262TC14	1			1/4"	5/8"	.83"	1.50"	.12"	3.22"								
YA262TC14E2	1			1/4"	3/4"	.83"	1.50"	.12"	3.34"								
YA262TC38	1			3/8"	1"	.83"	1.50"	.12"	3.78"								
YA272N	1	3/0 AWG	—	1/2"	1-3/4"	.91"	1.50"	.13"	5.01"	Y81KFTMBH (2) PAT81KFT-18V (2)	W27VT (4) W27RT (4) X27RT (6)	W27VT (4) W27RT (4) X27RT (6)	U27RT (2)	Orange	14	1-9/16"	
YA272TC14E2	1			1/4"	3/4"	.91"	1.50"	.12"	3.38"								
YA272TC38	1			3/8"	1"	.90"	1.50"	.12"	3.82"								
YA282N	1	4/0 AWG	—	1/2"	1-3/4"	1.02"	1.62"	.14"	5.17"	MY29-3 (2) MY29-11 (2) Y644HS (1) Y81KFT (2) Y81KFTMBH (2) PAT81KFT-18V (2)	W28VT (4) W28RT (4) X28RT (6)	W28VT (4) W28RT (4) X28RT (6)	U28RT (2)	Purple	15	1-11/16"	
YA282TC38	1			3/8"	1"	1.02"	1.62"	.14"	3.99"								
YA282TC14E2	1			1/4"	3/4"	1.02"	1.62"	.14"	3.55"								
YA282NTC38	1			3/8"	1-3/4"	1.02"	1.62"	.14"	4.74"								
YA292N	1	250 kcmil	—	1/2"	1-3/4"	1.11"	1.62"	.16"	5.21"	MY29-3 (2) MY29-11 (2) Y644HS (1) Y81KFT (2) Y81KFTMBH (2) PAT81KFT-18V (2)	W29VT (4) X29RT (8)	W29VT (4) W29RT (4) X29RT (8)	U29RT (2)	Yellow	16	1-11/16"	
YA292TC38	1			3/8"	1"	1.10"	1.62"	.16"	4.02"								

▲ See tooling section of this catalog for complete tool and die listings.
* Use PUADP-1 adaptor with "U" -dies in Y46 HYPRESS™.

** P-RT die sets for use in Y46 HYPRESS™ only, PUADP-1 adaptor not required.
*** The MM² conductor sizes listed are the recommendations for Class 2 conductor.

" Available undrilled. Add suffix "U" to catalog number (example: YA25U).
◆ For applications greater than 2000 Volts consult cable manufacturer for voltage stress relief instructions.
Note: All dimensions shown are for reference only.

Throughout the catalog you will notice blue highlighted items. These are the most frequently ordered BURNDY® Products.