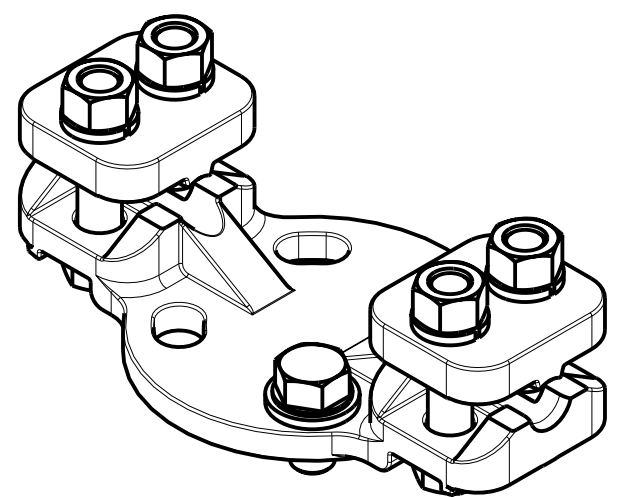


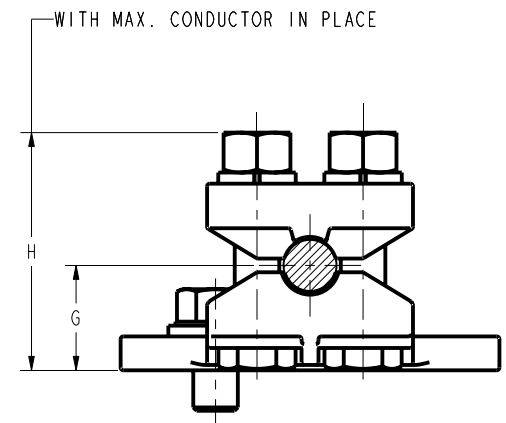
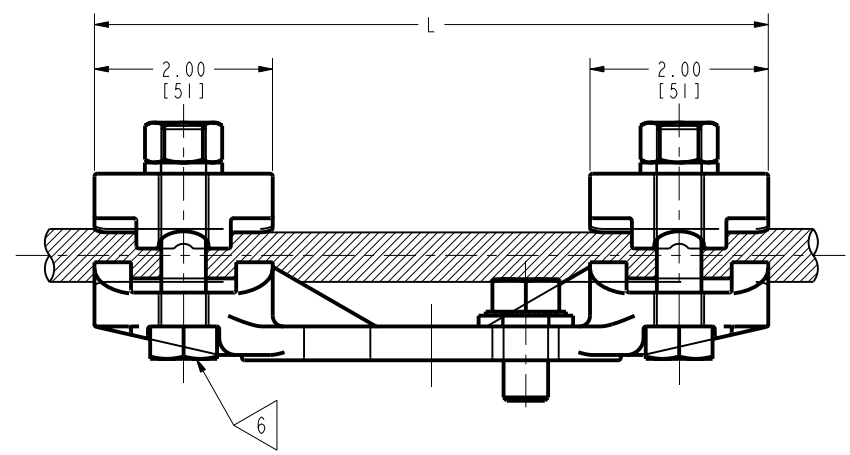
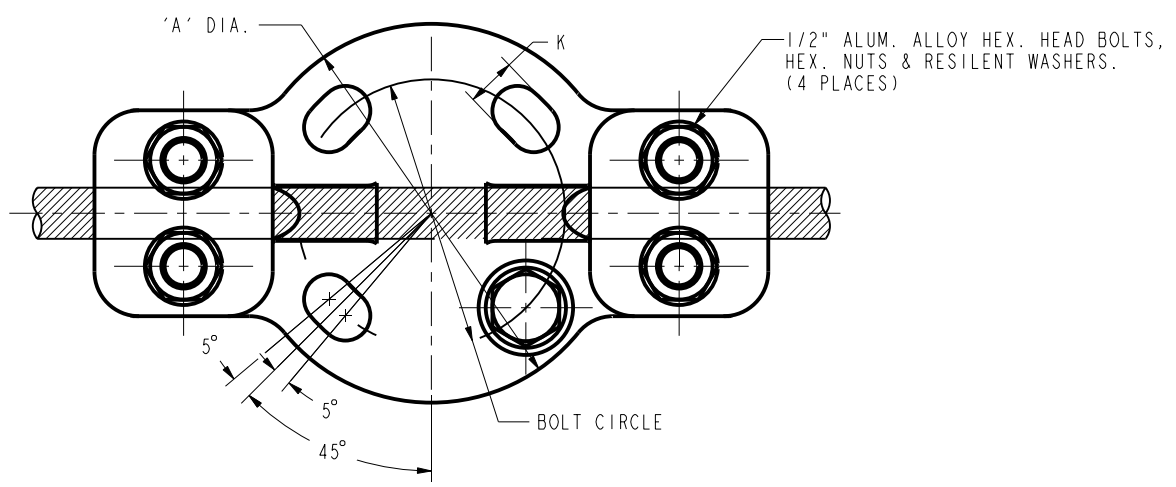
CAT. #	CONDUCTORS			BOLT CIRCLE	'A' DIA.	G	H	K	L	REF. DWG.
	ALUM. CABLE	A.C.S.R	ALUM. TUBE							
UHKR11A3	#4 SOL. (.204)- 4/0 STR. (.528)	#6 (6-1 STR.) (.198)- 4/0 (6-1 STR.) (.563)	1/4" IPS (.540)	3.00 [76]	4.25 [108]	1.16 [29]	2.63 [67]	.56 [14]	7.56 [192]	FD038522
UHKR11A5				5.00 [127]	6.25 [159]			.69 [18]	8.50 [216]	--
UHKR13A3	250 Kcmil (.575)- 550 Kcmil (.855)	266.8 Kcmil (6-7 STR.) (.633)- 477 Kcmil (30-7 STR.) (.883)	3/8" IPS (.675) 1/2" IPS (.845)	3.00 [76]	4.25 [108]	1.32 [34]	2.88 [73]	.56 [14]	7.56 [192]	FD036786
UHKR13A5				5.00 [127]	6.25 [159]			.69 [18]	8.88 [226]	FD036702
UHKR14A3	600 Kcmil (.893)- 1113 Kcmil (1.216)	556.5 Kcmil (26-7 STR.) (.927)- 1033.5 Kcmil (54-7 STR.) (1.246)	3/4" IPS (1.050)	3.00 [76]	4.25 [108]	1.72 [44]	3.56 [90]	.56 [14]	7.56 [192]	--
UHKR14A5				5.00 [127]	6.25 [159]			.69 [18]	9.06 [230]	FD036700
UHKR14A7				7.00 [178]	8.50 [216]	1.53 [39]	3.38 [86]	.81 [21]	11.56 [294]	--
UHKR16A3	1000 Kcmil (1.152)- 2000 Kcmil (1.632)	1113 Kcmil (54-19 STR.) (1.293)- 1780 Kcmil (54-19 STR.) (1.602)	1" IPS (1.315)	3.00 [76]	4.25 [108]	1.97 [50]	4.06 [103]	.56 [14]	7.56 [192]	LD081930
UHKR16A5			1 1/4" IPS (1.660)	5.00 [127]	6.25 [159]			1.80 [46]	3.88 [99]	.69 [18]
UHKR17A3	2000 Kcmil (1.632)- 2500 Kcmil (1.824)	1780 Kcmil (84-19 STR.) (1.602)- 2156 Kcmil (84-19 STR.) (1.762)	1 1/4" IPS (1.660)	3.00 [76]	4.25 [108]	2.50 [64]	4.62 [117]	.56 [14]	8.02 [204]	LD067004
UHKR17A5			1 1/2" IPS (1.990)	5.00 [127]	6.25 [159]			.69 [18]	9.31 [236]	LD064954
UHKR17A7			7.00 [178]	8.50 [216]			.81 [21]	10.62 [270]	LD064959	



ISOMETRIC VIEW

NOTES:

- MATERIAL: CAST ALUMINUM ALLOY.
- DIMENSIONS IN BRACKETS [] DENOTES METRIC UNITS [SI UNITS] AND ARE ROUNDED TO THE NEAREST WHOLE NUMBER. UNLESS OTHERWISE SPECIFIED THESE UNITS SHALL BE USED FOR REFERENCE ONLY.
- INSTALLATION METHOD:
ALL CONTACT SURFACES OF THE CONNECTORS SHALL BE AGGRESSIVELY BRUSHED, A MINIMUM OF 2 BRUSHINGS ON EACH SURFACE, USING A STAINLESS STEEL WIRE BRUSH FILLED WITH PENETROX^R A13. REMOVE GREASE FROM SURFACE USING A CLEAN AND DRY CLOTH (NO SOLVENTS). IMMEDIATELY APPLY A THIN LAYER OF PENETROX^R A13 ON ALL CONTACT SURFACES BEFORE ASSEMBLY.
- MOUNTING HARDWARE:
3.00" BOLT CIRCLE BASE:
CAP MOUNTING: (4) 1/2"-13X1" LONG GALVANIZED STEEL HEX. HEAD BOLTS, S.A.E. FLAT WASHERS & SHP. LW. IF BASE IS DESIRED ADD "B" TO THE END OF THE CATLOG NO. AND THE FOLLOWING HARDWARE WILL BE SUPPLIED.
BASE MOUNTING: (4) 1/2"-13X1" LONG GALVANIZED STEEL HEX. HEAD BOLTS, S.A.E. FLAT WASHERS & SHP. LW.
5.00" BOLT CIRCLE BASE:
CAP MOUNTING: (4) 5/8"-11X1" LONG GALVANIZED STEEL HEX. HEAD BOLTS, S.A.E. FLAT WASHERS & SHP. LW. IF BASE IS DESIRED ADD "B" TO THE END OF THE CATLOG NO. AND THE FOLLOWING HARDWARE WILL BE SUPPLIED.
BASE MOUNTING: (4) 5/8"-11X1" LONG GALVANIZED STEEL HEX. HEAD BOLTS, S.A.E. FLAT WASHERS & SHP. LW.
7.00" BOLT CIRCLE BASE:
CAP MOUNTING: (4) 3/4"-20X1" LONG GALVANIZED STEEL HEX. HEAD BOLTS, S.A.E. FLAT WASHERS & SHP. LW. IF BASE IS DESIRED ADD "B" TO THE END OF THE CATLOG NO. AND THE FOLLOWING HARDWARE WILL BE SUPPLIED.
BASE MOUNTING: (4) 3/4"-20X1" LONG GALVANIZED STEEL HEX. HEAD BOLTS, S.A.E. FLAT WASHERS & SHP. LW.
- CARE MUST BE TAKEN WHEN INSTALLING A TUBING SIZE SMALLER THAN THE MAXIMUM TO PREVENT EXCESSIVE CONDUCTOR DISTORTION.
- HEX BOLTS CAPTURED TO PREVENT TURNING DURING INSTALLATION.



SUPERSEDES: SKD8907-01

TO ORDER BURNDY® PRODUCTS CALL		BUS SUPPORT	
UNITED STATES 1-800-346-4175 (LONDONDERRY, NH)		ITEM NO: --	CAT. NO: UHKRA (TABLE)
CANADA: 1-800-361-6975 (QUEBEC) 1-800-387-6487 (ALL OTHER PROVINCES)		DRAWN BY: N GOPINATH 08/19/09	CHECKER: J HOSKER 09/22/09
FOR PRODUCT INFO: http://www.burndy.com		DSN APPVL: J HOSKER 09/22/09	MFG APPVL: --
		QA APPVL: C ACKERMAN 09/29/09	MKT APPVL: D JEANNEAU 09/22/09
		PROJ #: --	SCALE: 1:1
		DOCUMENT TYPE: Sales	DRAWING NO: SD036704-01
		REL LEVEL: Released	SHEET 1 OF 1

REV: PEO200