

TYPES T AND YAD

HYLUG™

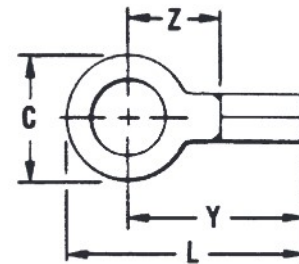
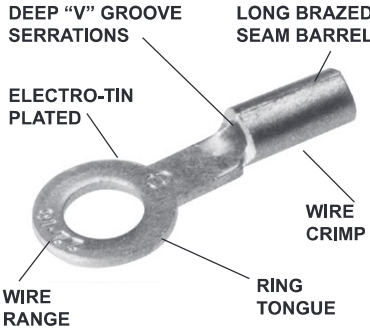
Uninsulated Compression Ring Tongue Terminal

The Type T uninsulated terminals are constructed of pure electrolytic copper. Designed with a long brazed seam barrel, standard neck, deep V groove inner serrations and electro-tin plated. The terminals are ideal for control wiring and other standard duty applications.

The ring tongue provides a secure termination under the screw head that cannot be removed without the complete removal of the screw. Two or more terminals can easily be stacked on a common stud.



NOTE: Field bending straight lugs to achieve an angular connection will void UL Listing / CSA Certifications and BURNDY will not be liable for the connection.



Features & Benefits

- Constructed of pure electrolytic copper
 - ◇ Provides maximum conductivity, low resistance and ductility for excellent crimp forming properties
- Long brazed seam barrel and deep V groove inner serrations
 - ◇ Provides optimum conductivity reliability and holding power after crimping
- Electro-tin plated
 - ◇ Provides durable long-lasting corrosion resistance
- Wire range is clearly marked on terminal
 - ◇ Provides easy identification
- Inspection hole
 - ◇ Provides an easy visual check of wire insertion
- Long neck terminal
 - ◇ Permits easy bending and stacking of several terminals on a common stud

Catalog Number	Wire Range (AWG/kcmil)	Stud Size	Dimensions				Bulk Catalog Number	Installation Tooling	Tape Mounted Catalog Number 2000/Reel	Installation Tooling	Wire Strip Length
			C	L Max.	Y Max.	Z Min.					
T18-4	22 AWG-18 AWG	#3 - #4	0.25	0.65	0.53	0.24	YAD18-4	Non-Ratchet: Y10D, Y10-22 Ratchet: MRE1022B, MR8G98, Y8MRB-1, MR20	YAD18-4M	TFM with DFM6D1 Die	9/32"
T18-6		#4 - #6	0.25	0.65	0.53	0.24	YAD18-6		YAD18-6M		
T18-8		#6 - #8	0.31	0.77	0.61	0.33	YAD18-8		YAD18-8M		
T18-10		#8 - #10	0.31	0.77	0.61	0.33	YAD18-10		YAD18-10M		
T18-14		1/4	0.45	0.96	0.73	0.44	YAD18-14		YAD18-14M		
T18-516		5/16	0.45	0.96	0.73	0.44	YAD18-516		—		
T18-38		3/8	0.53	1.05	0.78	0.49	YAD18-38		—		
T14-4	20 AWG-14 AWG	#3 - #4	0.25	0.67	0.55	0.26	YAD14-4	Non-Ratchet: Y10D, Y10-22 Ratchet: MRE1022B, MR8G98, Y8MRB-1, MR20	—	TFM with DFM5D1 Die	9/32"
T14-6		#4 - #6	0.25	0.67	0.55	0.26	YAD14-6		YAD14-6M		
T14-8		#6 - #8	0.31	0.77	0.61	0.33	YAD14-8		YAD14-8M		
T14-10		#8 - #10	0.31	0.77	0.61	0.33	YAD14-10		YAD14-10M		
T14-14		1/4	0.45	0.96	0.73	0.44	YAD14-14		YAD14-14M		
T14-516		5/16	0.45	0.96	0.73	0.44	YAD14-516		—		
T14-38		3/8	0.53	1.05	0.78	0.49	YAD14-38		YAD14-38M		11/32"
T10-6	12 AWG-10 AWG	#4 - #6	0.37	0.83	0.64	0.29	YAD10-6	—	TFM with DFM4D1 Die	11/32"	
T10-8		#6 - #8	0.37	0.83	0.64	0.29	YAD10-8	YAD10-8M			
T10-10		#8 - #10	0.38	0.83	0.64	0.29	YAD10-10	—			
T10-14		1/4	0.46	0.97	0.74	0.39	YAD10-14	YAD10-14M			
T10-516		5/16	0.53	1.02	0.76	0.41	YAD10-516	YAD10-516M			
T10-38		3/8	0.58	1.08	0.79	0.44	YAD10-38	YAD10-38M			
T10-12*		1/2	0.69	1.21	0.86	0.61	—	—			—

* Not UL Listed or CSA Certified.