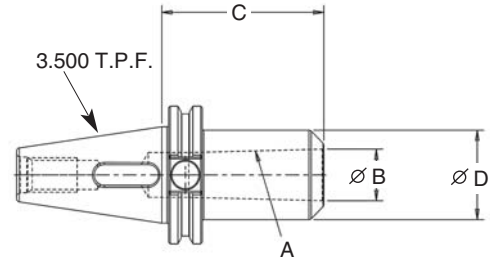


# CAT 40 SHANK

## Briney Toolholder Features

- Ground tapers ranging from AT2 to AT3 for maximum spindle contact
- Concentricity of .0002 or less from the tool shank to bore
- Certified 8620 Material



## MORSE TAPER ADAPTERS

PART NUMBER	A MORSE TAPER	B MOUTH DIAMETER	C GAUGE LENGTH	D BARREL DIAMETER
V40-MT1	1	.475	1.750	1.000
V40-MT2	2	.700	2.440	1.250
V40-MT3	3	.938	3.000	1.620
V40-MT4	4	1.231	3.750	2.000

Order retention knobs separately, specify machine make and model #.

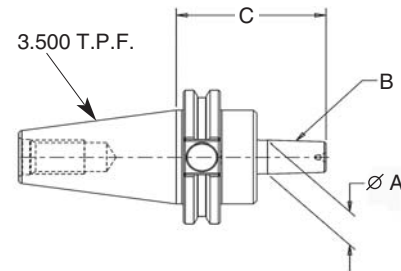
CAT TOOLING

## JACOBS TAPER ADAPTERS

PART NUMBER	A JACOBS TAPER	B J. T. GAUGE DIAMETER	C GAUGE LENGTH
V40-JT2	2	.559	2.438
V40-JT3	3	.811	2.769
V40-JT4	4	1.12	3.218
V40-JT6	6	.676	2.593
V40-JT33	33	.624	2.557

Order retention knobs separately, specify machine make and model #.

Drill chucks sold separately, pages 92 and 93.



## BR/ER COLLET CHUCKS

PART NUMBER	COLLET SERIES	A COLLET RANGE	B O.D. DIA.	C GAUGE LENGTH	D TOOL DEPTH	COLLET NUT	STOP SCREW	COLLET NUT WRENCH
V40BR-11-300	BR11	.019-.276	.63	3.00	4.00	BRCN-11M	5/16-LH	BR11MW
V40BR-16-250	BR16	.019-.406	1.10	2.50	3.00	BRCN-16	7/16-LH	BR16HW
V40BR-16-400	BR16	.019-.406	1.10	5.00	3.00	BRCN-16	7/16-LH	BR16HW
V40BR-16-500	BR16	.019-.406	1.10	5.00	3.00	BRCN-16	7/16-LH	BR16HW
V40BR-20-275	BR20	.039-.512	1.34	2.75	3.00	BRCN-20	9/16-LH	BR20HW
V40BR-20-400	BR20	.039-.512	1.34	4.00	3.00	BRCN-20	9/16-LH	BR20HW
V40BR-20-525	BR20	.039-.512	1.34	5.25	3.00	BRCN-20	9/16-LH	BR20HW
V40BR-25-250	BR25	.039-.630	1.65	2.50	3.00	BRCN-25	M18LH	BR25SW
V40BR-25-400	BR25	.039-.630	1.65	4.00	3.00	BRCN-25	M18LH	BR25SW
V40BR-25-600	BR25	.039-.630	1.65	6.00	3.00	BRCN-25	M18LH	BR25SW
V40BR-32-075	BR32	.079-.787	—	.75	1.89	BRCN-32SW	—	BRSW-32
V40BR-32-238	BR32	.079-.787	1.97	2.38	3.00	BRCN-32	7/8-LH	BR32SW
V40BR-32-300	BR32	.079-.787	1.97	3.00	3.00	BRCN-32	7/8-LH	BR32SW
V40BR-32-400	BR32	.079-.787	1.97	4.00	3.00	BRCN-32	7/8-LH	BR32SW
V40BR-32-600	BR32	.079-.787	1.97	6.00	3.00	BRCN-32	7/8-LH	BR32SW
V40BR-40-315	BR40	.118-1.024	3.07	3.15	5.00	BRCN-40	1-1/8-LH	BR40SW

Order retention knobs separately, specify machine make and model #.

Includes collet nut and standard stop screw. Purchase collets and wrenches separately, pages 82, 86, 87.

**NOTE!** Collet must be assembled into collet nut before inserting tool or assembling onto chuck.

**NOTE!** Do not exceed the following torque recommendations: BR11 - 20 ft/lbs. BR16 - 40 ft/lbs.

BR20 - 65 ft/lbs. BR25 - 65 ft/lbs. BR32 - 80 ft/lbs. BR40 - 90 ft/lbs.

