

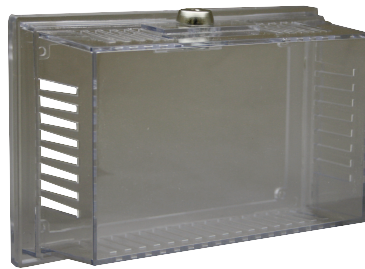
SPECIALTY CONTROLS



CAT. NO.	VOLT	AMPS
LTR1120	120V	22A
LTR208240	208/240V	22A
LTR1277	277V	19A

CATALOG NO.	WR80	WR80EP	WT11A	WT12A	LTR SERIES
Action	Snap Action Switch	Snap Action Switch	Positive snap action switch		Electronic Relays
Type	SPST	SPST	SPDT		Microprocessor base design
Amp Rating			Nema 4X rated		These electronic relays have been designed for silent control of high voltage resistive loads from a low voltage control circuit. Inductive motor loads can also be controlled (120V to 240V only). Compatible with 24V thermostats and accepts analog signal of 0-10V DC.
120V	25A	25A	25A	n/a	
208V	22A	22A	25A		
240V	22A	22A	25A		
277V	18A	18A	22A		
Pilot Duty	Yes 125VA	Yes 125VA	Yes 125VA		The relays can be used with model LT186F01 electronic room sensor, providing proportional and integral control. Also can be tied to building management systems.
Range (°F)	40°F to 90°F	40°F to 90°F	40°F to 110°F		
Differential	+/- 3°F	+/- 3°F	+/- 2 1/2°F		
Features	Rugged design for garages, factories, warehouses and similar commercial and industrial installations. The WR80 can control several heaters by using an external contactor.	This explosion proof room thermostat is suitable for Class I, Group D and Class II, Groups E, F, and G locations.	Nema 4X weatherproof enclosure. The control has a SPDT output and can be used for heating or cooling (ventilation) Multi-positional mounting offers flexibility in new or existing installations.		

SPECIALTY CONTROLS



CATALOG NO.	LTR2240	TC1	M600THW	M600THB
Action	Dual Silent Relay	Enclosure protection for thermostats.	M600THW - White thermostat cover with built-in thermometer. For M600 Series stats.	
Type	2 single pole switches.	Material: Impact resistant polycarbonate. Clear. Dimensions are: 7"L X 4.28"H X 2.75" D	M600THB - Beige thermostat cover with built-in thermometer. For M600 Series stats.	
Watt Rating	Resistive Inductive			
120V	N/A			
208V	25A 1HP, 8.8A			
240V	25A 1HP, 8A			
277V	N/A			
Pilot Duty	Yes 125VA	Thermostat enclosure kits are designed to protect the thermostat. Circulating slots allow airflow for proper operation. Guards are lockable and a key is provided to maintain security.		
Range (°F)	Can be operate in 20 to 140°F			
Differential	Accuracy: Within 1.5°F of setpoint		Minimum 50pcs Allow 4 weeks.	
Features	This dual level temperature relay may be used to operate two separate heating loads by means of a single low voltage thermostat. Relay is mounted in an enclosure.			