

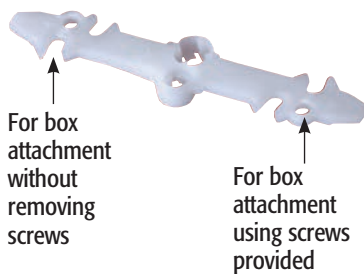
Ceiling Box Cover

Covers unused 3-1/2" and 4" round and octagonal boxes prior to the installation of a fan or fixture. Non-rusting, paintable plastic.



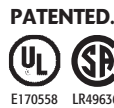
Mounting screws are invisible on the ceiling

Covers Pan Boxes!



CATALOG NUMBER	UPC/DCI/NAED MFG #018997	BOX SIZE	UNIT PKG	STD PKG	DIM A	DIM B	DIM C
CP3540	54090	3-1/2 & 4"	1/Bag	50 Bags	.437	5.390	.812

Two #8-32 x 3/4" flat head screws and bracket are included.

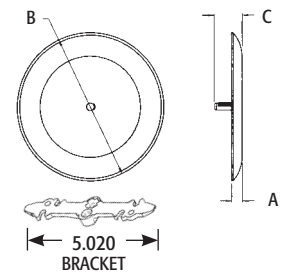


IMPROVED FEATURES

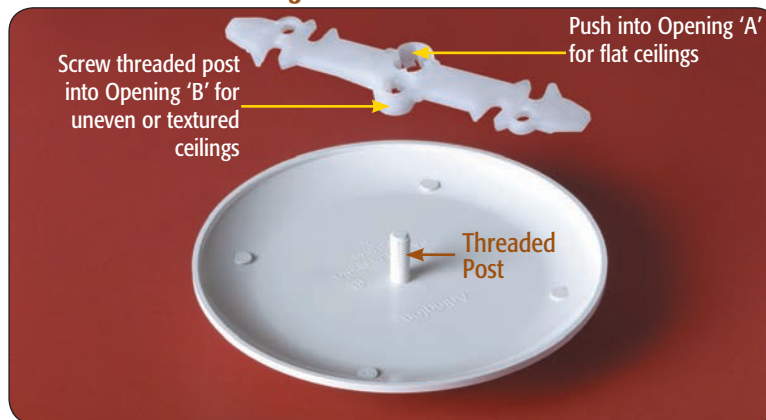
- Deeper cover works with pan boxes without the need to cut the post
- Use #8 screws provided or back out existing screws to accept notched bracket
- Bracket has two separate cover mounting options. Threaded post pushes in, for flat ceilings, or screws on for textured/uneven ceilings. (see photo below)

BENEFITS

- Attractive cover. Screws don't show on the ceiling
- Plastic eliminates the scratches you get with painted metal covers
- Covers poorly cut drywall



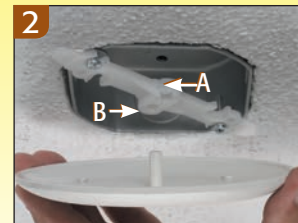
For Flat and Uneven Ceilings...



Installation Instructions



Back the screws out enough to slip the bracket on.



Use the opening in the bracket most suitable for your ceiling condition... 'A' for flat ceilings, push post into opening to seat cover; 'B' for uneven or textured ceilings, screw threaded post into opening until tight.