

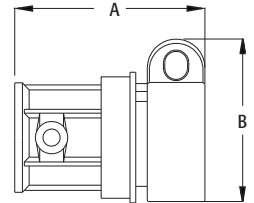
Combination Couplings

EMT to Flex. Zinc die-cast.



CATALOG NUMBER	UPC/DCI/NAED MFG #018997	EMT SIZE	FLEX SIZE	UNIT PKG	STD PKG	DIM A	DIM B	CABLE RANGE
860*	00860	1/2	3/8	50	500	1.300	1.156	.530 - .620
861	00861	1/2	1/2	25	250	1.645	1.363	.850 - .910
862	00862	3/4	3/4	25	100	1.975	1.553	1.100 - 1.100

*CSA only.



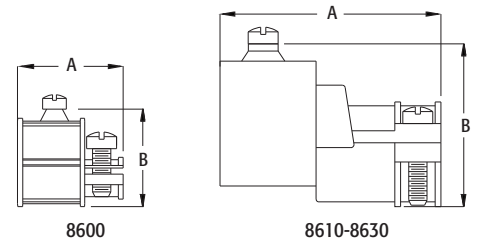
Combination Set-Screw Couplings

EMT set-screw to Flex. Zinc die-cast.



CATALOG NUMBER	UPC/DCI/NAED MFG #018997	EMT SIZE	FLEX SIZE	UNIT PKG	STD PKG	DIM A	DIM B	CABLE RANGE
8600*	08600	1/2	3/8	50	500	1.162	1.090	.530 - .620
8610	08610	1/2	1/2	50	500	1.736	1.170	.850 - .910
8620	08620	3/4	3/4	25	100	1.934	1.360	1.100 - 1.100
8630	08630	1	1	10	40	2.290	1.625	1.255 - 1.375

*CSA only.

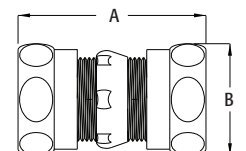


EMT Rain Tight Compression Couplings

UL listed rain tight and concrete tight. Steel. Blue compression nuts help identify these products as rain tight.



CATALOG NUMBER	UPC/DCI/NAED MFG #018997	TRADE SIZE	UNIT PKG	STD PKG	DIM A	DIM B
830RT	82030	1/2	50	50	1.890	1.125
831RT	82031	3/4	50	50	2.052	1.375
832RT	82032	1	25	25	2.219	1.688
833RT	82033	1-1/4	10	10	2.558	2.063
834RT	82034	1-1/2	10	10	2.587	2.250
835RT	82035	2	10	10	2.746	2.750
836RT	83035	2-1/2	12	12	4.207	3.625
837RT	83006	3	12	12	4.500	4.250
838RT	83007	3-1/2	6	6	5.025	4.688
839RT	83008	4	6	6	5.460	5.188



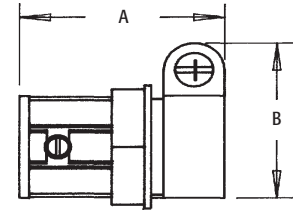
Combination Coupling

EMT to Flex. Zinc die-cast.



CATALOG NUMBER	UPC/DCI/NAED MFG #018997	TRADE SIZE	KO SIZE	UNIT PKG	STD PKG	DIM A	DIM B	CABLE RANGE
860*	00860	1/2	3/8	50	500	1.280	1.140	.530-620
861	00861	1/2	1/2	25	250	1.645	1.340	.850-910
862	00862	3/4	3/4	25	100	1.975	1.535	1.100-1.130

*CSA only.

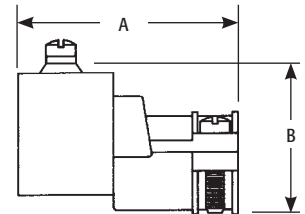


Combination Coupling

EMT set-screw to Flex. Zinc die-cast.



CATALOG NUMBER	UPC/DCI/NAED MFG #018997	TRADE SIZE	KO SIZE	UNIT PKG	STD PKG	DIM A	DIM B	CABLE RANGE
8610	08610	1/2	1/2	50	500	1.736	1.242	.850-910
8620	08620	3/4	3/4	25	100	1.934	1.242	1.100-1.135
8630	08630	1	1	10	40	2.285	1.700	1.255-1.375



Combination Coupling

EMT compression to flexible metal conduit. Zinc die-cast.



CATALOG NUMBER	UPC/DCI/NAED MFG #018997	TRADE SIZE	KO SIZE	UNIT PKG	STD PKG	DIM A	DIM B	DIM C	DIM D
GF860	76860	1/2	3/8	25	100	1.535	.445	.725	1.060
GF861	76861	1/2	1/2	25	250	1.345	.715	.725	1.060
GF862	76862	3/4	3/4	25	250	1.700	.935	.935	1.305
GF863	80173	1	1	25	100	1.895	1.125	1.070	1.625

