



## Non-Metallic Box Extender

Install over a shallow box and allows you to install larger devices: Adds 5/8"



BES1

**New!**

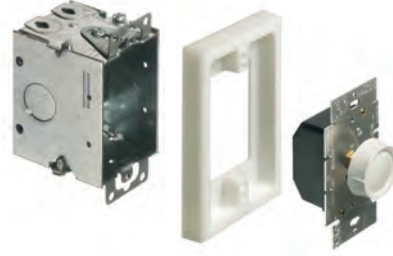
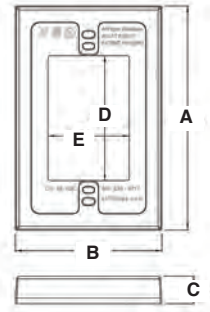
CATALOG NUMBER	UPC/DCI/NAED MFG #01 8997	DESCRIPTION/STYLE	UNIT PKG	STD PKG	DIM A	DIM B	DIM C	DIM D	DIM E
BES1	48976	Single Gang / White	1	10	5.117	3.336	.625	2.850	1.850

Each unit pack includes two installation screws  
PATENT PENDING.



### Features and Benefits

- Adds 5.3 cubic inches to existing box volume
- No need to remove existing shallow box
- Allows you to install larger devices such as GFCI's in shallow boxes
- Finishes with any standard or mid-size wall plate
- Paintable



## Non-Metallic Box Extender

Install over a shallow box and allows you to install larger devices: Adds 5/8"



BES2



BES2C

**New!**

CATALOG NUMBER	UPC/DCI/NAED MFG #01 8997	DESCRIPTION/STYLE	UNIT PKG	STD PKG	DIM A	DIM B	DIM C
BES2	48977	White End Connector	1	10	5.117	2.574	.625
BES2C	48979	White Coupler Connector	1	25	1.127	1.812	.525

Each unit pack includes four installation screws  
PATENT PENDING.



### Features and Benefits

- BES2 adds 10.5 cubic inches to existing box volume
- BES2C pair adds an additional gang and 3.5 cubic inches
- No need to remove existing shallow box
- Allows you to install larger devices such as GFCI's in shallow boxes
- Finishes with any standard or mid-size wall plate
- Paintable

