

Conduit Outlet Boxes and Bodies: Malleable Iron or Aluminum; Explosionproof, Dust-Ignitionproof

UNILETS® for use with Threaded Metal Conduit.

- Excellent for use in wiring of motors, panelboards, circuit breakers, entrances to buildings, etc.
- Body and cover have ground mating surfaces to meet classified-location requirements.
- Smooth, rounded integral bushing in each hub type box protects conductor insulation.

Features: ELBY

- Serve as pulling fittings.
- Make 90° bends in conduit.
- Threaded cover opening permits easy access for pulling conductors thru hubs.
- Easily removable threaded cover.

Features: CPU

- ⑤ Universal design with four threaded universal hubs and three close-up plugs.
- Serve as mounting outlets for lighting fixtures when used with hub cover.
- Wide, accurately ground explosion-proof mating surfaces.
- Smooth, rounded integral bushing in each hub type box protects conductor insulation.

Features: GRU and GRUE

- ⑥ Universal design with five threaded universal hubs and three close-up plugs.
- Copper-free aluminum body and cover provide resistance to corrosive atmospheres.
- Function as sealing fittings when used with sealing covers (see NEC for restrictions).
- GRU has internally threaded body and externally threaded cover. GRUE has externally threaded body and internally threaded overlapping cover.
- Standard O-Rings provide raintight fit. NEMA 3,4.
- Covers have pry notches for bar or wrench.
- Smooth, rounded integral bushing in each hub type box protects conductor insulation.

Features: GRJS

- ⑦ Universal design with five threaded openings and three close-up plugs.
- Compact round box for use where space is limited.
- Serve as mounting means for lighting fixtures when used with hub cover.

- Function as sealing fittings when used with sealing covers (see NEC for restrictions).
- Internally threaded body with externally threaded cover.
- Smooth, rounded integral bushing in each hub type box protects conductor insulation.

Features: GRJ

- ⑧ Small, round conduit outlet boxes.
- Function as sealing fittings when used with sealing covers (see NEC for restrictions).
- Externally threaded body with internally threaded cover.
- Smooth, rounded integral bushing in each hub type box protects conductor insulation.

Features: ER

- ⑨ Compact, rectangular conduit outlet boxes are ideal in classified locations where space is limited.
- Six different hub arrangements.
- Ground surface contact between body and cover assures a flame-tight joint.
- Smooth, rounded integral bushing in each hub type box protects conductor insulation.

Features: GRUO and GRUJ

- Threaded universal hubs for wiring flexibility.
- ⑩ GRUO has eight hubs.
- ⑪ GRUJ offers up to eleven hubs.
- Ideally suited for use where space is limited, such as for gasoline pumps.
- Function as sealing fittings when used with sealing cover (see NEC for restrictions).
- Externally threaded body with internally threaded covers.
- Smooth, rounded integral bushing in each hub type box protects conductor insulation.

Features: GRU (Union Hubs)

- ⑫ Union hubs permit easy wiring.
- Function as sealing fittings when used with sealing covers (see NEC for restrictions).
- Externally threaded body with internally threaded cover.
- Smooth, rounded integral bushing in each hub type box protects conductor insulation.

Features: GRSS and GRSSA

- ⑬ Multiple hubs permit flexibility.
- Copper-free aluminum body and cover provide superior corrosion resistance.
- Internal ground screw standard.

Features: GU

- ⑭ Designed for Class I, Groups B,C,D; Class II, Groups E,F,G; and Class III.
- Externally threaded body with internally threaded cover.
- Smooth, rounded integral bushing in each hub type box protects conductor insulation.
- Internal ground screw standard.

Standard Materials

- *GR, GRF, GRH, and GRJS*: Malleable iron bodies with aluminum covers.
- *Aluminum GR Series*: Copper-free body and cover.
- *GU, GRUO, GRUJ, GRU (Union), GRJ, CPU, ER, ELBD and ELBY*: Malleable iron bodies and covers.
- *GRU, GRUE, and GRSS*: Aluminum copper-free bodies and covers.
- *GRG O-Rings*: Neoprene.

Standard Finishes

- *Malleable iron bodies and covers (except ELBY)* triple-coat—(1)zinc electroplate, (2) dichromate, and (3) epoxy powder coat.
- *Aluminum bodies and covers*: epoxy powder coat.
- *ELBY malleable iron body and cover*: zinc electroplate and clear chromate.

Options

- PVC available—consult factory.





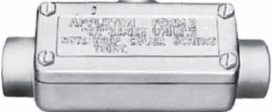

Compliances

- UL Standard 886.
- Federal Spec. W-C-586B.
- Appleton malleable iron products conform to ASTM A47-77, Grade 32510, which has the following properties: tensile strength, 50,000 psi; yield, 32,000 psi; and elongation, 10%.
- Appleton aluminum products are produced from a high strength copper-free (4/10 of 1% max.) alloy.
- Suitable for Class I, Div. 1 & 2, if installed in compliance with NEC 501-4(a)(b) and for Class II, Div. 1 & 2, if in compliance with NEC 502-4(a)(b).
- *GR Series*: CSA -LR25875-30.

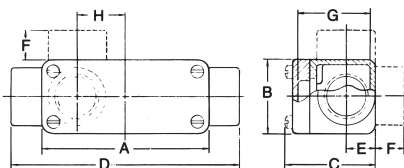
Class I, Div. 1 and 2
Groups D
Class II, Div. 1 and 2
Groups E,F,G
Class III

ER Conduit Outlet Boxes: Explosionproof, Dust-Ignitionproof

UNILETS® for use with Threaded Metal Conduit.

| | Box Type | Conduit Size (Inches) | Catalog Number Malleable Iron |
|---|----------|-----------------------|----------------------------------|
|  | ERC | 1/2 3/4 | ERC50 ERC75 |
|  | ERLB | 1/2 3/4 | ERLB50 ERLB75 |
|  | ERLL | 1/2 3/4 | ERLL50 ERLL75 |
|  | ERLR | 1/2 3/4 | ERLR50 ERLR75 |
|  | ERT | 1/2 3/4 | ERT50 ERT75 |
|  | ERTB | 1/2 3/4 | ERTB50 ERTB75 |

ER Dimensions



Dimensions in Inches

| Hub Size (In.) | A | B | C | D | E | F | G | H |
|----------------|------|------|------|------|-----|-----|------|------|
| 1/2 | 3.69 | 1.50 | 2.00 | 5.00 | .56 | .69 | 1.50 | 1.06 |
| 3/4 | 4.00 | 1.75 | 2.13 | 5.44 | .69 | .69 | 1.75 | 1.13 |

Dimensions in Centimeters

| | | | | | | | | |
|-----|------|-----|-----|------|-----|-----|-----|-----|
| 1/2 | 9.4 | 3.8 | 5.1 | 12.7 | 1.4 | 1.8 | 3.8 | 2.7 |
| 3/4 | 10.2 | 4.5 | 5.4 | 13.8 | 1.8 | 1.8 | 4.5 | 2.9 |

For cubic inches information, see page J-19

*If bigger sizes needed, see GR Series on page J-4

Wiring Capacity: Explosionproof Conduit Outlet Boxes



Volume in Cubic Inches and Cubic Centimeters

Wiring Capacity

| Type | Size | Vol./cu. in. | Vol./cu. cm |
|------------------|-------------------|--------------|-------------|
| CPU | Form 20 | 21.0 | 344.1 |
| ER | 1/2" | 4.8 | 78.7 |
| ER | 3/4" | 7.3 | 119.3 |
| GR | Form 1 | 18.0 | 295.0 |
| GR | Form 2 | 31.0 | 508.0 |
| GR | Form 3 (1-1/2") | 72.0 | 1179.9 |
| GR | Form 3 (2") | 76.0 | 1245.4 |
| GRF | All | 18.0 | 295.0 |
| GRH | All | 13.8 | 226.2 |
| GRJ | All | 7.3 | 119.3 |
| GRJS | All | 12.5 | 204.8 |
| GRK (Canopy)- | -50C, -75C, -100C | 16.0 | 262.2 |
| GRK (Dome) | 1DC | 6.0 | 98.3 |
| GRU (Union Hubs) | 1/2", 3/4" | 19.0 | 311.4 |
| GRU (Universal) | 1/2", 3/4" | 13.5 | 221.2 |
| | 1" | 17.5 | 286.8 |
| GRUE | 1/2", 3/4" | 15.3 | 250.7 |
| | 1" | 18.5 | 303.2 |
| GRUJ | All | 25.0 | 409.7 |
| GRUO | All | 25.0 | 409.7 |
| GRSS | All | 29.0 | 475.2 |
| GRSSA | All | 29.0 | 475.2 |
| GU | All | 19.0 | 311.4 |

ELBD 90° Pulling Unilets

| Size | 1/2 | 3/4 | 1 | 1-1/4 | 1-1/2 | 2 | 2-1/2 | 3 | 3-1/2 | 4 |
|--------------------------------------|-------|-------|-------|-------|--------|--------|--------|--------|--------|--------|
| Capacity in Cubic Inches | | | | | | | | | | |
| ELBD | 7.0 | 7.0 | 25.0 | 25.0 | 69.0 | 69.0 | 240.0 | 240.0 | 540.0 | 540.0 |
| Capacity in Cubic Centimeters | | | | | | | | | | |
| ELBD | 114.7 | 114.7 | 409.7 | 409.7 | 1130.7 | 1130.7 | 3932.9 | 3932.9 | 8849.0 | 8849.0 |

